

The magnetic connectivity of coronal shocks to the visible solar surface during long-duration γ -ray events

I. Plotnikov^{1,2}, A .P. Rouillard^{1,2}, and G.H. Share^{3,4}

¹ Universite de Toulouse; UPS-OMP; IRAP; Toulouse, France

² CNRS; IRAP; 9 Av. colonel Roche, BP 44346, F-31028 Toulouse cedex 4, France

³ Department of Astronomy, University of Maryland, College Park, MD 20742, USA

⁴ National Observatory of Athens, P.O. Box 20048, Thissio, 11810 - Athens, Greece
Contact: e-mail: illya.plotnikov@irap.omp.eu

manuscript version: Thursday 23rd March, 2017; 00:41

ABSTRACT

Context. Solar γ ray events measured near Earth can last several hours during so-called Long Duration Gamma Ray Flares (LDGRFs). LDGRFs suggest that a particle-acceleration mechanism operates over many hours to produce energetic protons that stream continually towards the solar surface. Coronal shocks, driven by the expansion of Coronal Mass Ejections (CMEs), could be the source of these energetic particles. For this hypothesis to work, the shock must be magnetically connected to the solar disk visible from Earth in order for particles accelerated at the shock to be channelled towards and impact the visible chromosphere. LDGRFs that occur when solar eruptions erupt on the far side of the Sun and during which the flare loops and footpoints are not visible from Earth, provide favourable case studies to isolate the possible role of shocks driven by CMEs in producing the LDGRFs.

Aims. In this paper, we investigate if the spatial and temporal evolution of the coronal shocks, inferred from stereoscopic observations, could be the accelerators of the particles producing the LDGRFs.

Methods. We analyse three CMEs that (1) erupted behind the solar limb viewed from Earth, (2) were associated with the early formation of coronal shocks measured by ground-based radio spectrographs, and (3) were associated with γ -ray events measured by the *Fermi*-Large Area Telescope (LAT) instrument. A 3D triangulation technique, based on remote-sensing observations is employed to model the expansion of these three CME shocks from above the solar surface to the upper corona. Coupling the expansion model to different models of the coronal magnetic field allows us to derive the time-dependent distribution of shock Mach numbers and the magnetic connection of particles produced by the shock to the solar surface visible from Earth.

Results. For all events, the reconstructed shock front was magnetically connected to the visible solar surface after the start of the flare and just before the onset of the > 100 MeV gamma-ray emission observed by *Fermi*-LAT γ -ray emission. The shock surface also exhibits supercritical Mach numbers required for significant particle energisation. The strongest gamma-ray emissions occur when the flanks of the shock exhibiting a quasi-perpendicular geometry are connected to the visible surface.

Conclusions. This study provides further evidence that the high-energy protons producing the long duration high-energy γ -ray emission has the same CME shock origin as the Solar Energetic Particles observed in interplanetary space.

Key words. Sun: flares – Sun: X-rays, gamma rays – Sun: coronal mass ejections (CMEs) - Sun: magnetic fields

1. Introduction

Observations of γ -rays and neutrons during flares provide the only information on the properties of very energetic ions accelerated in the corona and impacting the solar atmosphere (Vilmer et al., 2011). Energetic ions interacting with the solar atmosphere produce a wealth of γ -ray emissions. A γ -ray line spectrum is produced through interactions of ions in the range 1 – 100 MeV/nucleon and consists of several nuclear de-excitation lines, neutron capture and positron annihilation lines. If more energetic ions are present, over a few hundred MeV/nucleon, nuclear interactions with the ambient medium produce secondary pions whose decay products lead to a broad-band continuum detectable at photon energies above 10 MeV. The first γ -ray line images of a solar flare were obtained with the Reuven Ramaty High Energy Solar Spectroscopic Imager (*RHESSI*) (Lin et al., 2002) for the X4.8 flare of 2002 July 23 (Hurford et al., 2003).

For some of the events, high-energy emission has been observed for hours after the impulsive phase of the flare, revealing that high energy ions must be continuously accelerated or stored for tens of minutes to hours (e.g., Kanbach et al., 1993).

These high-energy events were given the name Long Duration Gamma Ray Flares (LDGRFs; Ryan, 2000). The LDGRFs occurring for several hours challenge the flare hypothesis since emissions can outlive the solar flares and trapping of >100 MeV protons on coronal loops seems theoretically unlikely. This class of extended γ -ray flares often show pion-decay γ radiation over tens of minutes to hours after the impulsive phase while other common flare emissions (e.g., X-rays) are absent or greatly diminished.

The hadronic processes can result from the interaction of very energetic protons with the collisional chromospheric region situated between the photosphere and the weakly collisional corona where efficient particle acceleration occurs in either solar flares or coronal shocks. For this interpretation, γ -ray events that are detected near Earth require that energetic protons have propagated and impacted the chromospheric regions visible from the Earth (the so-called ‘visible disk’). Indeed, an additional constraint on the size of the accelerator and on the particle transport is imposed by the detection of LDGRF from the events launched being-the-limb. For instance an accelerator

limited to the vicinity of the flare loop top is expected to influence a smaller region of the corona than a shock wave generated along a CME front.

With the launch of the *Fermi* satellite many more long-duration >100 MeV events have been detected (Ackermann et al., 2012) associated with much weaker X-ray flares. *Fermi*/Large Area Telescope (LAT) is a pair-conversion telescope (Atwood et al., 2009) that is sensitive to γ rays from about 20 MeV to 300 GeV. In the standard *Fermi* sky-survey mode the detector axis rocks $\pm 50^\circ$ from the zenith each orbit; therefore, at most times during the year the Sun can be observed for ~ 20 -40 min every two orbits. The LAT's large aperture (2.4 sr) and effective area provide the capability to sensitively monitor the Sun with a duty cycle of 15-20%. Ackermann et al. (2012) presented a detailed description of the solar flare analysis procedures and instrument response functions for the telemetered LAT data. A comprehensive analysis of LAT solar events is provided in a paper in preparation (Share et al. 2016). In the present study, we use the publicly available Pass7 and Pass8 source-class data. The source-class data are used for most celestial source analyses where long-time exposures are required. Our method for analyzing the LAT data is best described as a 'light bucket' approach and is less sophisticated and faster than the Maximum Likelihood approach used by Ackermann et al. (2014); Ajello et al. (2014), but it is almost as sensitive for detecting long-duration high-energy solar γ -ray events. In this approach we reduced the γ -ray background from the Earth's atmosphere by restricting the allowable events to those with zenith angles $<100^\circ$. We also restricted our studies to γ rays with energies >100 MeV. With these restrictions we accumulated all photons having measured locations within about 10° of the Sun, thus basically a 'light bucket'. We note that about 95% of all 200 MeV solar γ rays will have measured locations within this 10° region of interest (ROI).

Pesce-Rollins et al. (2015a,b) and Ackermann et al. (2017) has identified three γ -ray events observed by LAT that occurred during behind-the-limb flare events. Because 2014 September 01 occurred well beyond the limb (36 degrees), the observed γ -ray emission could not have come from the flare footprints or loop top. Thus one needs to consider an acceleration process that can explain such observation. Acceleration at a coronal shock is a natural candidate for broadly distributed particle acceleration. It was proposed by Cliver et al. (1993) that γ -ray events during solar events launched behind-the-limb are the consequence of particles acceleration by CME-driven coronal shocks in conjunction with their precipitation on the visible disk. The interaction of these particles with the dense solar plasma would then produce at least a part of the observed γ -ray flux.

During its propagation out into the high corona and further into the interplanetary space, the CME shock transfers a part of its kinetic energy to energetic particles, typically about 10% (Mewaldt et al., 2008). These particles can eventually reach by number (flux greater than 10 particle $\text{cm}^{-2}\text{s}^{-1}\text{sr}^{-1}$) and energy (≥ 10 MeV) the levels required to be identified as a Solar Energetic Particle Event (SEP) at 1 AU (Gopalswamy, 2003). It has been argued that most gradual SEP events observed in the interplanetary space are accelerated at the shock driven by the CME (Reames, 1999). The highest particle energisation (beyond GeV energies) occurs during the acceleration phase of the shock in the corona when the shock can reach speeds up to 3000 km/s and high Alfvénic Mach numbers $M_A \gg 1$, necessary for the efficient shock acceleration (e.g., Blandford & Eichler, 1987; Marcowith et al., 2016). In the extreme example of astrophysical shocks where M_A reaches very high values above 10^3 (i.e. shocks of Supernova Remnants) there is evidence that protons

are accelerated up to the knee of the cosmic ray spectrum, i.e. 10^{15} eV (Morlino & Caprioli, 2012). In the coronal shocks the Mach numbers are more modest and probably do not exceed ~ 20 (Rouillard et al., 2016) and the available acceleration time is bound by the shock transit time of several hours to days. When the shock reaches the upper corona it decelerates and passes through more tenuous regions of the corona, diminishing the number and the maximum energy of the accelerated particles. On theoretical grounds, it was demonstrated by Ng & Reames (2008) that a 2500 km/s shock in a typical coronal conditions can accelerate protons up to \sim GeV energies in 10 minutes. We also note that the shock acceleration scenario is supported by in situ energetic particle observations (albeit at large heliocentric distances) when the shock of a CME or a Corotating Interaction Region impacts an observing spacecraft.

The SEPs measured near 1 AU could be the interplanetary counterpart, i.e. the anti-Sunward rather than the Sunward propagating particles, of the LDGRFs. Therefore the flux and the maximal energy of SEPs at 1 AU (discussed in the section A.1) could provide additional clues on the acceleration efficiency of the candidate accelerator and may also provide an estimate of the energetic particle flux precipitating on the solar surface. For this purpose we would need to know the properties of the shock interaction with the magnetic fields going and those returning to the Sun. Because the solar corona is not yet accessible to in situ measurements, we rely here on remote sensing and high-energy radiation diagnostics to infer the conditions in which particles are accelerated.

In this study we concentrate on deriving the shock properties of three far-side CME events that were associated with γ -ray emissions with very different intensities and durations. Section 2 presents an observational overview and analysis of the three events measured as radio, visible, EUV and high-energy X/ γ -ray radiation. The measurements of energetic particles in-situ by distant spacecraft are reviewed in section 2. We use a combination of reconstruction techniques and numerical models to derive the time-dependent properties of the expanding shock wave (velocity, Mach number and geometry) in section 3. In section 4 we test the idea that long-duration γ -ray emissions result from energetic particles produced by the coronal shock region that is magnetically connected with the visible solar disk. We discuss the main findings of the study and draw conclusions in section 6.

2. Observations

The three far-side eruptions on 2013 October 11, 2014 January 06 and 2014 September 01 were observed by a number of ground- and space-based observatories. We first discuss the observations of the flares and the time-extended γ -ray measurements. In the next section we discuss the CME observations, the evolution of the shock front, and magnetic connections to spacecraft that measure the SEPs discussed in the last section.

2.1. Overview of flares and γ -ray observations

In Figures 1-3 we plot the 'light-bucket' flux time histories of >100 MeV γ rays observed by LAT in the three events discussed in this paper. In the main figure, we plot the fluxes within 10 degrees of the Sun in the hours around the flare. Discrete LAT observing intervals with significant solar exposure are typically about 20-40 min in duration and occur every other orbit. The background fluxes are predominately comprised of Galactic, extra-galactic, and quiescent solar photons. Details of these and

twenty-six other sustained-emission γ -ray events observed by Fermi are discussed in (Share et al. 2017, to be submitted).

2.1.1. 2013 October 11

On 2013 October 11 at 07:01 UT a flare occurred from the Active Region (AR) located at N21E106 position and was observed in soft X-rays by the Geostationary Operational Environmental Satellite Network (*GOES*) and the Mercury Surface, Space Environment, Geochemistry and Ranging (*MESSENGER*). In addition, a wealth of EUV, Visible, Radio, X-ray and γ -ray radiations were observed by the the Solar-Terrestrial Relations Observatory (*STEREO*; Kaiser et al., 2008), the Solar and Heliospheric Observatory (*SoHO*) and the Solar Dynamics Observatory (*SDO*; Lemen et al., 2012), *RHESSI*, *GOES* and Fermi spacecraft (see e.g. Pesce-Rollins et al., 2015a; Ackermann et al., 2017). The AR was 10 degrees behind the East limb viewed from Earth at the time of the flare. A drifting metric Radio type II was measured between 07:10 and 07:20 UT by the Culgoora spectrograph with a drift speed of 924 km/s, close to the derived CME/shock speeds measured in Figure 6(d) during that time interval, as will be shown later in this work.

As the flare was located beyond the East limb of the Sun, the soft X-ray emission recorded by *GOES* came from the upper corona. The emission from this vantage point lasted ~ 44 min and is shown by the dashed vertical lines in Figure 1, and by the dashed curve in its inset. The Solar Assembly for X-rays (SAX) instrument on *MESSENGER* (Schlemm et al., 2007) (we thank Brian Dennis and Kim Tolbert for providing these data) directly observed soft X-rays from the flare site (red dots) and showed that the 1–4 keV emission from the flare peaked more rapidly than that observed by *GOES*. The onset of the CME occurred about 7 min after the start of the soft X-ray emission and about 3 min before Type II metric radio emission was detected. The green dots represent the derivative of the 1–4 keV emission observed by SAX and provide a surrogate for the time profile of hard X-ray emission from the flare site. Hard X-ray emission from the flare began $\sim 07:00$ UT and peaked ~ 7 min before the peak in soft X-rays. *Fermi*/GBM observed a precipitous rise in 50–100 keV X-ray emission about 07:08 UT that appears to reflect the time that flare hard X-rays in the corona became visible above the limb of the Sun, as viewed from Earth. *RHESSI* hard X-ray images up to 50 keV indicate that the source of the emission was above the Sun's limb (Pesce-Rollins et al., 2015a). We fit the background-subtracted hard X-ray spectrum observed from 15–200 keV between 07:09 and 07:12 UT; the emission appears to extend up to ~ 100 keV and can be fit equally well by a spectrum of electrons with power-law index -4.8 interacting in a thick-target or a spectrum with index -3 interacting in a thin target.

LAT had good solar exposures every other orbit on October 11. The exposure from 06:58–0740 UT captured all of the time in which hard X-ray emission was observed. As shown in the Figure, emission >100 MeV was only observed during this first orbit. There was no evidence for emission in the next exposure three hours later, 10:16–10:50 UT. The source-class data plotted at 1-min resolution in the inset reveal an increase in >100 MeV emission beginning at 07:15 UT that peaks in 5 min and falls back to background by 07:40 UT. This is one of the shortest durations of the LDGRFs emission events observed to date by *Fermi*. The centroid of the >100 MeV emission by LAT is consistent with a location near the East limb of the Sun at N03E62 with a 1σ range in longitude from E39 to just above the Eastern limb (Pesce-Rollins et al., 2015a). The background-subtracted γ -

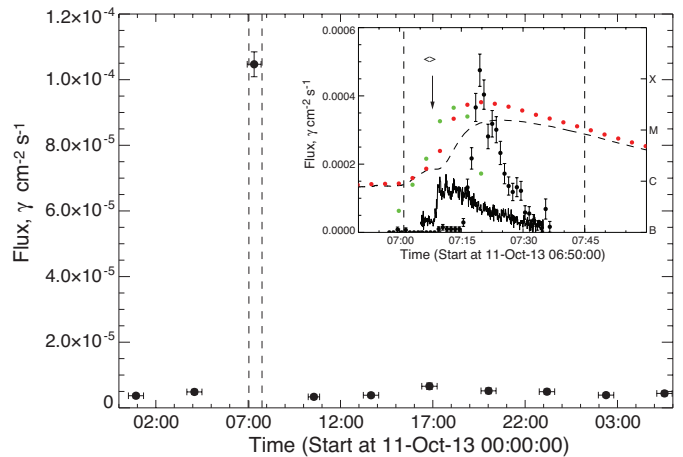


Fig. 1. Time history of the >100 MeV flux from ≤ 10 degrees of the Sun revealing the 2013 October 11 LAT event. Vertical dashed lines show the *GOES* start and end times. The inset shows 1-min accumulation LAT flux data points and arbitrarily scaled 50–100 keV count rates observed by *Fermi* /GBM. The dashed curve shows the *GOES* 1 – 8 Å profile (scale on right ordinate) and the $\langle - - \rangle$ symbol the estimated time of the CME onset from the CDAW catalog. The vertical solid arrow depicts our estimate of the CME onset from inspection of *SDO*/AIA images; the Type II radio emission began about 2 min later. The red dots follow the 1–4 keV time profile observed by Solar Assembly for X-rays (SAX) instrument on *MESSENGER* (Schlemm et al., 2007) that directly observed the flare. The derivative of the 1–4 keV emission is shown by the green dots.

ray spectrum from 07:14–07:30 UT is consistent with emission from pion-decay produced by a proton spectrum >300 MeV following a differential power-law with an index -3.7 ± 0.2 , with no evidence for spectral variation during the rising and falling phases. A better fit might be achieved with a proton spectrum rolling over at energies above 500 MeV. These measurements indicate that the protons producing the gamma-ray emission interacted deep in the solar atmosphere on the visible disk as viewed from Earth.

2.1.2. 2014 January 06 event

On 2014 January 06 a C2.2 flare occurred at about 07:30 UT (Thakur et al., 2014) from AR located at S8W110 and a large filament eruption was observed at 07:44 UT. The *GOES* soft X-ray flare class does not represent its real magnitude because the AR was ~ 20 degrees behind the solar limb. Metric Type II emission was observed between 07:45 and 08:05 UT by the Learmonth spectrograph, but no speed could be derived using the spectrograph. Type III radio emission started at 07:45 UT as seen by Waves and S-waves wave receivers onboard both *STEREO* and *Wind* spacecraft. The γ -ray emission from this behind-the-limb flare was reported by Pesce-Rollins et al. (2015b); Ackermann et al. (2017). However, as can be seen in Figure 2, this excess between 07:55 and 08:30 UT was not significant using our 'light bucket' analysis and did not meet our criteria for detection above background. We find no evidence for variation in the >100 MeV flux in that time. As we shall see this solar event was associated with energetic particles measured near Earth and deserves a thorough analysis in order to understand why gamma-ray fluxes were so weak.

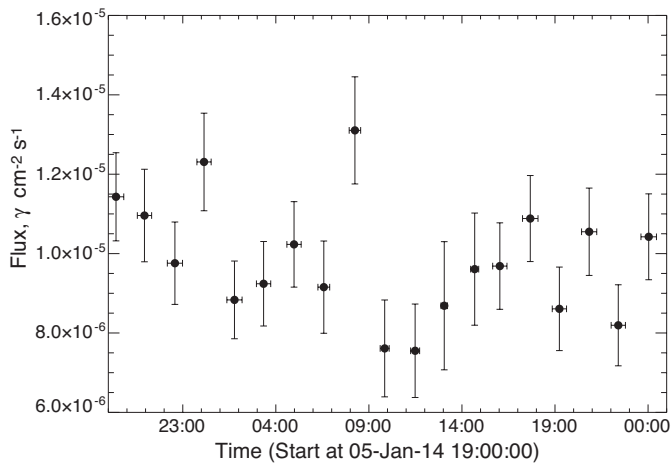


Fig. 2. Time history of the >100 MeV flux from $\leq 10^\circ$ of the Sun around the time of the reported >100 MeV event on 2014 January 6.

2.1.3. 2014 September 01 event

On 2014 September 01 a solar flare occurred at about 10:54 UT and lasted 40 minutes as deduced from the on-disk observations made by the MESSENGER/SAX soft X-ray monitor. The AR was located at N14E126 corresponding to 36 degrees behind the East limb viewed from Earth. Metric emission was observed with a drift speed of 2079 km/s by the Nançay *ORFEES* spectrograph between 11:00 and 11:50 UT (Pesce-Rollins et al., 2015b). In addition the Nançay radio-heliograph imaged the type II burst from 11:00 UT in a region situated near the forming CME. A type III burst was detected at 11:02 \pm 00:02 UT by *STEREO* and *Wind* radio and plasma wave receivers.

The flare associated with this event occurred behind the solar limb at about E126. At this location the coronal region above the flare was not visible at Earth and no soft X-ray emission was observed by *GOES*. However, the flare was observed by the Solar Assembly for X-rays (SAX) instrument on *MESSENGER* (Schlemm et al., 2007). The soft X-ray time profile observed by SAX is plotted as the dashed curve in the inset of Figure 3; this emission had a duration of about 40 min. From *SDO* 193Å, 211Å images, we estimate that the onset of the associated CME occurred about 10:57 UT, at the rise of the inferred flare hard X-ray emission. The latter was computed by taking the derivative of the SAX soft X-ray time profile plotted as a solid curve in the inset.

Fermi/LAT had good solar exposures every other orbit and exposures about four times smaller in the intervening orbits. Such a 25% exposure occurred during the behind-the-limb flare from about 11:06–11:20 UT when the Sun was at a large angle with respect to the LAT telescope axis. Source-class LAT data could be used to study >100 MeV γ -ray emission because the intense hard X-ray emission from the flare did not reach *Fermi*. At these large solar viewing angles, the detector response is small and not accurately determined. There were also two good exposures 12:26–12:58 and 15:36–16:08 UT during which LAT had significantly higher sensitivity to search for delayed high-energy emission. The >100 MeV flux plotted in the main figure just after the flare was one of the largest observed by LAT during its 8-year Mission. The hourly fluxes are plotted logarithmically in order to reveal the sustained emission that lasted about 3 hours. In the inset we plot >100 MeV fluxes (individual data points) derived from the Pass 8 source-class data at 1-min resolution along

with arbitrary 100–300 keV rates (solid data curve) observed by GBM. Both the gamma-ray and 100–300 keV X-ray emissions, as viewed from Earth, appear to rise at $\sim 11:04$ UT, about 7 min after the onset of the hard X-ray emission observed from the flare as viewed by *MESSENGER*. The hard X-rays observed by GBM peaked by 11:08 UT and fell exponentially while the >100 MeV γ -ray flux peaked about 5 min later and appeared to fall as rapidly as it increased. The sustained γ -ray emission observed between 12:26 and 12:58 UT is likely to be the tail of this earlier post-impulsive phase emission.

We have fit the background-subtracted >100 MeV γ -ray data with a pion-decay spectrum produced by >300 MeV proton, following a differential power-law spectrum, and interacting in a thick target at a heliocentric angle of 85° . Our fits suggest that the spectrum hardened during the duration of the event with spectral indices of -4.25 ± 0.15 , -3.85 ± 0.1 , and -3.45 ± 0.35 , at 11:06–11:12, 11:12–11:20, 12:26–12:58 UT, respectively. We have searched for the presence of the 2.223 MeV neutron capture line in the GBM BGO spectrum between 11:04 and 11:30 UT and set a 95% confidence upper limit of $0.016 \text{ cm}^{-2} \text{ s}^{-1}$ on its flux. Comparing the >100 MeV γ -ray fluence with the upper limit on the 2.223 MeV line fluence, we estimate that the proton power-law spectral index between 30 and 300 MeV was harder than -3.4 ; this was estimated assuming that the protons interacted at a heliocentric angle of 85° . For smaller heliocentric angles the index would be even harder. This suggests that the spectrum of protons producing the pion-decay emission steepened above 300 MeV.

The NaI detectors on GBM observed a hard X-ray spectrum up to at least 1 MeV. Our fits to the 20–900 keV spectrum between 11:06 and 11:16 UT indicate that the hard X-rays were produced by a power-law electron spectrum with index -3.1 and low-energy cutoff of ~ 90 keV for a thick target model with a 5% confidence in the quality of the fit. With this high low-energy cutoff in the electron energy we would not expect to observe significant soft X-ray emission from chromospheric evaporation on the visible disk and such emission was not detected by *GOES*. The fit to the spectrum for a thin target model is significantly worse (confidence $< 10^{-6}$ %) than for a thick target. There is no evidence for variation of the electron spectrum over the event. We also fit the GBM BGO spectrum up to 40 MeV with an electron spectrum having a power-law index of -3.1 interacting in a thick target. Thus the results indicate that the bremsstrahlung originated from a single spectrum of electrons with a high-low energy cutoff and power-law index of ~ 3.1 up to tens of MeV interacting in a thick target.

The fact that both the protons producing the γ -ray emission and the electrons producing bremsstrahlung up to about 40 MeV interacted in a thick target on the visible disk and that both emissions commenced at the same time, suggests that they had a common origin. In the next sections, we will investigate whether this common origin could be the CME shock.

2.2. Solar energetic particles measured in situ

Strong solar energetic particles were also measured in-situ at widely separated vantage points during the three gamma ray events, this includes measurements from *STEREO*, spacecraft situated along the Sun-Earth line (*SoHO*, *Wind*, the Advanced Composition Explorer, *ACE*) and at Mars. They provide relevant diagnostics of the particle acceleration in the low corona that are exploited later in this article to reach a comprehensive interpreta-

Waveband or Instrument	2013 Oct 11	2014 06 Jan	2014 Sep 01
<i>EM emission:</i>			
Radio type II	07 : 10	07 : 45	11 : 00
Radio type III	07 : 15	07 : 45	11 : 00
Soft X-ray	07 : 01	07 : 42	10 : 54
Hard X-ray	06 : 58		10 : 57
Fermi LAT γ -ray (> 100 MeV)	07 : 15	<i>Too Weak</i>	11 : 04
<hr/>			
Shock connectivity to vis. disk	07 : 10	07 : 45	11 : 05
<hr/>			
<i>SEP electrons (1 AU):</i>			
<i>STEREO-A; HET (0.7-4 MeV)</i>	07 : 29	09 : 30	11 : 11
<i>STEREO-B; HET (0.7-4 MeV)</i>	07 : 40	<i>Too weak</i>	11 : 25
L1; EPHIN (0.25-10 MeV)	13 : 00 \pm 30	<i>Data gap</i>	14 : 22
<hr/>			
<i>SEP protons (1 AU):</i>			
<i>STEREO-A; HET (29.5-100 MeV)</i>	07 : 58	09 : 30	<i>Data gap</i>
<i>STEREO-B; HET (29.5-100 MeV)</i>	08 : 19	18 : 45	11 : 48
L1; EPACT (28-72 MeV)	22 : 30 (+1 day)	08 : 25	00 : 15 (+1 day)
GOES 13 (> 100 MeV)			18 : 00 \pm 01 : 00
<hr/>			
<i>SEP on Mars:</i>	07 : 45	09 : 00	12 : 00

Table 1. Sequence of first detection times by different instruments for the three studied events. First observation times in Radio type II and III, soft and hard X-ray, and high energy γ -ray observations are presented. Energetic particle (high energy protons and electrons at 1 AU and at Mars) onset times are given as well.

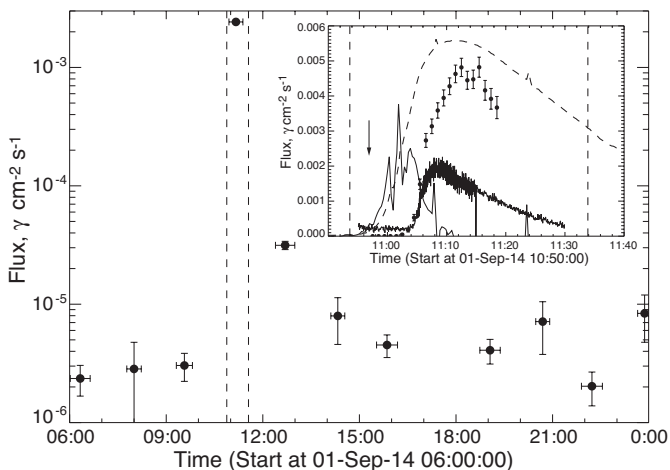


Fig. 3. Time history of the >100 MeV flux from $\leq 10^\circ$ of the Sun revealing the 2014 September 1 LAT event. Vertical dashed lines show the estimated soft X-ray start and end times from the SAX instrument on *MESSENGER* that directly observed the flare. The inset shows 1-min accumulation LAT flux data points and arbitrarily scaled 100-300 keV count rates observed by *Fermi*/GBM. The dashed curve shows the 1–4 keV time profile observed by the SAX instrument. The vertical solid arrow depicts our estimate of the CME onset from inspection of *SDO*/AIA images and the Type II radio emission began about 3 min later. The derivative of the 1–4 keV emission plotted as the thin solid curve is an estimate of the hard X-ray time profile at the flare site.

tion of the LDGRFs and SEPs in terms of the expanding coronal shock. The in-situ measurements are highly complementary because:

- The onset of the relativistic electron flux and its intensity measured in-situ at the spacecraft, along with their magnetic connectivity to the Sun, provide a direct measurement of the level of energisation of particles along a given magnetic field

line as well as information on the energetic electron solar release times,

- The peak level of the particle flux and its integrated value over the event provides information on the number of accelerated particles that propagate outward from the Sun along specific field lines. With certain assumptions, they can also be used to estimate the number and energy of particles propagating sunwards,
- Solar energetic particle spectra can be compared with the particle spectra at the Sun derived from hard X-ray γ -ray emission, although the in-situ spectra are likely modified by particle propagation and diffusion in the heliosphere.
- When measurements from several well-separated spacecraft are available, the rapid increase of SEP flux at these probes provide information on particles accelerated across a broad range of heliographic longitudes (Rouillard et al., 2012; Lario et al., 2014).

The main focus of this paper being the relation between the LDGRF and the expansion of coronal shocks we have placed our analysis of the SEPs measured in situ in the appendix. The conclusions drawn from this analysis are that, all spacecraft considered, the strongest measured SEPs were during the 2014 Sep 01. The peak SEP flux measured on 2013 Oct 11 and 2014 Jan 06 were one order and three orders of magnitude lower than the 2014 Sep 01 SEP event, respectively. This hierarchy follows that of the LDGRFs peak intensities for the three events. Probes well-connected to the CME source region measured a significant increase of the highest SEP flux between 10 MeV and 100 MeV. Probes connected to the solar surface far from the CME source longitude measured much lower levels of SEP flux. The STEREO 0.7-4.0 MeV electron data were between 50 and 100 times higher during the 2014 September 01 event than during the 2013 October 11 event, we will use this observation in the discussion section to interpret the relative strength of the GBM hard X-ray spectra. As we shall see the in-situ measurements suggest that a common accelerator is acting in the corona to produce the

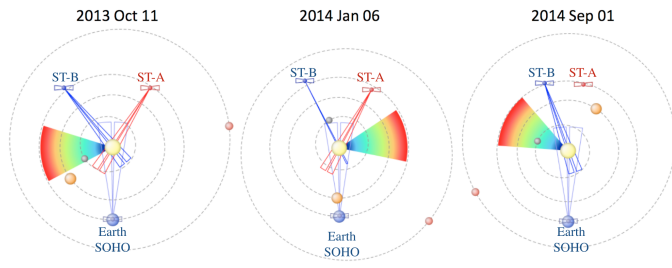


Fig. 4. View of the ecliptic plane from solar north of the orbital configuration of the four inner planets (plotted as spheres), the *SoHO* spacecraft and the *STEREO* spacecraft (symbols). The Earth position is fixed to the bottom of the figures. The extent of the camera fields-of-view in the ecliptic plane used in the triangulation of the CME pressure wave are plotted for each case. The direction of propagation of the CME is shown as a color-coded cone of fixed longitudinal extent. These directions of propagations were derived by the HELCATS project using heliospheric imaging (except for the 2014 Sep 01 case, where the coronal shock nose propagation direction was used).

gamma-ray and the SEP events. The onset times of the particle flux increases measured the in-situ data are included in Table 1.

2.3. CME propagation and 3D determination of the pressure wave fronts

In our study of the three CMEs associated with the behind-the-limb events we used complementary datasets from *STEREO*, *SoHO* and *SDO*. For each event, the CME eruption and propagation were observed in EUV (*SDO*, *STEREO*) and in white-light images (*SoHO*, *STEREO*) from observatories situated at least two of the three available vantage points.

Figure 4 shows the positions of the four observatories used to triangulate the CME extent in three dimensions. The *SDO* location is the same as Earth and *SoHO* on these scales. Also shown are the fields-of-view of the instruments and the locations of the four inner planets. A first rough estimate of the directions of propagation for the 2013 Oct 11 and 2014 Jan 6 events was deduced from solar wind imaging and given in the catalogue of CMEs produced by the Heliospheric Cataloguing, Analysis and Techniques Service (HELCATS) project¹. As there was no solar wind imaging available for the 2014 Sep 01 event, the direction of propagation of this CME is defined as the nose of the triangulated shock (derived in the next paragraphs). The heliocentric longitudes of propagation of the 2013 Oct 11 and 2014 Sep 01 eruptions were behind the Eastern solar limb while that of the 2014 Jan 06 eruption was behind the Western solar limb.

To derive the 3-D extent of the CME low in the corona we used EUV observations from (*SDO* and *STEREO*) and white-light observations from (*SoHO*, *STEREO*). Our requirement was that imaging data was acquired from at least two of the three available vantage points. The 3D triangulation technique employed is explained in Rouillard et al. (2016) and we refer the reader to this paper for a detailed description. In a nutshell, the technique tracks in 3-D the region perturbed by the pressure front generated by the expansion of the CME. This region consists usually of a bubble visible off-limb in combined EUV-white-light images as well as a wave front visible on disk

in EUV images (Vourlidas & Ontiveros, 2009; Patsourakos & Vourlidas, 2009). In this reconstruction technique the wave front is considered to be the intersection between the 3-D bubble, modelled as an ellipsoid, and the coronal region located just above solar surface imaged in EUV. The bubble-EUV wave system is considered to be the outermost extent of the region perturbed by the CME as it forms and expands in the corona. Areas of the bubble surface moving at speeds exceeding the local characteristic speed of the coronal medium (through which the bubble is propagating) are the location where a shock wave is likely to form.

We show in Figure 5a,c,e a selection of images for the three events from the three instruments. We manually extracted the location of the EUV wave and the CME bubble at all available times and from all available viewpoints (EUVI and coronagraphs onboard *SDO*, *SoHO* and *STEREO* spacecraft). We used EUV and white-light images from the three vantage points for the 2013 October 11 and 2014 January events but only from two for the 2014 September 01 event because no *STEREO* A data was available. The manually selected points are plotted as red crosses on the images of the CMEs. The CME events erupted on the far side of the Sun and it was essential that the *STEREO* EUV instruments provided on-disk images of the source regions situated on the far side. This allowed us to track the expansion of the CMEs during the early stages of their formation, in particular the EUV wave expansion. The manually selected points plotted as red crosses on the images are also plotted on the cartoons of the CMEs in rows (b), (d) and (f) of Figure 5. We assumed that a 3-D ellipsoid could model the pressure front, and chose the dimensions of the ellipsoid (defined by a set of its three axis values and its central position) such that the locations of the red crosses, as viewed from the different vantage points, best reflected the rendered ellipsoid. This included the two constraints that the ellipsoid, as viewed off the solar limb passed by the outline of the bubble and that the intersection of the ellipsoid with the solar surface passed by the EUV front. We obtained a set of fitted ellipsoids covering the first hour of the CME expansion as viewed from Earth and from at least one of the *STEREO* spacecraft.

We follow the method outlined in Rouillard et al. (2016) to compute the 3-D expansion speed of the shock surface. This procedure first involves selecting a grid of points on the fitted ellipsoid at time t and then finding the locations of the closest respective points on the ellipsoid at previous time-step $t - \delta t$. The distance travelled between these points was divided by the time interval δt to obtain an estimate of the 3-D speed of the shock surface as a function of time. We list the maximum CME speeds for the three events in Table 2.

The results of our analysis are provided in Figure 6 for the three events. In panels (a-c) we show the extent of the pressure waves in the ecliptic plane 30 minutes after the onset of radio type III bursts. The speeds at different points of the shock-front ellipsoids are color coded. The maximum speed at any one time is typically found at the nose (apex) of the structure. For example, the nose of the 2014 Sep 01 event reached a speed of 2141 km/s and is by far the fastest event of the three considered in this study. The maximum speeds reached at any time during the three CME expansions are given Table 2. In panels (d-f) we plot the time evolution of the radial extent and the maximal speed of the shock front for each event. The 2013 Oct 11 event accelerated rapidly in low corona from 07:10 to 07:20 UT up to

¹ Project website: <https://www.helcats-fp7.eu/>

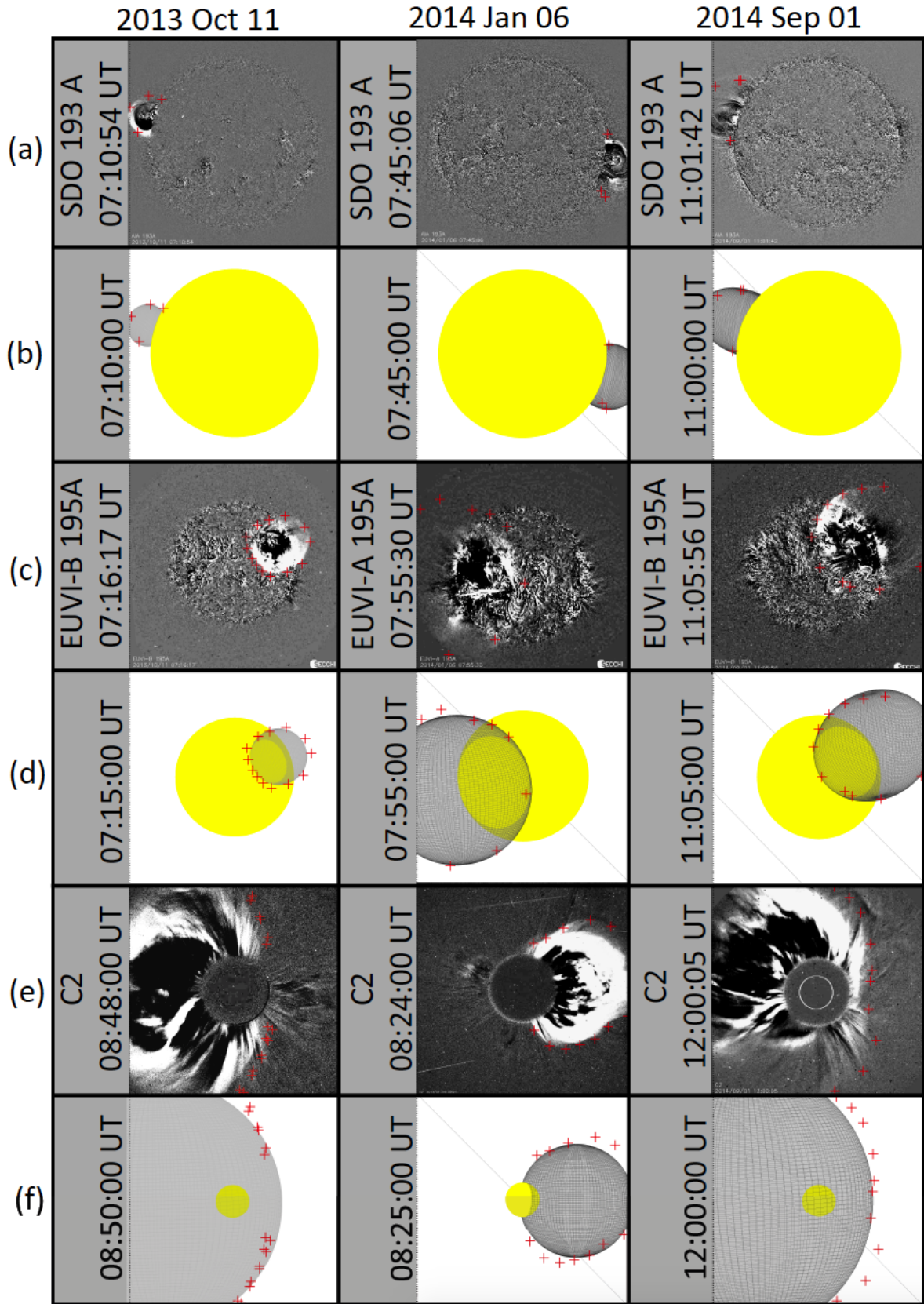


Fig. 5. This figure compares running-difference images (rows a,c,e) of the three events with the results of applying the fitting technique (rows b,d,f) developed in [Rouillard et al. \(2016\)](#). The images are from the *SDO* AIA and the *STEREO* EUVI instruments (rows a and c) and from the *STEREO-LASCO* C2 instrument (row e). Red crosses superposed on the fitted ellipsoids show the measured contours of the propagating fronts observed in the running difference images and are used to constrain the extent and location of the fitted ellipsoids at each time.

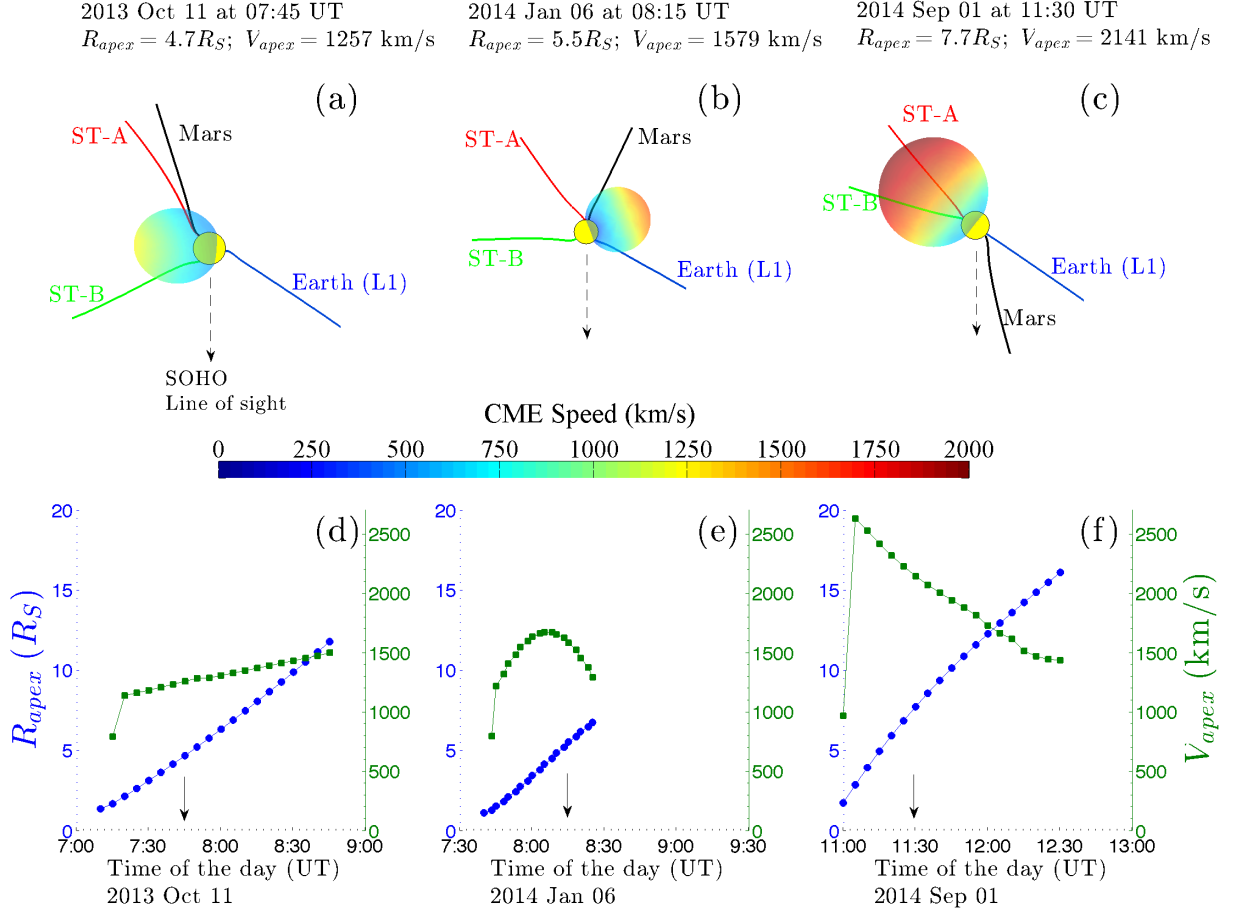


Fig. 6. Top panels a, b, and c: three views of the ecliptic plane from solar north depicting the ellipsoids of the three CME relative to the Sun (drawn as a yellow filled circle) approximately 30 minutes after the accompanying type II radio bursts. The downward arrows depict the Earth’s location. The derived 3-D shock speeds determined by the triangulation technique are shown by the coded colors superimposed on the ellipsoids. The four colored lines depict the magnetic field lines, onto which particles accelerated by the shock, that are connected to spacecraft making in situ measurements. Bottom panels d, e, and f: the time-variation of the derived speed and heliocentric distance of the apex of the CME front for the three CME events. The black vertical arrows indicate the times corresponding to the snapshots in the top panels.

Date	$V_{CME,max}$ (km/s)	V_{sw} (km/s)		
		L1	STA	STB
2013 Oct 11	1580	394	343	323
2014 Jan 06	1880	396	351	383
2014 Sep 01	2625	443	418	444

Table 2. Table relating the dates of eruptions, CME pressure wave maximal speeds as derived by the triangulation technique, and solar wind speed values measured in-situ at the three vantage points at 1 AU (Lagrange point L1, STEREO-A and STEREO-B)

1100 km/s and its corresponding height was $2R_{\odot}$. Then it continued its acceleration phase but much more gradually, reaching 1500 km/s by 08:45 UT and corresponding height of $\approx 12R_{\odot}$. The 2014 Jan 06 pressure wave was fitted over a 1 hour-time interval. Its initial acceleration phase started at $\sim 07:40$ UT and continued up to 08:10 UT when the maximum speed was reached, 1880 km/s, and corresponding apex height of $\approx 5R_{\odot}$.

After this phase the pressure wave started decelerating. The acceleration phase was more abrupt and shorter lived during the 2014 Sep 01 event; it reached 2625 km/s between 10:55 to 11:05. The deceleration phase started just after and the front speed was 1500 km/s when the apex height was $\sim 17R_{\odot}$ (by 12:30 UT). These different expansion profiles are likely the result of different properties of the magnetic piston driving the eruption of the CME.

Also shown in panels (a-c) of Figure 6 are representative magnetic field lines connecting the different spacecraft considered in this study and the expanding pressure front. We follow the procedure outlined in Lario et al. (2014) and Rouillard et al. (2016) that assumes the interplanetary medium consists of Parker spirals defined by the solar wind speeds measured at the connecting spacecraft; these speeds are given in the Table 2. This spiral is traced from the spacecraft down to $15R_{\odot}$ and the coronal magnetic field is obtained by a 3-D MHD model. This model will be described in § 3.2, it is the the Magneto-Hydrodynamic Around a Sphere Thermodynamic (MAST) model (Lionello et al. 2009). This mapping of magnetic

connectivity will be exploited to discuss the complementary SEP measurements acquired in situ during the three LDGRFs analysed here.

3. Magnetic connectivity of the shock front to the Sun and space

In this section we develop the model to test whether particles accelerated at the shock front of a CME can explain the sustained >100 MeV γ -ray emission observed by Fermi. This is based on our ellipsoid approximation for the pressure wave and knowledge of the coronal magnetic field lines that it intersects as a function time, some of which can reach the visible disk of the Sun as view from Earth. We derive them using two different methods in the next two sections. In the last section we project the velocities of the shock as it crosses these field lines onto the locations where they intersect the solar photosphere at different times in its expansion for the three flares. A similar process allows us to project these velocities onto field lines reaching the spacecraft making in-situ particle measurements.

3.1. The Potential Field Source Surface (PFSS) model

The PFSS reconstruction technique (e.g., Wang & Sheeley, 1992) can be used to model the coronal magnetic field between one R_{\odot} and a source surface, typically placed at $2.5 R_{\odot}$. This model only requires a magnetogram of the Sun on a given date. The two main assumptions of this technique are the absence of currents in the corona and the presence of a spherically uniform source surface. The latter assumption forces a rapid expansion of the magnetic flux tubes between the solar surface and the source surface, where the field lines are forced to be radial. While this model provides fairly accurate estimates of the global magnetostatic topology of the corona, it does not give information about other required plasma quantities, such as local density and temperature and therefore cannot be used alone to provide the Mach number of the shock. The version of the PFSS model used here comes from the Lockheed Martin Solar And Astrophysics Laboratory (LMSAL)². The field extrapolation is based on evolving surface magnetic maps constructed from data taken by the Helioseismic and Magnetic Imager *Helioseismic and Magnetic Imaging* (HMI; Scherrer et al., 2012) onboard *SDO*. These maps account for the transport and dispersal of magnetic flux across the photospheric surface using a flux-transport model (Schrijver & De Rosa, 2003). The magnetic transport processes are differential rotation and super-granular diffusion and they continuously modify the distribution of photospheric magnetic fields. In the analysis that follows, we assume that the magnetic field is purely radial above the source surface. We note that the magnetic flux redistribution can result in highly non-radial field lines in between the solar surface and the source surface at $2.5 R_{\odot}$. At this external boundary the magnetic field is constrained to be purely radial. In this study, we use the PFSS model primarily to compare the derivation of magnetic connectivity obtained with magnetohydrodynamic models described in the next section.

3.2. MAST model

Magneto-Hydrodynamic Around a Sphere Thermodynamic (MAST) model is a MHD model (Lionello et al., 2009) that includes detailed thermodynamics with realistic energy equations accounting for thermal conduction parallel to the magnetic field, radiative losses, and coronal heating. The effect of Alfvén waves on the expanding coronal plasma is also included using the so-called Wentzel-Kramers-Brillouin approximation. The MAST model provides the distribution of the coronal density and temperature that PFSS cannot. The temperature at the lower boundary in this model is 20,000 K (approximately the upper chromosphere), and the transition region is included in the model. Special techniques are used to broaden the extent of the transition region so that it is resolvable on 3D meshes, but still gives accurate results for the coronal part of the solution. The coronal heating description is empirical and the coronal densities arise entirely from the heating and its interaction with the other terms in the set of fluid mass/momentum/energy equations. The simulation results used here employ SDO HMI magnetograms on a given date as input at the inner boundary $r = R_{\odot}$ of the simulation grid. The simulation grid extends from 1 to $30 R_{\odot}$. The weak points of these MHD simulations are lower grid resolution than in the PFSS model, magnetogram smoothing and numerical diffusion. The latter can cause magnetic field lines to display unphysical behavior at large heliocentric distances, typically beyond $15 R_{\odot}$. It does not affect our estimates of connectivity lines since we take the intersection point between the Parker Spiral and the MHD integrated line at lower radii, i.e. $r \leq 15 R_{\odot}$.

3.3. Shock front connectivity with the solar surface

We now combine our reconstruction of the CME pressure front with the magnetic field models to determine the CME velocities when the shock front passes field lines that reach the solar photosphere visible from Earth. The results of the MAST and PFSS models were provided on a 3D discrete numerical grid in heliocentric coordinates. We then interpolated the coronal parameters from the model grids to the grid of the surface front that we approximated with an ellipse. In doing this we follow the procedure described in Rouillard et al. (2016) that uses trilinear interpolations between two grids in spherical coordinates (volume weighting technique).

There are certain approximations with this procedure, a coronal shock marks the outer boundary of the region influenced by an erupting CME, therefore upstream of the shock location we enter the background solar corona. We model this background corona the MAST MHD model or PFSS magnetostatic reconstructions along with some assumption about the structure of the interplanetary magnetic field. In this way we can estimate the magnetic link between the coronal shock and the spacecraft making in-situ measurements. However downstream of the shock, two types of regions are encountered; (1) the magnetic piston that produces the coronal shock (the so-called CME core) with its often complex topology involving magnetic flux ropes, and (2) the background corona disturbed by the expanding shock wave. Our understanding of the detailed topology of CME cores is not sufficiently advanced at this stage to model this region with enough detail for the purpose of tracking particles. We, therefore, ignore the presence of the piston and model the magnetic connectivity as if the ellipsoidal shock in an unperturbed background corona both upstream

² <http://www.lmsal.com/derosa/pfsspack/>

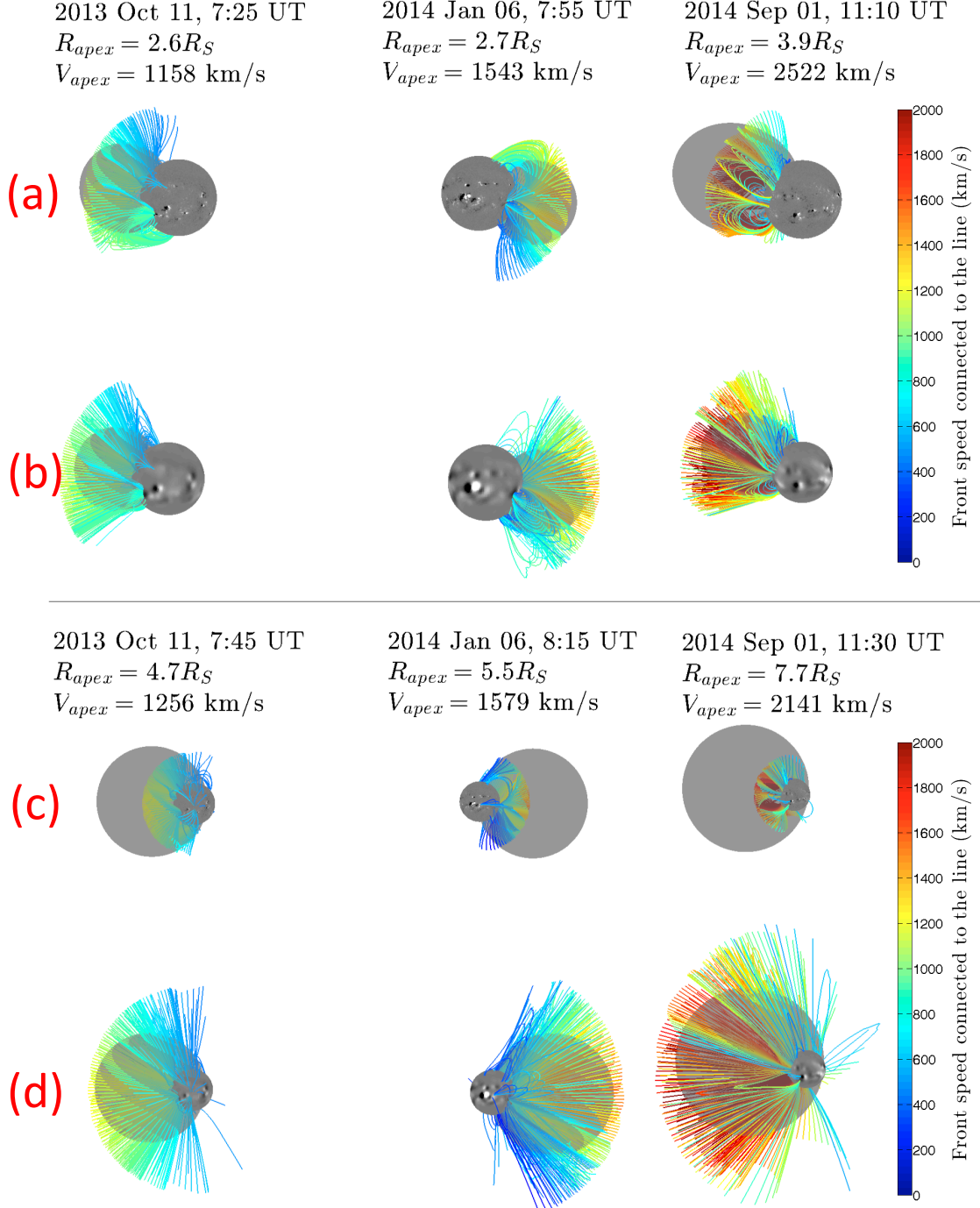


Fig. 7. Lines of connectivity between the shock front (smooth gray ellipsoid) and the Sun (SDO images) as viewed from Earth 10 and 30 minutes after the Type III radio event for the PFSS (a, c) and MAST (b,d) models for the three events. The color coding of the lines depicts the shock speed at the point of intersection of the field line with the shock surface. We do not plot the assumed radial field lines above the source surface at $2.5 R_{\odot}$ for the PFSS model (rows a and c).

and downstream of the shock. We consider both the open and closed magnetic field lines and trace these lines from the shock sunward and anti-sunward until a boundary is reached, either at the photosphere or near 1 AU. For magnetic loops, a shock will therefore connect at two distinct locations on the photosphere.

In Figure 7 we present ten percent of the 5041 open and closed magnetic field lines that we traced through the simulation grids for the PFSS (rows a and c) and MAST (rows b and d) coronal models for the three events. The plotted field lines intersect the pressure front (shown in gray) some 10 (a,b) and 30 (c,d) minutes after the onset of type III radio burst. The color coding of the field lines is defined by the value of the shock

speed at the point of intersection of the line with the shock surface, with the red lines mostly associated with the fast nose of the CMEs.

Overall, the PFSS and MAST models provide very similar field line connectivities between the shock front and the solar surface, only occasionally does a point on the pressure front connect to solar surface points that are considerably apart. This difference may be due to the differing magnetogram resolutions, the latter is higher for PFSS. In addition, the presence of a source surface in the PFSS model can force a stronger expansion of magnetic flux tubes between R_\odot and $2.5R_\odot$ than modeled in MAST. Both effects are important and it is not obvious to know which one is more realistic. We find typically a discrepancy in the field line mapping between the two models of 10 degrees in heliocentric coordinates at the photosphere. We consider this difference acceptable for this work, we use the MAST model that provides the necessary coronal parameters to derive the properties of the pressure wave in our ensuing analyses.

Another point concerns the presence of the magnetic piston downstream of the shock front. In this work we ignore it in order to keep the technique simple. However, the magnetic piston has an important effect on the post-shock coronal plasma. It exerts an important dynamical pressure and compresses the downstream fluid towards the outer parts of the expanding pressure front. Inclusion of the magnetic piston in our model would redirect magnetic field lines, that are currently connecting the nose of the pressure wave to the vicinity of source region, towards the flanks of the whole structure. Other processes involving magnetic reconnection may also develop to reconfigure the magnetic field topology. This is beyond the scope of this analysis.

For both numerical techniques, the field-line tracing shows that high-speed (≥ 1000 km/s) shock fronts are connected to the visible solar disk within 10 minutes after the first appearance of the CME front surface in EUV images. As will be discussed later, γ -ray emission observed by *Fermi*-LAT also begins about 10 minutes following the CME onsets for the 2013 October and 2014 September events.

A clearer way of presenting the access of shock-front accelerated particles to the solar atmosphere is to plot the results shown in Figure 7 on Carrington maps. As the MAST and PFSS models give comparable results, and because the MAST model allows us to study more physical aspects of the shock front, we only plot the MAST results in Figure 8. The Figure presents six Carrington maps displaying the location of the photospheric footpoints of magnetic field lines connected to the front/shock surface 10 and 30 min after the CME onsets for the three events. The visible solar disk is delimited by dashed vertical lines and its center is marked by a blue cross. For each footpoint we compute the average value of the shock-front speed magnetically connected to that point of the solar surface. The highest front speeds mapping to the visible disk occurred during the 2014 September 01 event despite the fact that the flare location is the furthest beyond the limb of the three events. Once again it is clear that shock fronts with speeds >1000 km s^{-1} were connected to the visible solar disk within ten minutes of the CME onsets.

During the first hour of the CME eruption, the distribution of footpoint locations are associated both with coronal holes where open field lines are rooted and coronal loops extending from the solar surface to the shock. As the shock expands the size of the pattern increases and large front speeds connect to

an increasing surface area. Even one hour after onset, when the front is connected to field lines intersecting the entire visible Sun, 30% of the field lines are closed magnetic loops, not connected to the interplanetary medium. Most interestingly, we note that within 10-15 minutes of the flare onset, the solar disk visible from Earth is magnetically connected to fast shocks for all three events with a strong disparity in speed between the different events that reflect the different kinematic properties already observed in Figure 6.

4. Comparing physical parameters of the shock/magnetic-field-line model with γ -ray observations

In addition to the magnetic connectivity it is possible to derive the shock normal angle with respect to the local magnetic field orientation θ_{Bn} and different Mach numbers (only for the MHD model). For the 2012 May 17 CME, it was shown that high fast-magnetosonic number $M_{fm} > 3$ regions can develop on the shock front (Rouillard et al., 2016).

As we discussed earlier, the MAST model provides the capability for including physical quantities other than the shock-front speed into the magnetic connection model. These parameters include the magnetic field strength and orientation, plasma temperature and density at the front location that enable us to estimate the magnetic field obliquity with respect to the shock-normal θ_{Bn} and Mach numbers. These parameters are defined by the formulae

$$\cos \theta_{Bn} = \frac{\mathbf{B} \cdot \mathbf{n}}{|\mathbf{B}|}; \quad M_A = \frac{V_{sh}}{\sqrt{V_A^2 + V_w^2}}; \quad M_{fm} = \frac{V_{sh}}{\sqrt{V_{fm}^2 + V_w^2}}, \quad (1)$$

where \mathbf{n} is the local shock-normal vector, V_{sh} is the local shock speed, V_A is the Alfvén speed, V_{fm} is the fast-magnetosonic speed and V_w is the background solar wind speed. The latter enters in the Mach number estimation because the appropriate frame for our calculations is the local fluid frame, i.e. the background solar wind. The use of the fast magneto-sonic number, instead of the Alfvénic Mach number, is more relevant here because the magnetic field intensity can drop to very low levels in the coronal neutral region where magnetic flux tubes expand greatly and can even annihilate due to the presence of current sheets. The sound speed remains at about the same value in the quasi-isothermal upper corona. Since M_{fm} retains the contribution from both speeds, we thereby avoid excessively high values of the Mach number in such regions. For the 2012 May 17 CME, it was shown that high fast-magnetosonic number $M_{fm} > 3$ regions can develop on the shock front (Rouillard et al., 2016).

The use of the fast magneto-sonic number, instead of the Alfvénic Mach number, is more relevant here because the magnetic field intensity can drop to very low levels in the coronal neutral region where magnetic flux annihilates, while the sound speed remains at about the same value in the quasi-isothermal upper corona. Shock regions with critical Mach numbers M_{cr} , larger than ≈ 2.7 are usually considered efficient particle accelerators. Self-consistent, but still idealized simulations, indicate that the particle acceleration efficiency of $M_{fm} > 5$ shocks is such that it can transmit more than 10% of its kinetic energy into energetic ions (Caprioli & Spitkovsky, 2014). In the precise context of coronal shocks, Ng & Reames (2008)

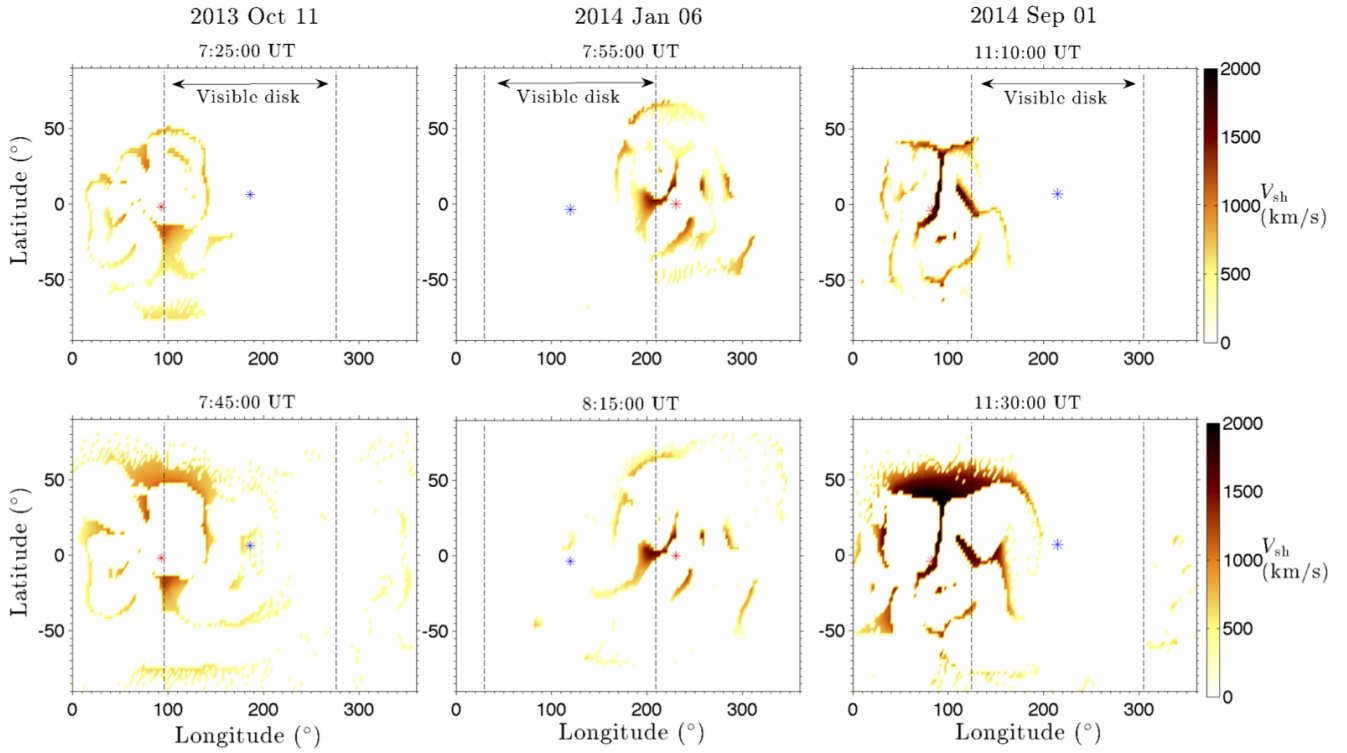


Fig. 8. Carrington maps showing the footpoints of magnetic field lines connected to the modelled shock front 10 minutes and 30 minutes after the flare onset derived with the MAST model. Color coding follows the value of the shock front speed V_{sh} magnetically connected to the corresponding solar surface location. The vertical dashed lines mark the approximate location of the solar limbs as viewed from Earth and the blue cross marks the location of the center of the disk. The flare location or equivalently the CME source region is shown as a red cross.

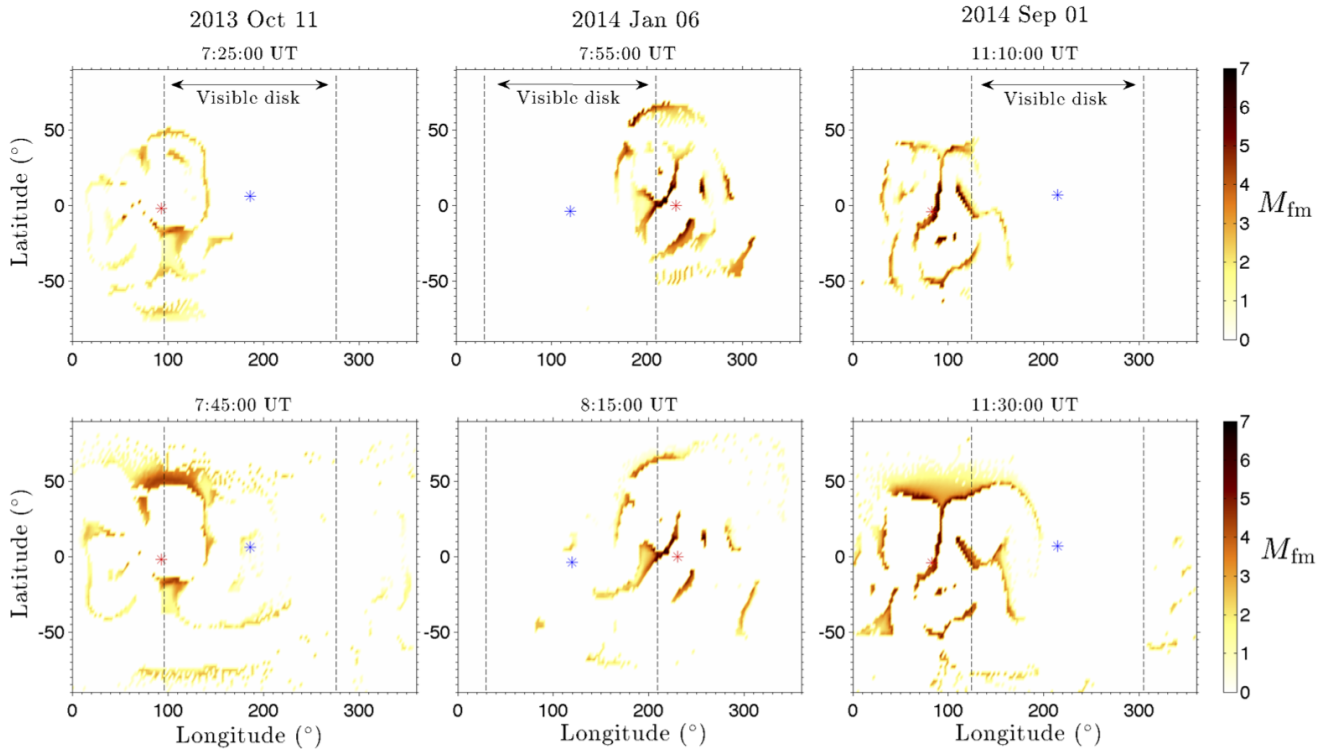


Fig. 9. Carrington maps showing in the same format as in Figure 8, the distribution of M_{fm} .

demonstrated that a 2500 km/s quasi-parallel shock propagating through coronal media with typical magnetic field and sound speeds accelerate seed protons from several keVs to \sim GeV energies in 10 minutes. They also show that both shock speed and Mach number are both important parameters to consider.

We compute M_{fm} over the shock-front surface by dividing our estimated speeds over the 3D ellipsoid with the fast-mode speeds obtained with the plasma parameters modeled by the MAST model. In Figure 9 we project these local M_{fm} values onto the solar surface by tracing the magnetic field lines connecting the shock to the solar photosphere (as illustrated in Figure 7). The M_{fm} values are plotted onto Carrington maps in the same way as we plotted CME speeds in Figure 8. We find that the visible disk connects to high M_{fm} values (≈ 2.7) during all three events as early as 10-15 minutes after the CME onset. Unlike the projected shock-front speed, there is no striking difference in the three events with regards to the M_{fm} values projected on the visible disk. Each event has a contribution with $M_{fm} \geq 3$ on a visible disk from early post-flare times. The contribution is most clear for the 2014 Jan 06 event and more marginal for the two others. Assuming that a fast shock with high-Mach number is an efficient particle accelerator, the magnetic connection established early in the event with the visible solar disk may allow these particles to propagate and impact the surface and produce γ rays visible from Earth. As previously reported by Rouillard et al. (2016), and confirmed for the three events studied here, the highest M_{fm} occurs in the regions where the magnetic field values are very low and the density is high, this typically corresponds to the coronal neutral sheet, the source region of the heliospheric current sheet and its associated heliospheric plasma sheet. These regions could be efficient particle accelerators for a number of reasons discussed in Rouillard et al. (2016).

We also remark an interesting feature by visual comparison between Figure 8 and 9. For the regions with roughly equal V_{sh} the highest M_{fm} is reached at the boundaries of the corresponding coronal holes. It is logically expected because magnetic flux tubes expand rapidly with radial distance near the coronal hole boundaries than in the central regions. This effect is most striking for the 2014 Sep 01 event at 11:30 UT.

We now look in more detail at the early temporal evolution of the shock connectivity and magnetic geometry in the event on 2014 September 01 that had the fastest CME and a source region situated furthest behind-the-limb. In Figure 10 we present the first 15 minutes of shock evolution, in 5 minutes snapshots, as seen from Earth. The left-hand column (panels (a)-(d)) presents the 3D location of the pressure front at 10:55, 11:00, 11:05 and 11:10 UT respectively. Magnetic field lines, color-coded by shock-front speed are plotted in the central column (panels (e)-(h)). The same lines, color coded by the value of the magnetic field inclination to the shock-normal θ_{Bn} are plotted in the right column (panels (i)-(l)). As can be seen, there was no clear magnetic connection of any fast-moving shock regions to the visible disk before 11:05 UT and no magnetic connection at all at 10:55 UT. This also excludes any magnetic connection of the flare region itself to the visible disk since the shock represents the outermost region disturbed by the CME eruption. The figure also clearly illustrates the quasi-perpendicular nature of the shock (i.e. $\theta_{Bn} > 50$ degrees) that is magnetically connected to the visible disk between 11:05 and 11:10 UT. The associated front speeds for these times range from 500 km/s to 1700 km/s, with a mean value of ~ 800 km/s and mean Mach $\langle M_{fm} \rangle \approx 2$. This time range also corresponds to

the onset and increase in γ -ray flux observed by *Fermi*-LAT.

The overall evolution is similar for the two other events: the parts of the early emerging shock front that connected to the visible disk corresponded to the flank of the pressure wave. Therefore these parts propagated transversely to the \sim radial coronal field lines or therefore the interaction was predominantly quasi-perpendicular. As shown by Rouillard et al. (2016) the mostly parallel part of the CME shock relative to the field lines, at least during the early < 30 min post-flare evolution, corresponds to its ‘nose’. The anchor points of the nose-connected field lines for all three events are occulted from the Earth’s point-of-view during the early post-flare times. Thus the quasi-parallel shock parts are only marginally connected to the visible disk up to several tens of minutes after the flare. At later times, when the shock front engulfs a significant part of the Sun, θ_{Bn} evolves gradually to a quasi-parallel configuration.

Figure 11 compares the maximum Mach number, $M_{fm,max}$, the average Mach numbers, $\langle M_{fm} \rangle$, and the average shock geometry $\langle \theta_{Bn} \rangle$ for the shock front crossing all the magnetic field lines connected with the visible disk for the three events as a function of time and using the MAST model. The three panels present the evolution of these quantities for 2013 Oct 11, 2014 Jan 06 and 2014 Sep 01 from top to bottom, respectively. The temporal resolution for determining these parameters is 5 min. The figure also shows the fraction of the visible disk connected to the shock, the flux of 100 MeV γ rays measured by *Fermi*-LAT and 100–300 keV hard X-rays for the 2014 September 1 event. The periods when *Fermi*-LAT did not observe the Sun (South Atlantic Anomaly (SAA) or *Fermi* night as described in Ackermann et al. (2017)) are delimited by gray-shaded areas. The start times of the 2013 October 11 and 2014 September 1 soft X-ray flares were determined using the SAX instrument on *MESSENGER* (§2.1.1 and §2.1.3).

The expansion of the coronal pressure wave started at 07:10 UT on 2013 Oct 11, 10 minutes after the X-ray flare. Hence our speed measurements started around 07:15 UT explaining why the shock-related quantities are delayed compared to the X-ray flare for this event (top panel of the Figure). This delay is less pronounced for the two other events. As shown in this figure early connected parts of the shock to the visible disk are quasi-perpendicular ($\theta_{Bn} > 50^\circ$) and super magnetosonic ($\langle M_{fm} \rangle > 1$ in each case. Some parts reach super-critical values in each event rapidly after connecting to the visible disk ($M_{fm,max} > 3$). The early reached value of these quantities seem to remain roughly constant at later times. The mean and maximal values of the Mach number remain stable around 2 and 5, respectively, up to 40 minutes after soft X-ray flares and $\langle \theta_{Bn} \rangle$ decreases slightly from quasi-perpendicular values $> 50^\circ$ towards quasi-parallel configurations at much later times. Concerning the covered visible disk by shock-connected field lines it is very small during early post flare times and increases rapidly during the bulk of the γ -ray emission up to 5% values.

We conclude that, although the time resolution for determining the various shock is only 5 min, we see that for both the 2013 October 11 and September 1 events the gamma-ray flux increases when the fast shock regions form around the CME. This also corresponds to a time when high M_{fm} values and quasi-perp shock parts become connected with the solar disk visible from Earth as seen by the sudden increases in the colored curves.

The LAT detector likely detected γ -rays near 8:00UT (18 minutes after the soft X-ray flare onset) on 2014 Jan 06 but the signal is very weak, as discussed in section 2. In addition,

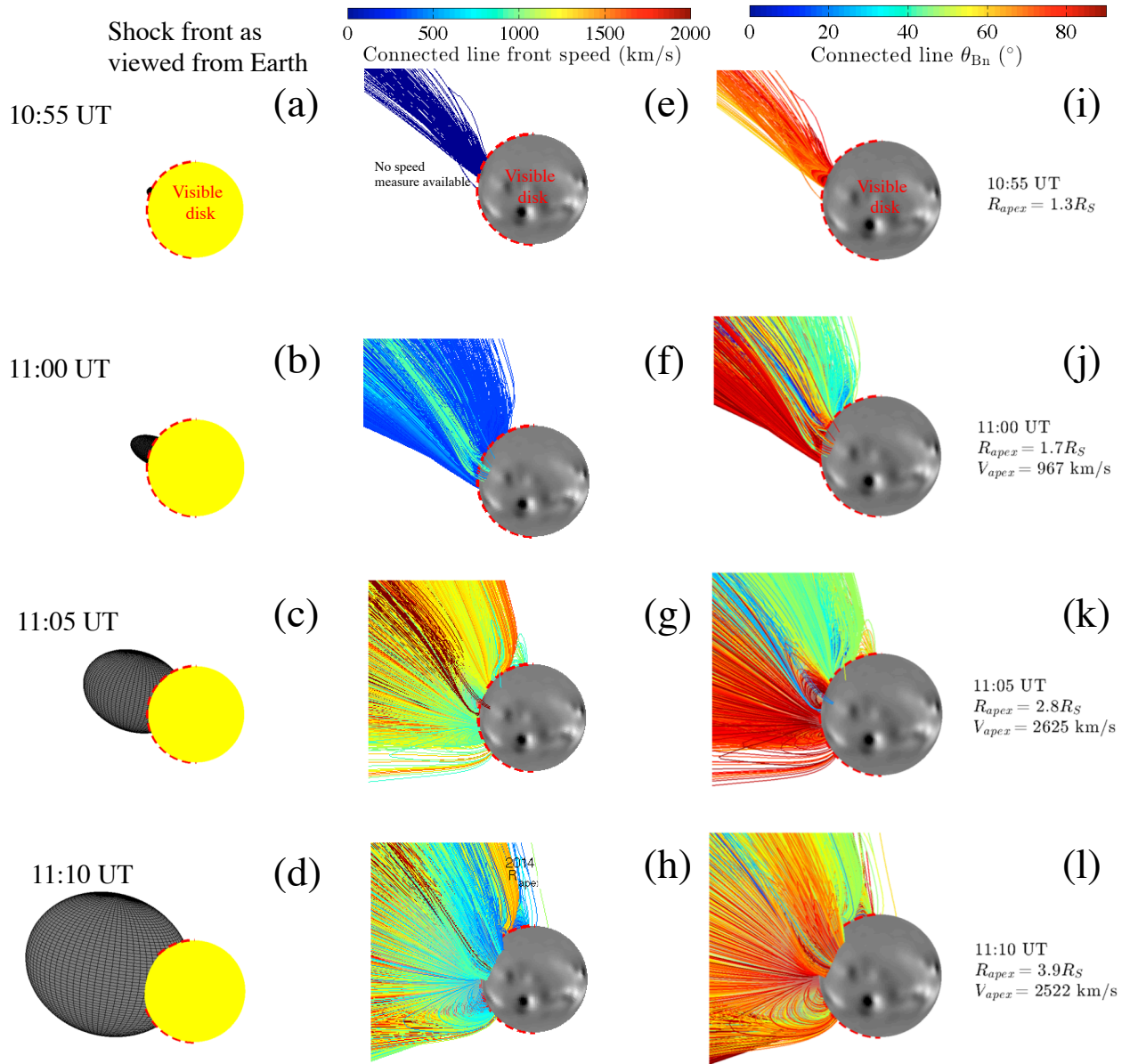


Fig. 10. Temporal evolution of the shock front and magnetic connectivity to the solar atmosphere early in the 2014 September 01 event derived using the MAST model. Left column (panels (a)-(d)) presents the 3-D ellipsoid approximation to the pressure-wave front at 10:55, 11:00, 11:05 and 11:10 UT, respectively, derived from our CME triangulation studies. The visible solar disk is drawn as a yellow sphere delineated by the red dashed line. The corresponding magnetic field lines color-coded by the shock-front speed are plotted in the central column (panels (e)-(h)). The same lines, coded by the value of the magnetic field inclination to the shock-normal θ_{Bn} , are plotted in the right column (panels (i)-(l)). The Sun is represented by a generic magnetogram. The color coded scales are given at the top of the figure.

the detector was unfortunately not observing the Sun (SAA) during the first 15 minutes of the event when the CME accelerated abruptly in the corona. The type II burst and the shock reconstruction suggest that the shock formed during the SAA and that a super-critical part of the shock was connected to the visible disk. These are favorable conditions for the production of γ -rays. The expected detection time for γ -ray emission near 8:00UT occurred concomitantly with a weak ground level enhancement detected by the South Pole neutron monitor (Thakur et al., 2014) but nevertheless some energetic protons (> 700 MeV) by GOES. Thakur et al. (2014) estimated the release time of relativistic protons at 07:55UT towards the end

of the SAA transit.

5. Comparing physical parameters of the shock/magnetic-field-line model with SEP observations

It is possible that shock-acceleration of particles onto magnetic field lines may be responsible for both the protons interacting on the visible solar disk that produced the γ -ray emission and the SEPs observed by spacecraft at 1 AU. In the previous section we showed that the onset times of the γ -rays in two of the events began after the high-Mach shock crossed field lines connected to

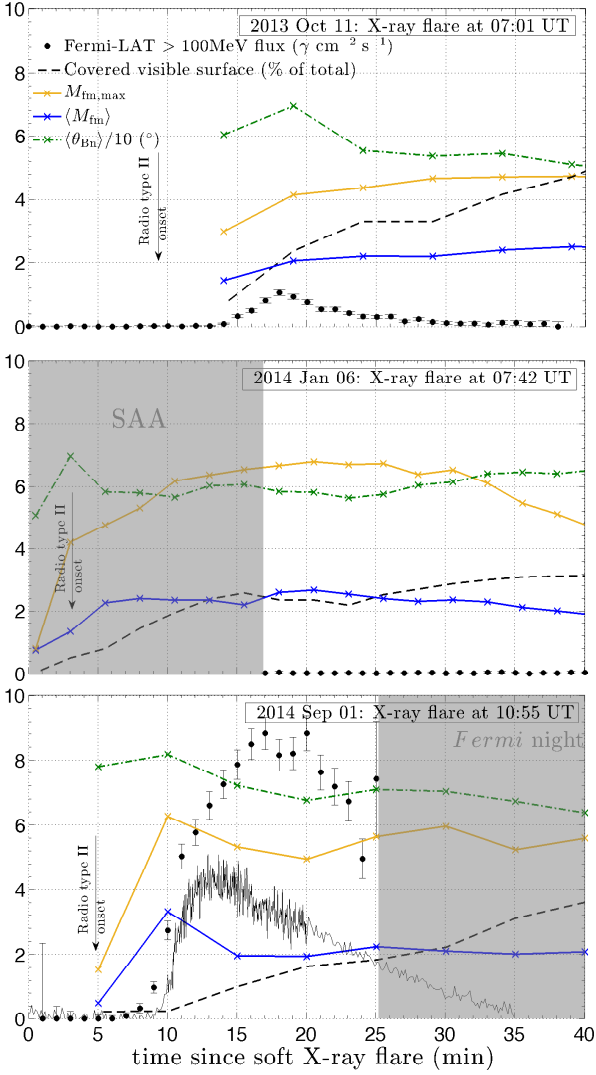


Fig. 11. First 40 minutes of the three events, 2013 Oct 11 (top), 2014 Jan 06 (middle) and 2014 Sep 01 (bottom) we show time series of the maximum Mach number ($M_{fm,max}$; orange line), the average Mach number ($\langle M_{fm} \rangle$, blue line) and the average shock geometry $\langle \theta_{Bn} \rangle$ divided by 10 (green dot-dashed line) derived for all magnetic field lines connected to the visible solar disk. The times at which these quantities were derived are marked with 'x' symbols over the lines. The fraction of the visible solar surface magnetically connected to the shocks is also shown as a dashed black line. Time 0 is defined by the soft-X ray flux, the onset of the metric type II bursts are indicated by vertical arrows and the greater than 100 MeV γ -ray flux measured by the *Fermi*-LAT instrument is shown as filled black circles with corresponding error bars. The γ -ray fluxes presented in the three panels are all multiplied by factor of 2000 for plotting purposes. Times when the *Fermi*-LAT instruments were not observing the Sun are shown as grey-shaded areas. In panel (c) the solid black curve presents also the (rescaled by factor of 2000) 100-300 keV count rates observed by *Fermi*/GBM.

the visible disk. In this section we investigate whether the magnetic connectivity of the same CME shock fronts to the *STEREO* spacecraft precede the observed onset times of the SEPs discussed in § A.1.

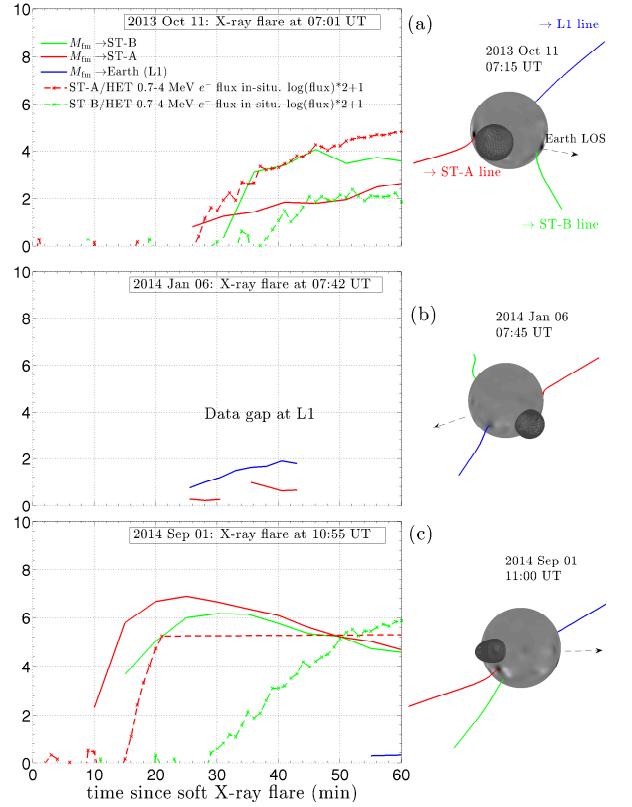


Fig. 12. First 60 minutes of the three events, 2013 Oct 11 (panel a), 2014 Jan 06 (panel b) and 2014 Sep 01 (panel c) where we show the time series of Mach numbers at the sites where the shock fronts intersect the field lines crossing the locations of *STEREO*-A line (solid red line), *STEREO*-B line (solid green line) and L1 (solid blue line). These times have been corrected for ~ 11 min electron propagation time along the Parker spiral. The in-situ energetic electron fluxes in the 0.7 – 4 MeV energy band are plotted using dotted lines: red for *STEREO*-A and green for *STEREO*-B. Time 0 is defined by the soft-X ray flux onset as observed from *MESSENGER*. The right-side panels show the magnetic connectivity field lines, along with the early post-*STEREO*-flare shapes of the coronal shocks, near the times of the radio type II onsets. The dashed black arrows indicates the line-of-sight as seen from the Earth.

On the right side of Figure 12 we plot the field lines connecting the Sun to the *STEREO* spacecraft and to L1 at about the times of the onset of the Type II radio bursts. Also shown are the ellipsoid models of the developing shock fronts. The field lines are assumed to be a Parker spiral between the spacecraft making in-situ measurements down to $15 R_{\odot}$. This spiral is defined by the solar wind speed measured in situ and given in Table 1. Below $15 R_{\odot}$ down to the solar surface, we use the MAST MHD model to derive the topology of the field lines.

On the left side of the figure we plot the time series of the shock Mach numbers where the connected field lines intersect the locations of *STEREO*-A (solid red line), *STEREO*-B (solid green line) and L1 (solid blue line). These are compared with the time profiles of the flux 0.7 – 4 MeV electrons, plotted in a) for the 2013 Oct 11 and c) for the 2014 Sep 01 event. We chose the 0.7 – 4 MeV energy band because these electrons are relativistic and the most energetic of them propagate almost scatter-free from the accelerator to the in-situ probe. If the high Mach number shocks accelerated the electrons, we would expect that the

shocks' intersection times with the magnetic field lines would agree with the electron onset times, after taking into account the ~ 11 min electron propagation time along the Parker spiral.

For the 2013 Oct 11 (a) and 2014 Sep 01 (c) events where direct comparison was possible, we find that the earliest intersection times of the $M_{fm} > 1$ shock regions with field lines connected to *STEREO-A* occur several minutes before the onset times of the SEP electrons at the spacecraft. In addition, the high Mach-number shock connectivity model also predicts the several minute earlier onset times for SEP electrons at *STEREO-A* than at *STEREO-B*. Unfortunately, there were no energetic electron measurements available for the 2014 Jan 06 event from the Wind or SOHO spacecraft, located at the well-connected L1 point to the early $M_{fm} > 1$ shock front.

We therefore conclude that the CME shock-acceleration model accounts for both the onset times of SEP electrons at 1 AU and the onset times of the γ -rays produced by protons propagating to the solar atmosphere visible from Earth.

6. Summary and discussion

We have analysed three CME events on 2013 Oct 11, 2014 Jan 6, and 2014 Sep 1 that (1) erupted behind the solar limb as viewed from Earth, (2) were all associated with the formation of shocks low in the corona as confirmed by the detection of metric type II radio bursts, (3) were associated with detections of >100 MeV γ -rays by the *Fermi*-LAT instrument, and (4) were associated with detections of solar energetic particles in the interplanetary medium. Our goal was to test the hypothesis that the shock that formed around the CME could have accelerated the particles responsible for both the γ -ray emission and the SEPs.

In order to achieve this goal we used coronagraph images of the CMEs from *SoHO*-LASCO and at least one of the *STEREO* spacecraft (Figure 4). From these images (Figure 5), we reconstructed the expansion of the 3-D shape of the CME shock and determined the shock front velocities (Figure 6). By employing a global simulation of the coronal magnetic field (here MAST), we determined how and when the shock front connected to the solar disk visible from Earth and to the spacecraft measuring SEPs. We then calculated the times when fast and super-critical parts of the shock, capable of accelerating protons to energies sufficient to produce pion-decay γ rays deep in the chromosphere, were magnetically connected to the visible disk. Our 3-D reconstruction analysis showed that the shock fronts of the three events were already visible around the CMEs at the onset times of the metric type II bursts (Figure 5). In the 2014 Jan 6 and Sep 1 events we confirmed the presence of the shock at type-II onset by showing that the Mach number exceeded super-magnetosonic values at that time; unfortunately we lacked sufficient observations to infer the shock speed at the time of type-II onset for the 2013 Oct 11 event.

We show that in the three studied cases the Mach number undergoes rapid increase to super-critical values within 15 minutes after type-II onsets. The highest M_{fm} numbers are measured at the shock front 'nose' and near the coronal neutral sheet, just like for the event analyzed in Rouillard et al. (2016). The latter is a region where the magnetic field is low and the density high in MHD simulations. Some of these parts of the shock become magnetically connected to the visible disk before the onset of the > 100 MeV γ -ray emission providing a path between the accelerator and the visible disk (Figure 11). These shock regions

were also shown to have a quasi-perpendicular geometry during the bulk of the γ -ray emission. This effect is due to the fact that early connected elements from far side eruptions are the coronal shock flanks that propagate across quasi-radial coronal field. Strong quasi-perpendicular shocks can be efficient particle accelerators as far as the upstream coronal magnetic field is sufficiently turbulent and the acceleration time is smaller than in quasi-parallel configuration (e.g., Giacalone, 2005).

The present study allows us to compare the properties of the accelerated particles at the Sun and in situ. The first comes from the γ -ray and X-ray observations and provides information about energetic energetic protons and electrons in the low corona and chromosphere. The second comes from the in situ SEP measurements at 1 AU and at Mars that provide information about the population escaping the solar corona. In the strongest event, on 2014 Sep 01, the 0.7–4 MeV electron and 13–100 MeV proton SEP fluxes rose to peaks after the flare. The electron-to-proton flux ratio was about 4.5 as measured in these energy bands. If the electrons and protons producing the observed bremsstrahlung and >100 MeV γ -ray emission came from the same CME-shock source as the SEPs, we would expect their relative numbers to be comparable. From our fits to the bremsstrahlung spectrum, we estimate that about 3×10^{33} electrons with energies between 0.7–4.0 MeV interacted in the solar atmosphere. Our fits to the pion-decay γ -ray spectrum provided us with the spectral index of the protons and number above a few hundred MeV and the comparison with the limit on the neutron-capture line, discussed above, constrained the proton spectral index at lower energies. Assuming that the proton spectral index had a value of -3.0 from 10 MeV to 200 MeV and softened to -4.0 above 200 MeV, we estimate that there were about 5×10^{33} protons with energies between 13–100 MeV that interacted at the Sun. The fact that the inferred numbers of electrons and protons interacting with the low atmosphere are comparable, to what was observed in the SEPs, strongly suggests common origins for these electrons and protons. Moreover, the result from the section 5, where a clear link is established between the shock magnetic connectivity with the spacecraft and the increase of the 0.7–4.0 MeV electron flux, supports the assumption of the shock origin of SEPs.

The same analysis for the 2013 Oct 11 event shows that the peak pion-decay γ -ray flux was about 20 times lower than that in the 2014 Sep 01 event. In the interplanetary medium, the *STEREO* observation indicate that the proton flux was about 6 to 10 times higher in the September event (e.g. section A.1), the same ratio as for the respective peaks levels in > 100 MeV γ rays. The *STEREO* 0.7–4.0 MeV electron data from the *STEREO A/B* spacecraft for both events (Figure A.1), indicate that the SEP electron flux was between 50 and 100 times higher in the 2014 September 01 event than it was in the 2013 October 11 event. Using this ratio and the measured peak hard X-ray flux in the October event, we estimate that the 100–300 keV peak flux from electron bremsstrahlung would have been too small to have been observed by the GBM.

A complementary interrogation concerns the absence of (or very weak) detection by *Fermi*-LAT of the 2014 Jan 06 event while its coronal shock wave was fast and there are evidence of production of very high energy protons up to 700 MeV (Thakur et al., 2014). Yet, *Fermi* was not observing the Sun during the early phases of the coronal shock evolution and significant γ -ray emission could have been missed by *Fermi* between 07:45 and

07:55 UT. Also, this eruption did not produce high levels of very energetic SEPs in comparison to the two other events, as shown in Figure A.1. The peak level of \geq MeV electrons and 20.6 – 60 MeV protons is about ten times less than for 2013 Oct 11 event and several orders of magnitude lower than in 2014 Sep 01 event.

In summary, it was argued that the coronal shock scenario for both the highest energy electron and proton acceleration and γ -ray emission is consistent with observations. This scenario is supported by the fact that fast super-critical shock parts were seen to magnetically connect to the visible disk rapidly after flare even for the behind-the-limb eruptions. However, we found no clear correlation between the shock Mach number and the intensity of the γ -ray flux measured by LAT suggesting that this is not a simple linear relation. It should be noted that averaging the parameter (nV_{sh}) over the visible disk connected parts of the shock can grossly reproduce the time-evolution profile of the > 100 MeV emission if only $M_{fm} > 3$ shock parts are retained. This parameter is highly empirical, hence future improvements of the method should seek physically-grounded models of particle acceleration as a function of readily available information on shock local speed, M_{fm} , magnetic field inclination θ_{Bn} and coronal background properties. It will potentially allow us to accurately estimate the time-dependent flux and energy of precipitating particles on the solar surface and escaping into the inner heliosphere.

Acknowledgements. I.P. kindly acknowledges Rui Pinto for providing the PFSS model grid data and for the help with the MSL RAD data extraction. I.P. acknowledges financial support from the HELCATS project under the FP7 EU contract number 606692. G. Share acknowledges support from NSF Grant 1156092, NASA Fermi/GI grant GSFC #71080, and the EU's Horizon 2020 research and innovation program under grant agreement No 637324 (HESPERIA). We acknowledge usage of the tools made available by the plasma physics data center (Centre de Données de la Physique des Plasmas; CDPP; <http://cdpp.eu/>), the Virtual Solar Observatory (VSO; <http://sdac.virtualsolar.org/>), the Multi Experiment Data & Operation Center (MEDOC; <https://idoc.ias.u-psud.fr/MEDOC/>), the French space agency (Centre National des Etudes Spatiales; CNES; <https://cnes.fr/fr/>) and the space weather team in Toulouse (Solar-Terrestrial Observations and Modelling Service; STORMS; <https://stormsweb.irap.omp.eu/>). This includes the data mining tools AMDA (<http://amda.cdpp.eu/>) and CLWEB (clweb.cesr.fr/) and the propagation tool (<http://propagationtool.cdpp.eu/>). The STEREO SECCHI data are produced by a consortium of RAL (UK), NRL (USA), LMSAL (USA), GSFC (USA), MPS (Germany), CSL (Belgium), JOTA (France) and IAS (France). The ACE data were obtained from the ACE science center. The WIND data were obtained from the Space Physics Data Facility. The MSL RAD data were obtained through the Planetary Data System (PDS).

Appendix A: In situ SEPs

A.1. In-situ measurements near 1 AU

Figure A.1 presents the time evolution of the 20.8 – 60 MeV proton flux measurements at STEREO (HET instruments) and the 19 – 72 MeV proton flux measurements by the Wind spacecraft (EPACT instrument) (panels a-c) and the time evolution of the 2.8 – 4.0 MeV electron flux at STEREO (HET) and 2.64 – 10.4 MeV electron flux by the SoHO spacecraft (EPHIN instrument) (panels d-f). The time series are presented over a 4-day interval starting before the eruption and ending several days after. The onsets of energetic protons for the well-connected vantage points occur typically within 30 minutes of the CME onset. This results from either a close connectivity to the flare site or to the shock crossing the probe-connected field line (e.g., Reames, 1999; Rouillard et al., 2012; Lario et al., 2014). All events last several days and appear to be gradual SEP events. A small ground-level enhancement was reported by

Thakur et al. (2014) during the 2014 Jan 06 event (panels (b) and (e)), that was well-connected with the Earth, even though it was barely detected in γ rays probably because most of the proton interactions occurred on the far side of the Sun. The largest 20.8 – 60 MeV proton flux increase (almost 5 orders of magnitude at STEREO-B) was observed on 2014 Sep 01 (panels c,f). The peak flux on 2013 Oct 11 (a,d) was one order of magnitude lower (less than 4 orders of magnitude increase at STEREO-A) while the peak flux for 2014 Jan 06 was only two orders of magnitude above background. This hierarchy seems to follow the observed peak intensities in high energy γ -rays observed by Fermi-LAT.

The temporal evolution of energetic particles flux from different vantage points, as illustrated in Figure A.1, can be summarised as follows. On 2013 Oct 11 STEREO-A measured a rapid flux increase of relativistic electrons in 2.8 – 4.0 MeV band at 07:29 UT and ten minutes later on STEREO-B (at 07:40 UT). The peak intensity raised to higher values at STEREO-A then at STEREO-B. On L1 only a very gradual increase was measured, starting at \sim 13:00 UT. On 2014 Jan 06 Earth had good connectivity close to the source region. Hence, energetic proton and electron intensity increased probably within 30 minutes after flare. Yet, electron detectors on SoHO and Wind spacecraft do not provide measurements during this early post-flare phase (data gap). Measurements from GOES (Thakur et al., 2014; Ackermann et al., 2017) indicate that > 500 MeV protons were detected starting from 07:57 UT. STEREO-A and STEREO-B were probably poorly connected and displayed late increase in energetic protons flux while no significant enhancement is seen in 2.8 – 4.0MeV electrons. We note that the SEP event on 2014 Jan 07, visible in (b) and (e), is due to the unrelated flare/CME that occurred close to the center of the visible solar disk (Möstl et al., 2015). Finally, on 2014 Sep 01 both STEREO-A and STEREO-B measured a rapid flux increase in 20.8 – 60MeV protons and 2.8 – 4.0MeV electrons. For electrons the onset was at 11:11 UT and at 11:28 UT on STEREO-A and STEREO-B, respectively. Proton onset was measured at 11:48 UT on STEREO-B while no data point was available from level 2 STEREO-A data. Indeed, the public STEREO level 2 data excluded some measures during this period while beacon plots show that, not only the onset occurred earlier on STEREO-A, but that the peak intensity was higher than on STEREO-B. This latter is not seen in Figure A.1(c,f) where level 2 data was used. As advised, we use level 2 data here as more relevant for scientific purposes. Concerning the L1 measurements, similarly to 2013 Oct 11 event, a delayed and gradual increase in energetic particles is seen. We refer to the Table 1 where the particle onset times from different vantage points and for the three events are given following this analysis.

The broad longitude distribution of the SEPs in space can be tested because at least one of the in-situ instruments was magnetically connected to the Sun at a location far from the site of the flare; these are the instruments on: near-Earth spacecraft for the 2013 Oct 11 event, STEREO-B spacecraft for the 2014 Jan 06 event and Earth/Mars for the 2014 Sep 01 event. This can be seen from the spacecraft connectivity lines in Figure 6. The broad longitude extent will be studied later in this work once the temporal evolution of shock magnetic connectivity is established.

In Figure A.2 we present the proton spectra at the three vantage points (Earth environment, STEREO-A and STEREO-B)

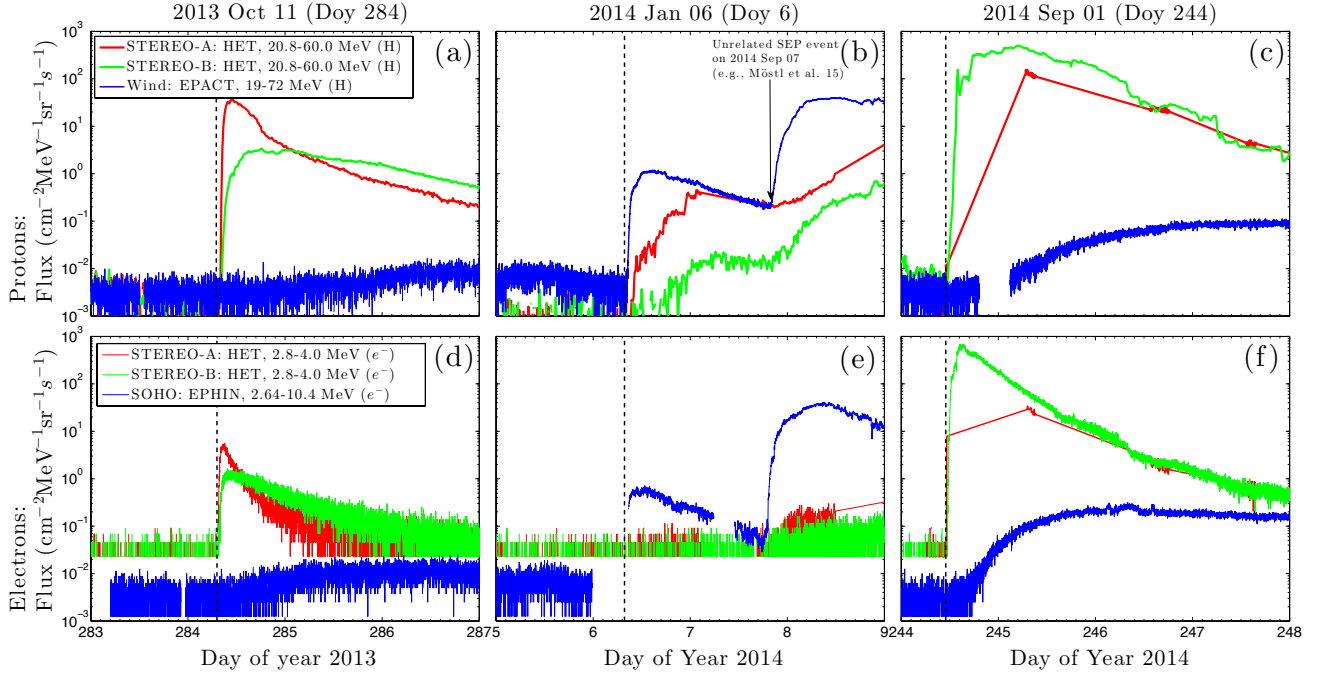


Fig. A.1. *Top panels:* Time series of proton flux measured by the HET instrument (20.8 – 60 MeV energy band) on *STEREO-A* (red lines) and *STEREO-B* (green lines) and by the EPACT instrument (19-72 MeV channel) on Wind (blue lines) for the three events: (a) 2013 Oct 11, (b) 2014 Jan 06 and (c) 2014 Sep 01. Vertical dashed lines indicate the type II times as given in Table 2. *Bottom panels:* same as the top panel but for energetic electrons in the 2.8 – 4.0 MeV energy band from HET on *STEREO-A* (red), *STEREO-B* (green) and in 2.64 – 10.4 MeV energy band from the EPHIN instrument on SOHO (blue).

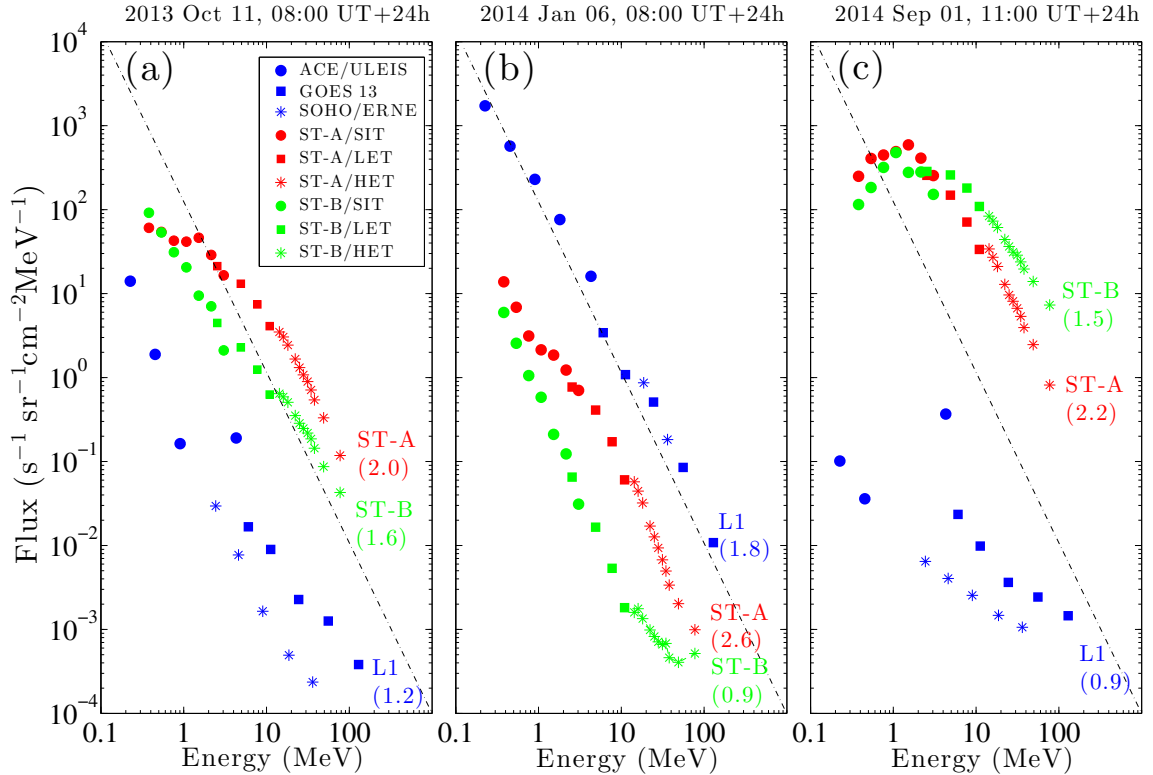


Fig. A.2. Proton spectra averaged over first 24 hours for the three events at three vantage points (L1 using blue color symbols, *STEREO-A* using red color symbols and *STEREO-B* using green color symbols). (a) 2013 Oct 11, (b) 2014 Jan 06, (c) 2014 Sep 01. The flux was averaged over the first 24 hours of the SEP event at *STEREO-A* and *STEREO-B* (SIT, LET and HET instruments) and L1 (ACE/ULEIS, GOES 13 and SOHO/ERNE instruments). Color coding for different vantage points is the same as in A.1. The thin dot-dashed oblique line indicates $\propto E^{-2}$ scaling.

and for the three events averaged over 24 hours after SEP onset (start at 08:00 UT, 08:00 UT and 11:00 UT for 2013 Oct 10 (a), 2014 Jan 06 (b) and 2014 Sep 01 (c), respectively). These spectra were generated using the on-line OMNIWeb tool that uses the interface developed by Natalia Papitashvili and Joe King³. The oblique dot-dashed lines indicate the power-law scaling of energetic particle flux as, $F_{SEP} \propto E^{-s}$ with index $s = 2$. The main observation from this Figure is that when the probes were well-connected to the flare site they measured a significant increase of the highest SEP flux between 10 MeV and 100 MeV and that the 2014 Sep 01 event produced much higher fluxes of SEPs than the two others. These well-connected vantage points were *STEREO-A* and *STEREO-B* for 2013 Oct 01 and 2014 Sep 01 events and at L1 for 2014 Jan 06 event. These probes measured SEP flux in 10-100 MeV energy band with spectral indices comprised between 1.5 and 2.2 as indicated in the figure by the values inside brackets, for measurements from near-Earth (blue), *STEREO-A* (red) and *STEREO-B* (green) spacecraft. It is close to the generic $s = 2$ value. Far connection probes had much lower levels of the average SEP flux and spectral indices can be steeper as well as harder than $s \simeq 2$. At lower energies < 2 MeV, for 2013 Oct 01 and 2014 Sep 01 events, we observe a plateau in particle fluence possibly due to the trapping of lower energy particles in the vicinity of the shock as a result of efficient wave amplification. This effect was also seen by Rouillard et al. (2012) in their study of the 2011 March 21 event.

A.2. Measurements from the Martian surface

Measurements from the Radiation Assessment Detector (RAD) onboard Martian ground rover Curiosity, i.e. Mars Science Laboratory (MSL) provide additional information on the longitudinal extent of the events that our model should be able to explain. Here we report on energetic particle events detection by RAD for the three studied events. Figure A.3 shows the energetic particle counts rate with the same time window as in Figure A.1. The times of the solar eruption and of the energetic particles onset are indicated by dashed vertical lines. Mars heliocentric distance was between 1.45 AU and 1.67 AU for the dates of the events. We note that RAD detector is sensitive to 1 – 1000MeV protons and 0.2–100MeV electrons but the counts from different energy bands and particle species are very technical to retrieve from the public data on the Planetary Data System depository. Here, we plot the “all included” energetic particle count rate. It is equivalent to the dose rate received by the detector. Bearing in mind that we do not distinguish between different particle species we assumed that first arriving particles were either the relativistic electrons or most energetic protons. While this procedure provides only limited information compared to the previously discussed 1 AU measurements, we use it here to illustrate the wide longitudinal spread of high particle fluxes measured in the inner heliosphere rapidly after the onset of the solar eruptions.

All three events were clearly detected on the martian surface even though Mars was not always well connected magnetically to the flare site. As illustrated in Figure 6, Mars was well connected to the eruption sites of the 2013 Oct 11 and 2014 Jan 06 events and was poorly connected on 2014 Sep 01 site (≥ 150 degrees away) (a,b,c). This is reflected in the relatively fast, 3–4 hours, rise times for the two well connected events and the much longer rise time of the 2014 September event.

It is interesting that the particle increases for the three events all started 30 minutes - 1 hour after the accompanying flares. This suggests that some particles had prompt access to the field lines reaching Mars even though the flare site might be over 100 degrees away. Our model can explain this surprising result as we will discuss later.

References

- Ackermann, M., Ajello, M., Albert, A., et al. 2012, ApJS, 203, 4
 Ackermann, M., Ajello, M., Albert, A., et al. 2014, ApJ, 787, 15
 Ackermann, M., Allafort, A., Baldini, L., et al. 2017, ApJ, 835, 219
 Ajello, M., Albert, A., Allafort, A., et al. 2014, ApJ, 789, 20
 Atwood, W. B., Abdo, A. A., Ackermann, M., et al. 2009, ApJ, 697, 1071
 Blandford, R., & Eichler, D. 1987, Phys. Rep., 154, 1
 Caprioli, D., & Spitkovsky, A. 2014, ApJ, 783, 91
 Cliver, E. W., Kahler, S. W., & Vestrand, W. T. 1993, International Cosmic Ray Conference, 3, 91
 Giacalone, J. 2005, ApJ, 624, 765
 Gopalswamy, N. 2003, Geophys. Res. Lett., 30, 8013
 Hassler, D. M., Zeitlin, C., Wimmer-Schweingruber, R. F., et al. 2014, Science, 343, 1244797
 Hurford, G. J., Schwartz, R. A., Krucker, S., et al. 2003, ApJ, 595, L77
 Kaiser, M. L., Kucera, T. A., Davila, J. M., et al. 2008, Space Sci. Rev., 136, 5
 Kanbach, G., Bertsch, D. L., Fichtel, C. E., et al. 1993, A&AS, 97, 349
 Lario, D., Raouafi, N. E., Kwon, R.-Y., et al. 2014, ApJ, 797, 8
 Lemen, J. R., Title, A. M., Akin, D. J., et al. 2012, Sol. Phys., 275, 17
 Lin, R. P., Dennis, B. R., Hurford, G. J., et al. 2002, Sol. Phys., 210, 3
 Lionello, R., Linker, J. A., & Mikić, Z. 2009, ApJ, 690, 902
 Marcowith, A., Bret, A., Bykov, A., et al. 2016, Reports on Progress in Physics, 79, 046901
 Mewaldt, R. A., Cohen, C. M. S., Giacalone, J., et al. 2008, American Institute of Physics Conference Series, 1039, 111
 Morlino, G., & Caprioli, D. 2012, A&A, 538, A81
 Möstl, C., Rollett, T., Frahm, R. A., et al. 2015, Nature Communications, 6, 7135
 Ng, C. K., & Reames, D. V. 2008, ApJ, 686, L123
 Patsourakos, S., & Vourlidas, A. 2009, ApJ, 700, L182
 Pesce-Rollins, M., Omodei, N., Petrosian, V., et al. 2015, ApJ, 805, L15
 Pesce-Rollins, M., Omodei, N., Petrosian, V., et al. 2015, arXiv:1507.04303
 Reames, D. V. 1999, Space Sci. Rev., 90, 413
 Rouillard, A. P., Sheeley, N. R., Tylka, A., et al. 2012, ApJ, 752, 44
 Rouillard, A. P., Plotnikov, I., Pinto, R. F., et al. 2016, ApJ, 833, 45
 Ryan, J. M. 2000, Space Sci. Rev., 93, 581
 Scherrer, P. H., Schou, J., Bush, R. I., et al. 2012, Sol. Phys., 275, 207
 Schlemm, C. E., Starr, R. D., Ho, G. C., et al. 2007, Space Sci. Rev., 131, 393
 Schrijver, C. J., & De Rosa, M. L. 2003, Sol. Phys., 212, 165
 Thakur, N., Gopalswamy, N., Xie, H., et al. 2014, ApJ, 790, L13
 Vilmer, N., & MacKinnon, A. L. 2003, Energy Conversion and Particle Acceleration in the Solar Corona, 612, 127
 Vilmer, N., MacKinnon, A. L., Trotter, G., & Barat, C. 2003, A&A, 412, 865
 Vilmer, N., MacKinnon, A. L., & Hurford, G. J. 2011, Space Sci. Rev., 159, 167
 Vourlidas, A., & Ontiveros, V. 2009, American Institute of Physics Conference Series, 1183, 139
 Wang, Y.-M., & Sheeley, N. R., Jr. 1992, ApJ, 392, 310

³ Tool available at
 : http://omniweb.gsfc.nasa.gov/ftpbrowser/flux_spectr_m1.html

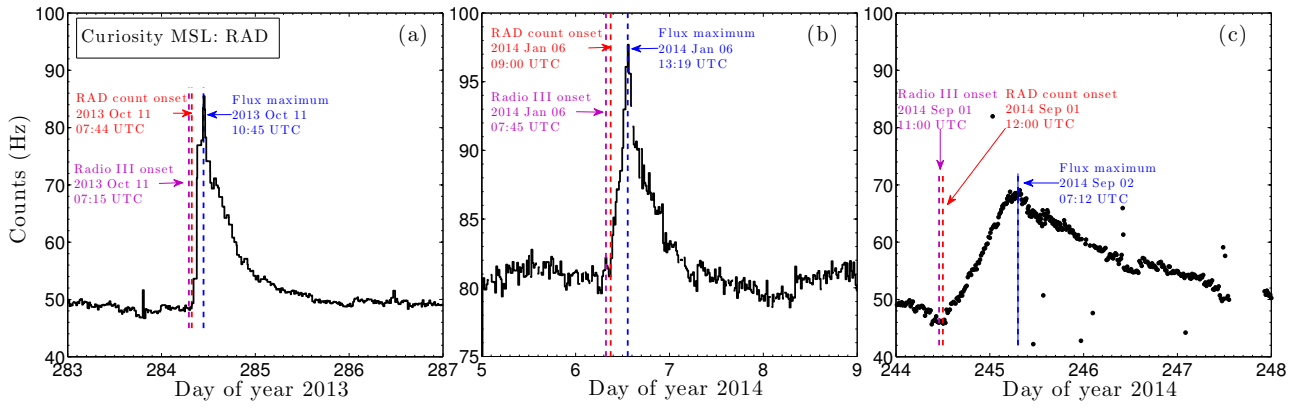


Fig. A.3. Time series of the counts of energetic particles per second by the RAD instrument on the Mars Science Laboratory's Curiosity Rover for the three events: (a) 2013 Oct 11, (b) 2014 Jan 06 and (c) 2014 Sep 01. Solar radio type III time, particle counts onset time and the time of the peak flux are indicated by the magenta, red and blue vertical dashed lines, respectively.