

Coronal Shock Waves, EUV Waves, and Their Relation to CMEs. I. Reconciliation of “EIT Waves”, Type II Radio Bursts, and Leading Edges of CMEs

V.V. Grechnev · A.M. Uralov · I.M. Chertok ·
I.V. Kuzmenko · A.N. Afanasyev · N.S. Meshalkina ·
S.S. Kalashnikov · Y. Kubo

Received: 22 November 2010 / Accepted: 19 April 2011 / Published online: 7 June 2011
© Springer Science+Business Media B.V. 2011

Abstract We show examples of the excitation of coronal waves by flare-related abrupt eruptions of magnetic rope structures. The waves presumably rapidly steepened into shocks and freely propagated afterwards like decelerating blast waves that showed up as Moreton waves and EUV waves. We propose a simple quantitative description for such shock waves to reconcile their observed propagation with drift rates of metric type II bursts and kinematics of leading edges of coronal mass ejections (CMEs). Taking account of different plasma density falloffs for propagation of a wave up and along the solar surface, we demonstrate a close correspondence between drift rates of type II bursts and speeds of EUV waves, Moreton waves, and CMEs observed in a few previously studied events.

Energy Storage and Release through the Solar Activity Cycle – Models Meet Radio Observations
Guest Editors: Christophe Marqué and Alexander Nindos

Electronic supplementary material The online version of this article (doi:[10.1007/s11207-011-9780-z](https://doi.org/10.1007/s11207-011-9780-z)) contains supplementary material, which is available to authorized users.

V.V. Grechnev (✉) · A.M. Uralov · A.N. Afanasyev · N.S. Meshalkina · S.S. Kalashnikov
Institute of Solar-Terrestrial Physics SB RAS, Lermontov St. 126A, Irkutsk 664033, Russia
e-mail: grechnev@iszf.irk.ru

I.M. Chertok
Pushkov Institute of Terrestrial Magnetism, Ionosphere and Radio Wave Propagation (IZMIRAN),
Troitsk, Moscow Region 142190, Russia
e-mail: ichertok@izmiran.ru

I.V. Kuzmenko
Ussuriysk Astrophysical Observatory, Solnechnaya St. 21, Primorsky Krai, Gornotaezhnoe 692533,
Russia
e-mail: kuzmenko_irina@mail.ru

Y. Kubo
National Institute of Information and Communications Technology, Tokyo, Japan
e-mail: kubo@nict.go.jp

Keywords Coronal mass ejections, low coronal signatures · Coronal mass ejections, initiation and propagation · Prominences, active · Radio bursts, dynamic spectrum · Radio bursts, type II · Waves, shock

1. Introduction

Some solar eruptions are accompanied by large-scale wave-like disturbances visible in various spectral ranges. Moreton waves (Moreton, 1960) observed in the $H\alpha$ line have been initially proposed by Uchida (1968) to be a chromospheric trail of a coronal fast-mode MHD wave. Observations of the low corona in extreme ultraviolet (EUV) with EIT (Delaboudinière *et al.*, 1995) on SOHO revealed large-scale wave-like disturbances visible as fronts of enhanced (but still low) brightness, either quasi-stationary or propagating over large distances up to the whole disk along the solar surface or expanding above the limb. These transients called “EIT waves” (or “EUV waves”) are registered by a number of EUV telescopes – EIT, TRACE, STEREO/EUVI, SDO/AIA, *etc.* (see reviews by Warmuth, 2007; Wills-Davey and Attrill, 2009; Gallagher and Long, 2010).

Analysis of observations and interpretation of such phenomena meet problems. Glaring flare emission hampers detection of faint EUV waves. Having been acquired with SOHO/EIT, the bulk of the observational material is limited by 12-min imaging rate. Faster TRACE observations (Handy *et al.*, 1999) have a small field of view. It is often difficult to reliably identify and trace a moving feature of interest. To overcome these difficulties, special methods are employed, but they might contribute artifacts. Multi-instrument analyses sometimes encounter timing problems. Thus, some results used in interpretation and modeling might not be completely adequate to the observed phenomena.

The nature of EUV waves has been debated starting from their discovery (Thompson *et al.*, 1998). The most popular interpretations of a near-surface EUV wave are *i*) traces of an MHD fast-mode wave in the lower corona (see, *e.g.*, Thompson *et al.*, 1999; Warmuth *et al.*, 2001, 2004b; Khan and Aurass, 2002; Hudson and Warmuth, 2004) and *ii*) plasma compression in bases of coronal loops in their successive stretching by an expanding CME (see, *e.g.*, Delannée, 2000). A numerical 2D MHD simulation of a magnetic flux rope eruption (Chen, Fang, and Shibata, 2005) revealed both the *i*) and *ii*) disturbances. Schmidt and Ofman (2010) presented the first 3D MHD modeling of an “EIT wave” as a disturbance produced by an eruption-driven shock wave. A fast-mode wave detected in the simulation corresponded to an EUV wave observed in the modeled event including reflection from a coronal hole in support of the wave hypothesis.

None of existing models describes all properties of EUV waves. Most likely, this is because the multitude of transients observed as EUV waves actually correspond to different phenomena. This conjecture is supported by a variety of morphologic and dynamic characteristics of observed EUV waves. For example, *i*) their velocities estimated from observations of some events exceeded the coronal fast-mode speed, whereas they were lower in other events (Wills-Davey, DeForest, and Stenflo, 2007; Warmuth, 2010); *ii*) the wave front can be either diffuse or sharp; *iii*) kinematics of an EUV wave can be incompatible with the fast-mode MHD wave model (Zhukov, Rodriguez, and de Patoul, 2009). On the other hand, such properties of EUV waves as deceleration, decay, and broadening the disturbance (Warmuth *et al.*, 2001, 2004a, 2004b; Long *et al.*, 2008; Veronig *et al.*, 2010), bypassing regions of an increased Alfvén velocity – coronal holes and active regions (Thompson *et al.*, 1999), possible reflections (Veronig, Temmer, and Vršnak, 2008; Gopalswamy *et al.*, 2009) appear to correspond to the hypothesis of a coronal MHD

wave. Considerations of wave-like transients sometimes observed in EUV to expand above the limb also suggest that different phenomena might be involved (see, *e.g.*, Zhukov and Auchère, 2004; Grechnev *et al.*, 2006b, 2008; Pohjolainen, Hori, and Sakurai, 2008; Meshalkina *et al.*, 2009; Chertok, Grechnev, and Uralov, 2009; Cohen *et al.*, 2009). In Paper III (Grechnev *et al.*, 2011) we consider an event with a two-component “EIT wave”; a propagating component matched properties of a coronal shock wave, while a stationary component was presumably associated with a stretched CME structure.

If some EUV waves are really due to coronal shock waves, then their correspondence with signatures of shocks in higher corona is expected. Type II radio bursts are considered as manifestations of shock waves propagating upwards in the corona (see, *e.g.*, Vršnak and Cliver, 2008). Klassen *et al.* (2000) concluded that almost all metric type II bursts were accompanied by EUV waves but stated no correlation between their speeds; on average, the speeds of EUV waves were three times less than estimates from drift rates of type II bursts. Biesecker *et al.* (2002) found that many EUV waves were not associated with type II bursts.

Sheeley, Hakala, and Wang (2000) proposed that kinks or deflections of coronal rays at the flanks and rear ends of fast CMEs could be signatures of shock waves. An important common property of these flank/rear kinks was their deceleration, while the authors did not reveal deceleration of CME leading edges.¹ A scenario usually considered for the formation of shock waves, which might show up in LASCO images, seems to be incompatible with wave signatures on the solar surface. In this scenario, when the CME speed exceeds the local fast-mode speed at heliocentric distances $\gtrsim 1.5R_{\odot}$, a bow shock forms continuously pressed by a fast CME. However, a bow shock followed by a Mach cone can only be formed by a supersonic body of a fixed size, whereas CMEs expand omnidirectionally (with respect to their center). Hence, the conic bow-shock geometry appears to be unlikely for wide CMEs. Since neither mechanisms nor heights of the shock formation have been established, possible association between surface EUV waves and CME components cannot be excluded. Indeed, Veronig *et al.* (2010) found the upper part of an expanding EUV dome to coincide with a white-light CME, while the lower skirt of the dome was a surface EUV wave.

For these reasons it is difficult to expect that all observed properties of EUV waves could be explained by a single mechanism. Based on this assumption, our three companion papers are focused on those EUV waves, which are most likely associated with coronal shock waves. We address a few events, all of which were previously studied. Even for a rather uniform subset of phenomena probably corresponding to similar processes, apparent contradictions between some observational facts might occur. We endeavor to reconcile such discrepancies.

One of challenging issues is reconciliation of EUV wave velocities and drift rates of type II bursts. This is a subject of the present Paper I, the first one of the three companion papers. Assuming a shock-wave nature of the EUV waves under consideration, we try to settle disagreement between different studies. In this paper we use the simplest approximation of a self-similar shock wave that is convenient in comparisons with observations, which often show self-similarity of the wave front expansion. However, this approximation corresponds to the strong shock-wave limit and cannot apply to all stages of events. A weaker shock seems to be more realistic, but its calculations are more complex. Propagation of a weak shock along the solar surface is analytically modeled in Paper II (Afanasyev and Uralov, 2011). Paper III analyzes propagation of a probable shock wave in the 17 January 2010 event using both strong and weak shock approximations.

¹The SOHO LASCO CME Catalog at http://cdaw.gsfc.nasa.gov/CME_list/ (afterwards ‘the CME Catalog’; Yashiro *et al.*, 2004) shows pronounced decelerations for three of the four events considered by the authors.

2. Methodical Issues

Appearance of shock waves in eruptive events seems to be generally accepted, but their sources have not been established. Three possible exciters of shock waves are considered:

- i)* a pressure pulse produced by a flare,
- ii)* a super-Alfvénic piston, and
- iii)* an impulsive piston.

In case *ii)*, a bow shock continuously driven by a supersonic CME is expected to appear with kinematics determined by the driver. In case *i)* or *iii)*, the shock wave expelled by an impulsive driver propagates afterwards freely like a decelerating blast wave (*cf.* Pomoell, Vainio, and Kissmann, 2008). Observations suggest that shock waves excited by impulsive drivers and freely propagating in the low corona do exist. This is indicated by deceleration of Moreton/EUV waves (see, *e.g.*, Warmuth *et al.*, 2001, 2004a), differences between propagation directions of the wave and a possible driver (Hudson *et al.*, 2003), and very early appearance of type II bursts. We accept this possibility as a working hypothesis and use a description of propagation of a blast shock wave. It is possible to calculate it analytically for two limits. One limit is a strong self-similar wave, whose length along a propagation direction is comparable with the curvature radius of the wave front. The opposite limit is a weak shock wave, whose length is much less than the curvature radius of the front and a typical size of inhomogeneities in the medium. Grechnev *et al.* (2008) found that a formal usage of expressions for propagation of a strong self-similar shock wave excited by a point-like explosion in a gas allowed to fit the speeds and positions of a Moreton wave as well as an EUV wave at the initial stage of the motion.

2.1. Self-similar Shock Wave Approximation

Grechnev *et al.* (2008) used a simple model to describe propagation of such a blast-like wave in plasma with a radial power-law (PL) density falloff δ from an eruption center, $n = n_0(x/h_0)^{-\delta}$ with x being the distance and n_0 the density at a distance of h_0 . We use $h_0 \approx 100$ Mm, close to the scale height. (Our notations are different from those used in the papers listed above). Self-similarity of a shock wave is ensured by a presumable large pressure excess inside the volume confined by the shock front over a non-disturbed medium. Propagation of a shock wave in the self-similar approximation is determined by plasma density distribution being almost insensitive to the magnetic fields. Such a wave decelerates when $\delta < 3$ due to a growing mass of swept-up material. Propagation of a strong shock vs. time t in plasma with a PL density model is described by an expression

$$x(t) \propto t^{2/(5-\delta)}. \quad (1)$$

The approximation has a singularity at $x \rightarrow 0$ (here also the wave velocity $v \rightarrow \infty$); however, wave signatures are not observed at small distances. The approximation becomes inaccurate at large distances, being not limited from below by the fast-mode speed. A wave traveling along the solar surface weakens at large distances and propagates, in the first approximation, in a flat-layered atmosphere. Expression (1) describes strong spherical shock waves, which seem to be unrealistic in solar conditions, but its usage within some range of distances can be justified.

- i)* An enhanced plasma density above an active region falls off both vertically and horizontally. A power-law description of the falloff seems to be acceptable.

- ii) The self-similar solution of a strong wave satisfactorily describes damping of a gas-dynamic shock wave up to Mach numbers $M \approx 2$, when the wave is neither strong nor weak.
- iii) Applicability of gas-dynamic self-similar solutions to MHD blast shock waves is not obvious, because account of the magnetic field seems to be necessary.

We note the following. With $M \gg 2$, the gas pressure behind the shock front exceeds the magnetic pressure, even if $\beta = C_S^2/V_A^2 \ll 1$ in non-disturbed plasma before the shock front; here M is a ratio of the shock speed to the fast-mode speed before the front, C_S and V_A are the sound and Alfvén speeds. That is, the plasma flow behind the shock front has a gas-dynamic character. The role of magnetic fields is also not crucial for medium-intensity shocks ($M \geq 2$), which also strongly heat plasma, thus significantly increasing its pressure. For example, with $M \approx 2$, the plasma pressure behind the front of a wave perpendicular to the magnetic field is equal to the magnetic pressure before the front, even if $\beta \ll 1$ there. For a switch-on shock wave running along the magnetic field this occurs with a Mach number $M \approx 1.5$.

Expression (1) was obtained under an assumption that the δ index was independent of the wave propagation direction ϑ . We will formally use this expression also when $\delta = \delta(\vartheta)$, if variations of δ are small with the change of the direction, *i.e.*, $\pi d\delta \ll d\vartheta$. Note that in a limit of a weak, short shock wave, its propagation is determined by a local value of δ even if this condition is not satisfied. The above considerations lead to a heuristic conclusion about a possibility to use expression (1) for approximate estimates of kinematic characteristics of shock waves of intermediate intensity propagating in medium with $\delta = \delta(\vartheta)$.

It is useful to compare the power-law coronal density model with other popular models. The Newkirk (1961) model ($n_e = 4.2 \times 10^4 \times 10^{4.32/r}$, r is the heliocentric distance expressed in solar radii) describes the radial plasma density distribution in a coronal streamer. The Saito model (Saito, 1970) describes the density distribution above the quiet Sun depending on the latitude ϕ

$$\frac{n_e(r, \phi)}{10^8} = \frac{3.09}{r^{16}}(1 - 0.5 \sin \phi) + \frac{1.58}{r^6}(1 - 0.95 \sin \phi) + \frac{0.0251}{r^{2.5}}(1 - \sin^{0.5} \phi). \quad (2)$$

Figure 1a presents the Saito model for $\phi = 0^\circ, 60^\circ$, and the Newkirk model. The PL model can be adjusted to any of these models by varying its parameters. The n_0, h_0 parameters are redundant; we have split them to clarify their physical meaning. The x variable in the radial direction is $x \approx (r - 1)R_\odot$. The PL model with $\delta = 2, n_0 = 2.8 \times 10^8 \text{ cm}^{-3}$ agrees within $\pm 30\%$ with the Newkirk model at $r = (1.2 - 9)R_\odot$, which is important in analyses of type II bursts. The parameters of the PL model can be adjusted to the Saito model for various ϕ as well, which is important in analyses of CMEs. A single PL model with a direction-dependent δ provides a convenient alternative to complex involvement of various density models and allows one to account for individual properties of active regions as well as highly disturbed conditions just before the onset of a wave.

2.2. Shock Waves and Type II Bursts

Assuming δ to depend on a propagation direction, we get an approximation for a shock of an intermediate intensity propagating in an anisotropic medium (Figure 1b). A quasi-isotropic shock wave propagating in homogeneous corona can only cause drifting continuum radio emission. A strong narrowband harmonic type II burst can appear if the shock front passes along a lengthy structure like a coronal streamer (see, *e.g.*, Reiner *et al.*, 2003; Mancuso

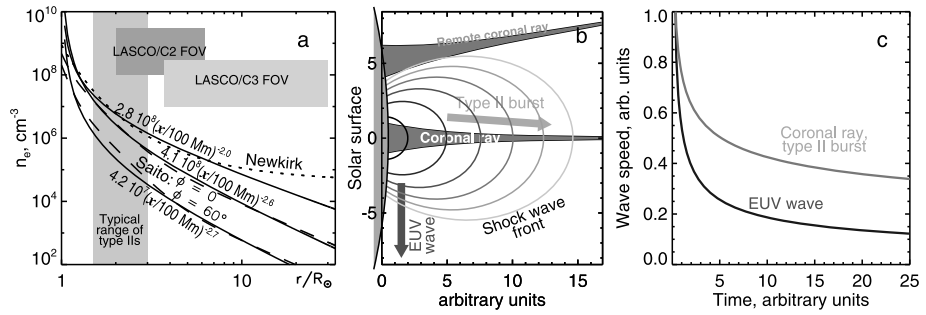


Figure 1 (a) Coronal density models of Newkirk (dotted) and Saito (dashed, for latitudes $\phi = 0^\circ$ and $\phi = 60^\circ$). The solid lines represent the power-law model with different parameters to fit the Newkirk model at $r < 9R_\odot$ and the Saito model within the LASCO/C2 & C3 fields of view shown with horizontal shaded bars. The vertical shaded region indicates the typical range of metrics type II bursts. (b) A cartoon illustrating the relation between a type II burst and an EUV wave. A narrowband type II emission is generated by a shock front propagating in a distinct extended narrow structure like a coronal ray. A near-surface EUV wave runs slower. (c) Speed–time plots of the EUV wave and the type II emission site.

and Raymond, 2004). The cumulation effect increases the density jump in the vicinity of the streamer’s current sheet and intensifies radio emission (Uchida, 1974). The situation resembles a flare process running along a coronal ray (Uralova and Uralov, 1994). The difference between the horizontal and vertical directions explains a relation between the speeds of an EUV wave and a type II burst (Figure 1c). The upwards speed is higher than the surface one, because the wave center rises.

Even if a shock wave appears at a zero height, its front rapidly becomes convex and tilted toward the solar surface (Figure 1b). This front shape has actually been observed by Hudson *et al.* (2003) and is consistent with observations discussed by Warmuth *et al.* (2004b). If a convex shock front encounters a remote coronal ray, then the intersection site bifurcates, and its parts move along the ray in opposite directions (*cf.* Mancuso and Abbo, 2004). The contact corresponds to an infinite drift rate followed by bidirectional drifts to resemble a direct bracket “(” in a dynamic spectrum. Note that dynamic spectra present a combination of emissions originating at different sites, so that the intensities are summed.

In Section 3 we reconcile kinematics of “EIT waves” and drift rates of corresponding type II bursts in terms of our approach based on the self-similar shock approximation (Section 2.1). We apply power-law curves with the same onset time to both spectral domains (hereafter ‘shock-PL fit’). The density falloff index in a streamer determining the drift rate of a type II burst is expected to be $\delta \sim 2$. Real lateral density falloffs in a streamer should be steeper than along its axis. Otherwise, streamers would not be visible in a homogeneous corona. Thus, real shock fronts should be oblate at medium distances. The density falloff for an EUV wave escaping from an active region can be $0 < \delta < 3$. For possible wave signatures in CMEs, the density falloff index is expected to be close to the Saito model (2), *i.e.*, $\delta \sim 2.6$ at moderate latitudes and steeper at higher latitudes.

2.3. Fit of Presumable Wave Signatures

We fit the drift rate of a type II burst manually. The onset time t_0 of a wave can be approximately estimated from observations. We take parameters of the plasma density model $n_0 = 5.5 \times 10^8 \text{ cm}^{-3}$, $h_0 = 100 \text{ Mm}$, and δ according to the considerations in the preceding section. One more input parameter is a reference frequency f_{obs} of a band with a harmonic

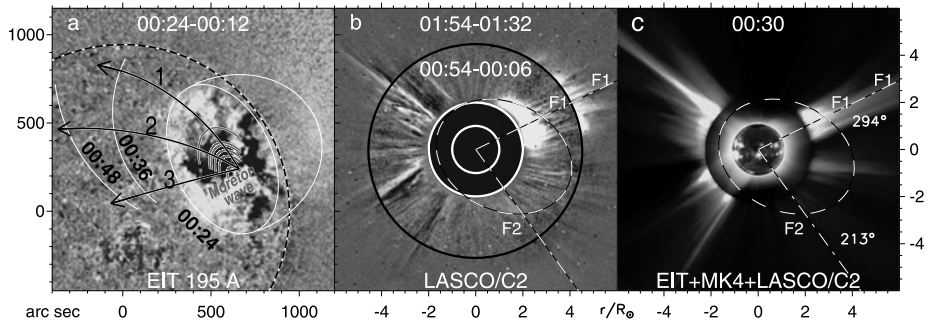


Figure 2 The 13 July 2004 event. (a) The Moreton wave (gray) and EUV wave (white) fronts superposed on the EIT 195 Å difference image. The black arcs 1, 2, and 3 trace the directions of measurements. The dotted circle denotes the limb. (b) The leading part of the CME observed in two LASCOC2 difference images at 00:54 and 01:54 separated with the black circle. (c) The non-disturbed corona in a combined image composed from non-subtracted EIT 195 Å, Mark4, and C2 images. The dashed ovals in (b) and (c) outline the CME in the 00:54 image. The dash-dotted straight lines in (b) and (c) mark the position angles at which the measurements listed in the CME Catalog were carried out for the fastest features F1 and F2. The axes show the distances from the solar disk center in arc seconds (a) and in solar radii (b and c).

number N_f (usually 1 or 2) actually observed in a dynamic spectrum at a time t_1 . The corresponding plasma number density is $n_1 = [f_{\text{obs}}(t_1)/N_f/(0.9 \times 10^4)]^2$, and the height is $x_1 = h_0(n_0/n_1)^{1/\delta}$. Then the height–time plot of the shock tracer is calculated as $x(t) = x_1 [(t - t_0)/(t_1 - t_0)]^{2/(5-\delta)}$, the corresponding density variation as $n(t) = n_0 [x(t)/h_0]^{-\delta}$, and the outline of both bands of the type II burst as $f(t) = [1, 2] \times 0.9 \times 10^4 [n(t)]^{1/2}$. By adjusting δ and t_0 in sequential attempts, we endeavor to approach a best outline of the bands. Uncertainties provided by the routine typically do not exceed 1 min for t_0 and 0.2 for δ . The spectrum can be coordinated with measured heights by adjusting n_0 , as usually done.

To fit presumable traces of shocks in coronagraph images (in this paper we use measurements from the CME Catalog), we employ two ways. The first way is a manual fit similar to the routine outlined in the preceding paragraph. Input parameters are starting estimates of δ and t_0 , the heliocentric distances of the wave origin r_0 and the wave front r_1 measured at a time t_1 . The initial approximation of the height–time plot is $r(t) = (r_1 - r_0)[(t - t_0)/(t_1 - t_0)]^{2/(5-\delta)} + r_0$. Then sequential attempts are made to approach a best fit. The second way employs a log–log height–time plot, which is a straight line for a power law. We use a second-order fit and iteratively vary δ and t_0 to minimize the second-order term. One should be aware of the fact that the major but unknown uncertainties can be due to identification of the wave front in coronagraph images.

3. Observations

3.1. Event 1: 13 July 2004

This event (Figure 2) was associated with an eruptive M6.7 flare (00:09–00:23, *all times hereafter are UT*) in active region 10646 (N13 W46) and a CME observed with SOHO/LASCO (Brueckner *et al.*, 1995) after 00:54. Two parts of the CME (Figure 2b, c) are listed in the CME Catalog as two CMEs measured at position angles (PA) of 294° and 213°. A type II burst was recorded in three observatories. The three estimates of the shock speed progressively decreased in time.

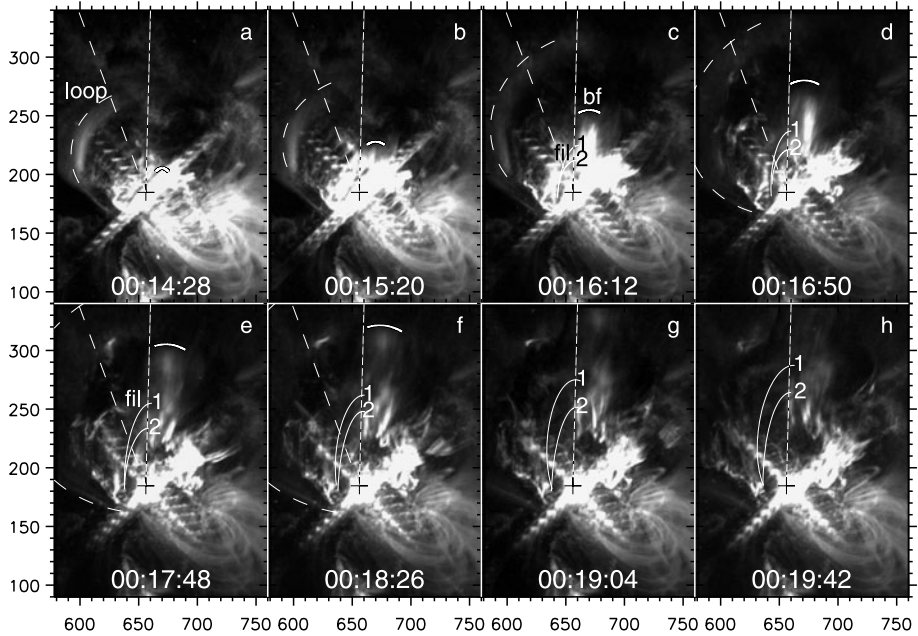


Figure 3 The eruptive system in the 13 July 2004 event (TRACE, 173 Å). The cross marks the initial position of the filament. Oval arcs outline the eruptive loop (dashed), filaments (solid), and bright feature (short arc). The broken lines denote the expansion directions of the loop (dashed) and the filament (dotted). Axes show arc seconds from the solar disk center.

Grechnev *et al.* (2008) revealed signatures of a probable blast wave as an H α Moreton wave (gray in Figure 2a) and an EUV wave (white). Both disturbances were kinematically close to each other and to a kinematical curve expected for a lower trail of a decelerating coronal blast wave. Its exciter was not discussed. The authors proposed that the decreasing estimates of the shock speed reflected deceleration of a single shock wave, but they did not consider the type II burst.

Pohjolainen, Hori, and Sakurai (2008) [afterwards PHS] analyzed the type II burst in this event, but could not reconcile the overall drift with propagation of a single shock wave. The authors proposed that two shock waves were excited, one by a flare blast, and the second one by an expanding loop, a part of a CME.

We carried out an additional analysis of this event, measured kinematics of an eruptive system in order to find out a probable origin of a shock wave(s), and to reconcile its (their) propagation with the EUV/Moreton waves and the CME.

3.1.1. Eruptive System

Figure 3 shows the eruptive system: a leading bright feature ‘bf’, two filament segments ‘1’ and ‘2’, and several eruptive loops, of which one (‘loop’) was conspicuous and thus will be discussed henceforth. Long exposure times (33–46 s) caused a blurring of fast features, *e.g.*, a jet-like appearance of the bright feature.

To measure expansion of a feature, we outline it with an oval arc that allows us to trace it, even if its leading edge is difficult to detect. The obtained distance–time plot is used as a starting estimate. Then we choose a regular function to match the distance–time plot and

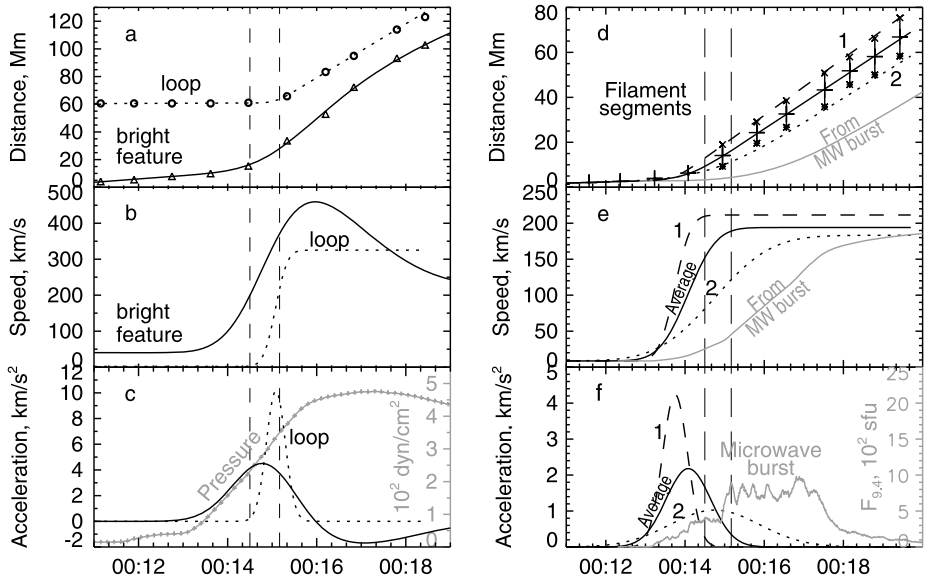


Figure 4 Kinematical plots of the eruptions in the 13 July 2004 event: the loop and bright feature (left) and the filament segments 1 and 2 (right; the solid curves correspond to averages between 1 and 2). Symbols mark the measured plane-of-sky distances, and curves represent their fit. The gray curve in panel (c) displays the plasma pressure computed from GOES SXR fluxes. The gray curves in panels (d–f) show kinematical plots calculated by assuming the correspondence of the acceleration plot to the microwave one. The vertical dashed lines delimit the start time of the wave estimated by Grechnev *et al.* (2008).

estimate its parameters. Using the analytic fit, we calculate expected distance–time points, compare them with observations, and improve the fit. All kinematical plots are calculated by means of integration or differentiation of the analytic fit rather than measurements. Our ultimate criterion is to reproduce the motion of an analyzed feature. Observational limitations do not allow us to reveal a detailed time profile of acceleration, and we describe it instead with a smooth bell-like function. We use a Gaussian time profile (see Wang, Zhang, and Shen, 2009). Then acceleration a is

$$a = (v_1 - v_0) \exp\left\{-\left[\frac{(t - t_0)^2}{\tau_{acc}^2}\right] / 2\right\} / (\sqrt{2\pi} \tau_{acc}). \tag{3}$$

Here $\tau_{acc} \sqrt{8 \ln 2}$ is a full width at half-maximum of the acceleration time profile, which is centered at the t_0 time; v_0 and v_1 are velocities at the onset and end of the acceleration stage. In cases of a more complex kinematics, we use a combination of Gaussians and adjust their parameters manually.

Uncertainties are mainly determined by difficulties to identify and trace a feature in question. For this purpose we use both non-subtracted and difference images processed in various ways and improve results in sequential attempts. The worst traceable feature in this event is the eruptive filament, which appears as a semitransparent dark feature, whose segments 1 and 2 are faintly visible in Figure 3. We therefore present the measurements of the filament in more detail.

The results of plane-of-sky measurements are shown in Figure 4 for the loop and bright feature (left) and for the filament segments (right). The dashed curve in Figure 4d was calculated from the dashed acceleration profile in Figure 4f to match an upper envelope of the

measured positions of segment 1. The dashed curve in Figure 4e is a corresponding velocity profile. The dotted curves in Figure 4d–f correspond to a lower envelope of the positions of segment 2. The black solid curves correspond to an average height–time plot. The horizontal bars show the exposure durations. We consider the maximum acceleration of the middle part of the filament to reach about 2 km s^{-2} (-60% , $+120\%$), and its probable speed and positions to be close to the solid black curves, being within the dotted and dashed boundaries. The bright feature and eruptive loop are visible much better, their leading edges are well defined, and therefore uncertainties of their positions are significantly less. The estimated height–time profiles match the measurements. The main uncertainty here is due to temporal undersampling, which is only crucial for the estimate of acceleration of the loop.

When the measurements began, the bright feature already rose that probably corresponded to the initiation phase, which started at about 00:07 according to soft X-ray (SXR) GOES data. A strong acceleration started at about 00:13, reached $\approx 4 \text{ km s}^{-2}$, and then changed to deceleration. The loop was static by 00:14:30; after 00:15:10 its speed sharply changed to $V_{\text{loop max}} \approx 320 \text{ km s}^{-1}$ and did not increase afterwards. The last measured point hints at a possible later deceleration. The transition from the initial zero speed to a final one occurred between two samples. Hence, the maximum acceleration of the loop could well exceed 10 km s^{-2} . All components of the corresponding CME decelerated (Grechnev *et al.*, 2008), so that the eruption resembled an explosion with a strong impulsive acceleration followed by continuous decreasing deceleration.

Figure 4c also shows the plasma pressure computed from SXR GOES fluxes and a source size of 15 Mm found from RHESSI (Lin *et al.*, 2002) images. The pressure gradually rose while the bright feature suddenly started to decelerate. Thus, the flare pressure was unlikely a driver of either the eruption or the wave, whose estimated start time is delimited with vertical dashed lines.

The filament started to rise nearly simultaneously with the bright feature. However, both the acceleration and speed of the bright feature were higher, and it surpassed the filament (see Figure 3). The nature of this feature is difficult to identify. In some images it resembles an arcade surrounding the filament, but initially it seems to be located below the filament. This feature might also be one more filament which brightened due to heating. An additional possibility is suggested by a scenario proposed by Meshalkina *et al.* (2009): this feature might be a small-scale magnetic rope whose eruption destabilized the filament.

The gray curves in Figure 4d–f show the kinematical plots calculated under the assumption that the acceleration plot corresponded to the 9.4 GHz light curve (Nobeyama Radio Polarimeters, Torii *et al.*, 1979; Nakajima *et al.*, 1985; <ftp://solar.nro.nao.ac.jp/pub/norp/xdr/>). Microwave bursts are known to be similar in shape to hard X-ray (HXR) ones, while accelerations of eruptions have been found to be temporally close to HXR bursts (see, *e.g.*, Temmer *et al.*, 2008). The kinematical plots calculated from the microwave burst lag behind the actual plots of the filament by about two minutes indicating that, most likely, the flare was caused by the eruption. This fact suggests that the eruptive filament accelerated almost independently of the flare reconnection rate and HXR emission, at least, in this event.

There are two options regarding a relation between the bright feature and the loop. One possibility is that ≈ 1.5 –2 minutes after the start of the acceleration of the bright feature, the loop suddenly and independently underwent much higher impulsive acceleration. Alternatively, the loop was expelled by a shock front that appears to be more probable. For the latter case, the strength of the shock can be estimated. The Mach number is $M = V_{\text{sh}}/V_{\text{fast}}$, where V_{sh} is the shock speed, and V_{fast} is the fast-mode speed. The shock speed V_{sh} at the onset of the loop motion can be roughly estimated from a PL fit (Grechnev *et al.*, 2008) to be about 1000 km s^{-1} , but it is rather uncertain because of insufficient temporal coverage by

TRACE images and their long exposure times. The fast-mode speed can be estimated from an expression $V_{\text{sh}} \approx V_{\text{fast}} + \kappa U_{\text{sh}}/2$, where κ is a coefficient determining the steepening rate of the wave front. This coefficient, $1/2 \leq \kappa \leq 3/2$, depends on plasma beta and the propagation direction. We take the speed of the loop as the gas speed behind the shock front, $U_{\text{sh}} = V_{\text{loop max}} \approx 320 \text{ km s}^{-1}$ (see Figure 4b). With these quantities and $\kappa \approx 3/2$ for the wave propagation perpendicular to the magnetic field in low-beta plasma, the Mach number is $M \approx 1.3$. One might suppose that the steepening time was about the interval between the peaks of the solid and dotted curves in Figure 4c corresponding to the acceleration profiles of the bright feature and the loop, *i.e.*, about 0.5 min.

We computed coronal magnetic fields from a SOHO/MDI magnetogram using an extrapolation package of Rudenko and Grechnev (1999) based on a potential approximation (Rudenko, 2001). The result showed that the eruptive loops were strongly tilted to the photosphere, and their tops were at a height of about 30 Mm. With a height of the pre-eruptive filament of > 10 Mm, the shock front hit the loop almost horizontally, and the estimated Mach number is related to the horizontal direction, while in the vertical direction the shock was probably stronger.

Thus, the loop itself was most likely passive, and its motion was driven by the shock wave. All observed products of the eruption monotonically decelerated starting from TRACE observations and up to LASCO/C3 ones. The loop therefore is unlikely to have excited the second shock wave, as PHS hypothesized.

3.1.2. Moreton/EUV Wave, Type II Burst, and CME

Grechnev *et al.* (2008) could not find out from kinematics if the leading edge of a coronal transient observed by LASCO (see Figure 2b) was a mass ejection or a trace of a wave. Comparison with a non-subtracted image of the corona before the CME in Figure 2c suggests its spiky leading fringe to be coronal rays deflected by a wave (pronounced for feature F1 at PA = 294°). Vourlidis *et al.* (2003) and Magdalenic *et al.* (2008) interpreted such phenomena as signatures of shocks. Assuming that the CME leading edge was due to the wave, we outlined the measurements from the CME Catalog with a shock-PL fit. The calculated curves with $\delta \approx 2.6$ corresponding to the Saito model agree with the measurements (Figure 5). The decreasing speeds computed from these height–time plots at distances corresponding to the LASCO/C2 and C3 fields of view agree with the linear-fit speeds estimated in the CME Catalog, while within the interval when the type II burst was observed the speeds are higher by a factor of 2–2.5.

Figure 6c shows a type II burst recorded by the HiRAS radio spectrograph and our shock-PL fit of both the fundamental and second-harmonic emission (solid lines). We use the density falloff index $\delta = 2.1$, which is close to the Newkirk model expected for a streamer. The interpretation of features QF1 and QF2 is open to question; their presence hinted PHS at two different shock waves. The dotted lines approximately reproduce the outline of PHS following the logic suggested by their Figures 4 and 6. They correspond to fixed velocities of the type II exciters. However, a flare blast wave proposed by the authors is expected to decelerate: our outline corresponds exactly to a freely propagating blast wave.

The solid shock-PL fit outlines the whole slowly drifting structure from the decimetric range up to the lowest frequency. A question remains about features QF1 and QF2. The former feature with an uncertain harmonic structure does not seem to favor the dotted outline relative to the solid one. The weaker QF2 feature, which PHS considered as the onset of the second type II burst, indeed seems to have a harmonic structure. Its shape in the higher-resolution spectrum recorded at the Learmonth station (US Air Force RSTN) resembling “(” outlined with a black arc suggests an encounter of a shock wave with a dense structure (see

Figure 5 (a) Measurements from the CME Catalog for the F1 and F2 CME components fitted with the shock-PL model, $\delta \approx 2.6$. The circle denotes the position of the off-limb EUV wave at 294°. (b) Speed–time plots corresponding to each fit. Linear-fit speeds are also specified. Shading denotes the interval in which the type II burst was observed.

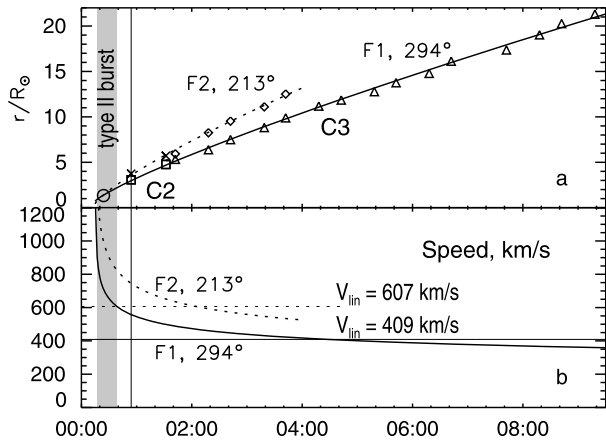
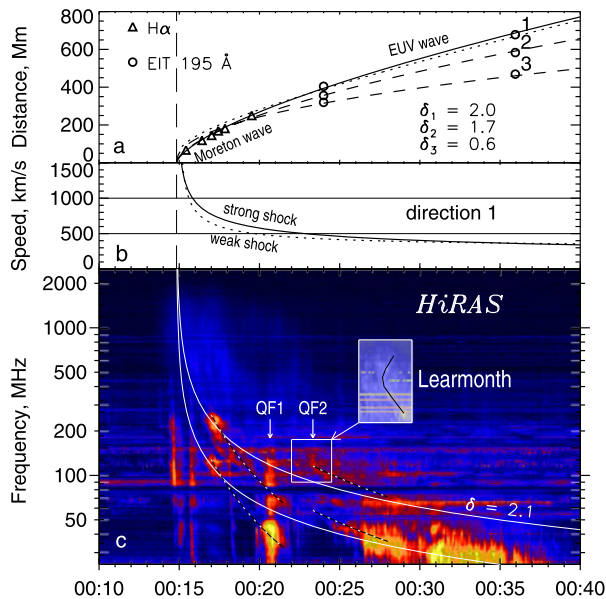


Figure 6 The 13 July 2004 event. Height–time (a) and velocity–time (b) plots of the Moreton and EUV waves, and (c) the fit of the type II burst ($\delta = 2.1$). QF1 and QF2 are features open to question. A reverse drift of QF2 is detectable in the inset which shows a portion of the dynamic spectrum recorded in Learmonth with a higher spectral resolution.



Section 2.2). These facts support association of the type II burst with a single decelerating shock wave. The drifting continuum, which PHS found to start at 00:13 (confirmed by the acceleration profile in Figure 4f), might be due to emission from outside of a pre-shock region expanding toward a decreasing density or, alternatively, from inside of the expanding region with a progressively depleting density, as PHS proposed. Compression of the environment in the pre-shock interval from 00:13 to about 00:14:50 might have produced an excessive plasma density, which we describe with a radial power-law falloff.

For comparison we show in Figure 6a the distance–time measurements of the Moreton wave (triangles) and the EUV wave (open circles) from Grechnev *et al.* (2008) along with shock-PL plots for the three directions 1, 2, and 3 denoted in Figure 2a, and the dotted plot of a spherical weak shock propagating in uniform plasma calculated by using expressions of Uralova and Uralov (1994). Figure 6b presents the speeds for the strong (solid) and weak

(dotted) shock approximations along direction 1. Both approximations are close to each other far from the eruption center ($r \gtrsim R_1 \approx 200$ Mm) being somewhat different at shorter distances. The shock wave propagating along the surface probably became weak at $r \gtrsim R_1$, when it left the active region and entered quiet-Sun areas where the coronal density and the fast-mode speed were nearly constant, *i.e.*, $\delta \rightarrow 0$. Closer to the eruption site ($r < R_1$), the plasma density presumably had a power-law falloff, and the shock was not weak. These conditions seem to favor the self-similar shock approximation, in which *i*) the shock propagation speed is proportional to its intensity and does not depend on the fast-mode speed, and *ii*) the wavelength is equal to the distance passed by the wave, *i.e.*, its duration increases. The density falloff of $\delta < 3$ within an active region and at its periphery corresponds to deceleration and damping of such a shock. The limit of a strong shock is a convenient idealization to describe the formation stage of a single shock wave, which propagates far from its source. A real forming shock wave does not seem to be so strong that the decrease of the fast-mode speed could be neglected when the shock leaves the active region. This issue is beyond our scope. We only note that formation of the shock discontinuity in a disturbance produced by an impulsive piston presumably brings to an end (and its intensity reaches maximum) in a region where the falloff of the fast-mode speed is steepest.

Note that deceleration of the EUV wave sweeping over the quiet solar area was stronger toward the equator, as comparison of the three fronts in Figure 2a for the 1–3 directions shows. This is expected for a strong shock, whose deceleration is determined by the density distribution, which is maximal at the equator (see the Saito model). This is also expected for a weak shock, whose propagation is governed by the Alfvén velocity decreasing toward the equator due to both the density distribution and the dipole magnetic field of the Sun.

Our analysis of Event 1 has revealed a probable excitation of a single wave by an impulsively accelerated eruption and steepening into a shock within one minute. Then the wave freely propagated like a decelerating blast wave and probably formed the leading edge of the CME. Our results are consistent with the conclusions of PHS about the role of a rapidly expanding eruption, formation of the shock wave at a very low altitude, and their estimates of the shock speed.

3.2. Event 2: 1 June 2002

Meshalkina *et al.* (2009) revealed a possible coronal shock wave presumably excited by a collision of an erupting magnetic rope with a magnetic obstacle in the 1 June 2002 event. An M1.5 flare (S19 E29) started at 03:50 and lasted only 11 min. SOHO/EIT carried out the ‘High cadence 195’ program, and LASCO did not observe at that time. Figure 7 shows an off-limb EUV wave in this event.

Figure 8a–f presents the eruption with extreme outlines (dotted and dashed) of its leading edge found from two sets of images processed in different ways. Figure 8g–i presents plane-of-sky measurements of kinematics using the same technique as for Event 1. The eruption accelerated up to ≈ 7 km s⁻² and then decelerated. The deceleration might be overestimated, because the eruption started to disintegrate and become transparent. Similarly to Event 1, acceleration occurred during the rise of the HXR burst recorded with RHESSI, while the plasma pressure gradually increased during the whole interval considered.

Figure 9 shows kinematics of the EUV wave (a, b) and the type II burst (c) similarly to Figure 6. To reveal the harmonic structure of the burst, we use again the record made in Learmonth (the inset). The burst consisted of two pairs of emission bands with frequency ratios in pairs of 2.0 and ≈ 1.5 between the pairs. The two pairs of bands resemble band-splitting usually interpreted as plasma radiation from the regions upstream and downstream of a shock. However, the relative split is atypically large for the metric range (Vršnak *et*

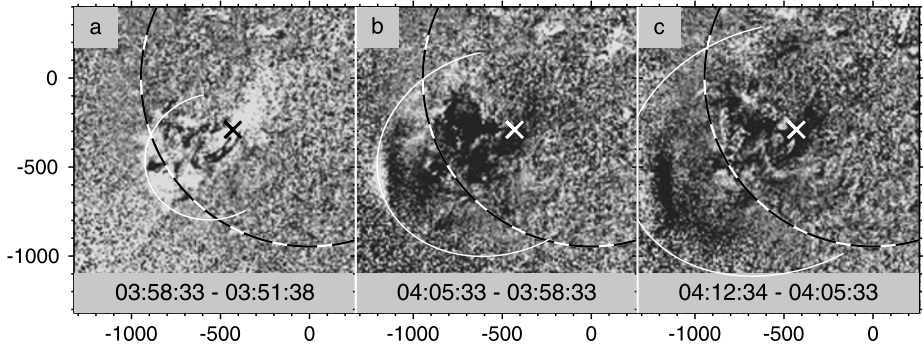


Figure 7 An EUV wave (outlined with ovals) on 1 June 2002 in EIT 195 Å running-difference images. The dashed circles denote the solar limb. The slanted cross marks the flare site.

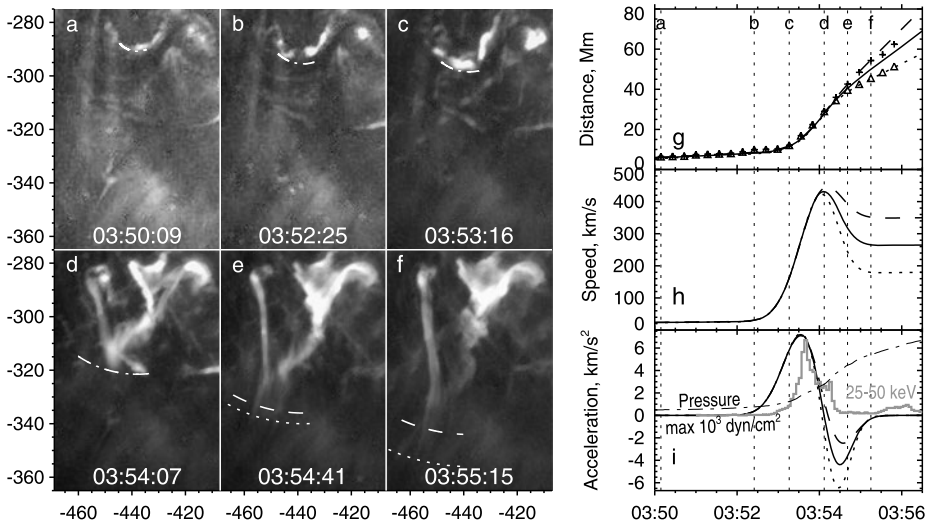
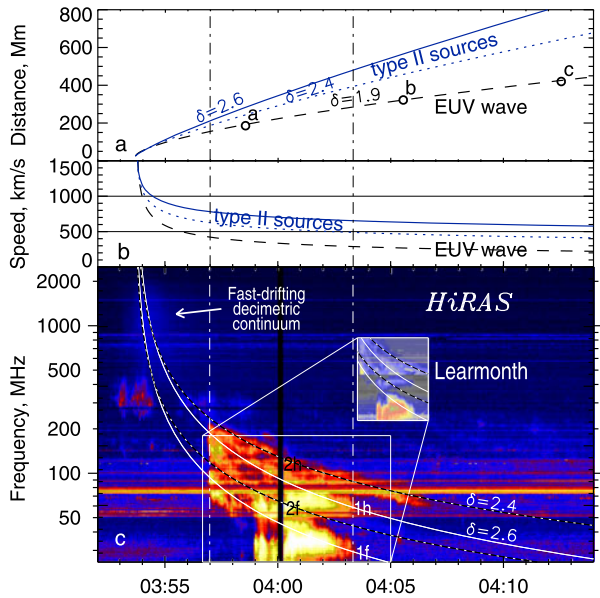


Figure 8 The eruption in TRACE 195 Å images (a–f) and its kinematics (g–i). The dotted and dashed lines correspond to extreme outlines of the eruption. Panel (i) also shows a 25–50 keV RHESSI time profile (gray) and the plasma pressure calculated from GOES data (dash-dotted). The vertical dotted lines mark the observation times of images a–f.

al., 2001). Alternatively, this situation suggests propagation of the shock front along two streamers located close to each other. We outline the burst structure with two harmonic pairs of power-laws 1 and 2 with ‘f’ indicating the fundamental emission and ‘h’ the second harmonic (twice the fundamental frequency). The difference in δ (2.4 and 2.6) might be due to differences of density falloffs in the streamers as well as different angles between the shock front and the axes of the streamers. The estimated wave onset time is 03:53:40, close to the acceleration peak time (Figure 8i).

Figure 9a shows height–time plots corresponding to the drift of the type II burst along with the EUV wave expansion. The type II emission was observed when its source was presumably located at heights from 190 Mm (heliocentric distance of $1.27R_{\odot}$) to 500–600 Mm [$(1.7–1.9)R_{\odot}$], *i.e.*, lower than usually assumed. Moreover, the outline of the shock front matches the fast-drifting decimetric continuum suggesting its relation to the shock

Figure 9 The 1 June 2002 event. Height–time (a) and velocity–time (b) plane-of-sky plots of the EUV wave (black) and the fit of the type II burst source (blue). Open circles in panel (a) represent the distances of the foremost wave fronts from the eruption center, and labels ‘a’–‘c’ correspond to the images in Figure 7. Panel (c) shows the dynamic spectrum with a shock-PL fit. The vertical broken lines delimit the interval of the type II burst.



wave, which presumably originated still lower. The type II burst probably started when the shock front reached the streamer and ceased due to deceleration and damping of the wave.

3.3. Event 3: 19 May 2007

This event associated with a B9.5 flare at 12:48–13:19 (N07 W06) and a fast CME has been well studied due to efforts of several researches mostly from observations made with EUV Imager (EUVI) of SECCHI complex (Howard *et al.*, 2008) on STEREO (Kaiser *et al.*, 2008). Nevertheless, some questions remain.

Long *et al.* (2008) measured kinematics of the EUV wave, found distinct deceleration, and stated that the low velocities of “EIT waves” could be due to their temporal undersampling. The observations were found to be consistent with an impulsively generated fast-mode magnetosonic wave or propagating MHD shock. However, they revealed an initial acceleration of the disturbance from a nearly zero speed. This mismatches the expected behavior of an MHD wave.

Veronig, Temmer, and Vršnak (2008) also found deceleration of this disturbance indicative of a freely propagating MHD wave and revealed a wave reflection at a coronal hole. They assumed that the wave was initiated by the CME, because the associated flare was very weak and occurred too late to account for the wave initiation. They also revealed two eruptions in close succession.

Gopalswamy *et al.* (2009) measured propagation of reflected wave fronts and considered the reflections as an argument in favor of a wave nature of EUV transients (see also Schmidt and Ofman, 2010). However, Attrill (2010) proposed that the reflections resulted from a misinterpretation of the running-difference data and suggested instead that two EUV wave fronts developed during the event. Indeed, running differences reliably show only the outer boundaries of expanding disturbances, while the inner picture reflects all the changes occurring between two images subjected to subtraction (Chertok and Grechnev, 2005).

To see whether or not the reflections actually occurred, we use a movie composed of non-subtracted 171 Å images of STEREO-A/EUVI (euvi_ahead_171.gif in the electronic version

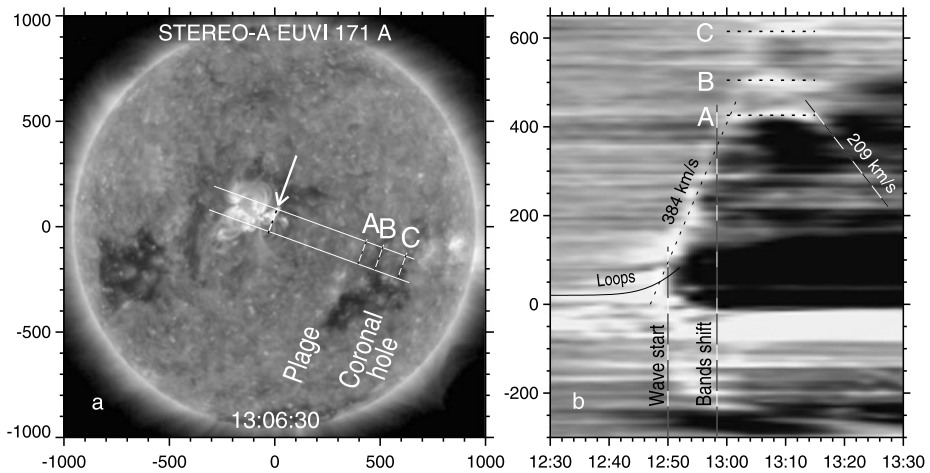


Figure 10 EUV wave observed with STEREO-A/EUVI at 171 Å on 19 May 2007. A set of spatial profiles (b) computed from ratio images within the strip contoured in panel (a). The arrow points at the origin of measurements. The A, B, and C broken bars in both panels mark the reflection positions. The slanted broken lines in panel (b) outline the steepest slopes.

of the paper). A backward motion suggesting a reflection is visible after 13:11 northeast from a plage region denoted in Figure 10a. We repeated the measurements of Gopalswamy *et al.* (2009), but without any subtraction. We only consider the first probable reflection in the direction exactly backwards, because it is difficult to reveal wave fronts in non-subtracted images of this complex event. Figure 10 corresponds to Figures 1 and 2 from their paper. To enhance the sensitivity, we use in panel (b) spatial profiles computed as the sums over the width of each slice extracted from an image as panel (a) shows. Each image was normalized to a pre-event image at 12:16:30 (fixed-base ratios).

Figure 10b shows that the plage region inflected after arrival of the wave front and then returned back. A backwards motion from plage A is faintly visible after 13:14. Region B exhibited a weaker bend. It is not clear from which region of A and B was the wave reflected. The latter seems to be preferable, because continuations of both the direct and reflected slanted traces intersect farther from region A, while a prolonged standing of the wave at region A is doubtful. The slanted broken lines represent the speeds found by Gopalswamy *et al.* (2009) and agree with the slopes in Figure 10b. Thus, the results of the authors were correct, at least, for the first reflection. The wave reflected backwards was considerably slower than the incident wave. This fact supports the shock-wave nature of the disturbance. Indeed, if an incident shock wave propagating with a velocity $V_{\text{inc sh}}$ encounters a semitransparent ‘wall’ like a coronal hole, then the shock reflected backwards is slower: $V_{\text{back sh}} \approx V_{\text{inc sh}} - V_{\text{gas}}$, where V_{gas} is a velocity of the gas trailing the incident shock front. V_{gas} can be up to the sound speed.

What does the accelerating part prior to 12:50 display? Figure 11 shows EUVI 171 Å images with subtraction and without it. The outermost boundary of the expanding bright feature coincides with the edge of coronal loops visible in the earlier non-subtracted images. Then eruptive loops rapidly lose brightness due to expansion and become invisible in non-subtracted images. We conclude that the accelerating part measured by Long *et al.* (2008) was related to the expanding loops, while the decelerating part was related to the wave. It is difficult to distinguish an appearing wave, which brightens, from a piston (loops), which

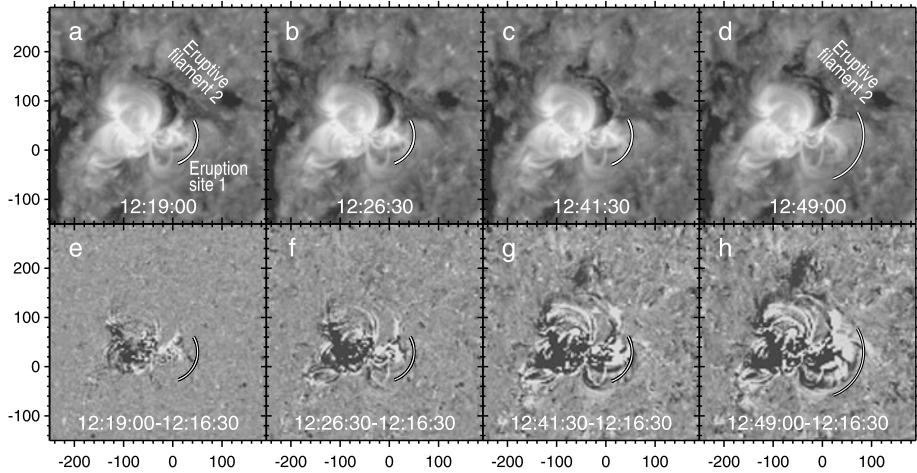


Figure 11 The first eruption on 19 May 2007 observed with STEREO-A/EUVI at 171 Å. Top: non-subtracted images, bottom: fixed-base differences. The arcs outline the foremost edge of the eruptive loop system according to the fit shown with the solid line in Figure 10b.

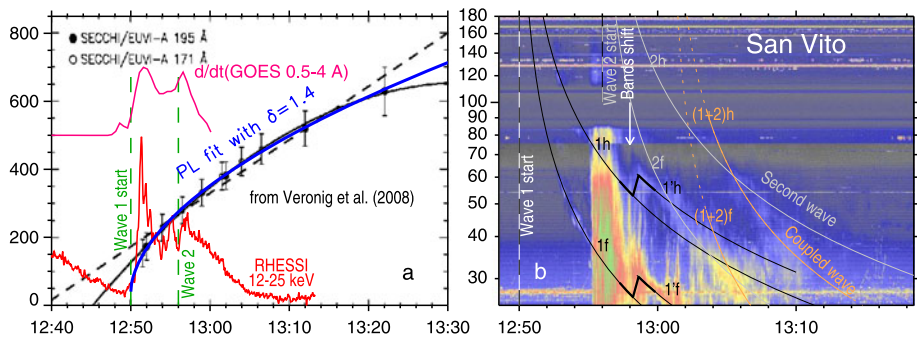


Figure 12 The 19 May 2007 event. (a) Propagation of the EUV wave measured by Veronig, Temmer, and Vršnak (2008, black) along with an HXR time profile (red), a derivative of the SXR flux (pink), and a shock-PL fit (blue). (b) Type II burst with shock-PL-fitted four pairs of bands. Paired bands are shown with the same colors. See details in the text.

becomes transparent. For this reason the acceleration of the loops is uncertain within 120–270 m s^{-2} ; the outline in Figures 10 and 11 corresponds to 260 m s^{-2} .

Figure 12a shows the measurements of the wave presented by Veronig, Temmer, and Vršnak (2008) and their shock-PL fit (thick blue curve). The wave start (12:50) corresponds to the early rise phase of the HXR burst (red, also from their paper). The power-law fit corresponds to the measurements of the authors better than their quadratic fit and the linear one. The eruption in this event also accelerated before the appearance of manifestations of flare reconnection.

The suggestion of Attrill (2010) about the second wave appears to be correct. The second eruption was probably triggered by the first one. Filament 2 activated at about 12:47 and erupted at 12:55–12:57 according to TRACE 173 Å images. The HXR time profile was complex, but two distinct episodes are detectable in the derivative of the SXR flux recorded

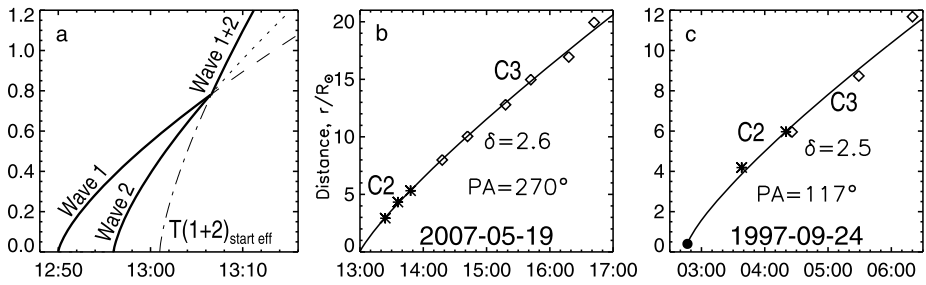


Figure 13 Coalescence of two shock waves (a) and height–time plots of CMEs observed on 19 May 2007 (b) and 24 September 1997 (c). Symbols present data from the CME Catalog, lines show their shock-PL fit. The filled circle in panel (c) denotes the origin of the wave.

with GOES (pink in Figure 12a). The onset times of the two waves were about 12:50 and 12:56.

A shock wave trailing a preceding one must reach the leading front due to properties of shock waves; the two shock waves coalesce to produce a single shock front (and a weak backwards disturbance, which we are not interested in). Its speed is less than the sum of the initial fronts’ speeds; however, the resulting shock is stronger and faster than either of the initial ones. So the slope of its distance–time plot is steeper than the initial waves had, and its virtual onset time is later than for either of the initial waves, as Figure 13a outlines.

Let us try to understand a complex dynamic spectrum in Figure 12b recorded in San Vito (USAF RSTN). A harmonic pair of weak bands 1f, 1h is sometimes detectable after 12:52. A strong type III burst at 12:55–12:58 probably associated with the second eruption partially blocked the weaker bands 1f, 1h. Two stronger type II bands 1’f, 1’h appeared at 12:58. Their appearance looks like an inverse-N-like shift of the initial bands to higher frequencies (thicker outline in Figure 12b). The initial bands 1f, 1h are still detectable sometimes. The outline of both these pairs of bands has the same start time of the first wave, 12:50. The appearance of the second pair might be due to the entrance of a part of the shock front into a dense region located rather high above plage A (see Figure 10a, b). The surface EUV wave reached plage A slightly later, as expected for a convex front tilted toward the solar surface (see Section 2.2).

The second shock front was probably manifest in weak bands 2f, 2h (pale, the start time is 12:56). The bands denoted (1 + 2)f and (1 + 2)h (orange outline) probably reveal the resulting shock with a virtual start time of 13:01. All of these bands overlap with others increasing the total emission at the intersections. We remind that various bands were most likely emitted from spatially different sites.

We have not revealed manifestations of the two merging shock waves in images or in the kinematical plot. This result could be expected due to different propagation conditions for a shock wave upwards and along the solar surface. The near-surface portion of a shock front decelerates stronger and experiences significant damping, thus becoming weak and approaching a linear disturbance. If the trailing shock wave succeeded to catch up or intersect with the leading one, the effect is expected to approach an interaction of linear disturbances, when two waves pass through each other experiencing interference, while the scheme in Figure 13a shows an essentially nonlinear effect.

The CME was fast (958 km s^{-1}) and decelerated. We assume that its leading edge was a trace of a wave and apply a shock-PL fit to the measurements in the CME Catalog at $PA = 270^\circ$ (Figure 13b). The onset corresponds to the virtual start time of the coupled shock wave,

and the density falloff corresponds to the Saito model. A trailing, poorly observed, CME at $PA = 310^\circ$ and probably related to the same event was considerably slower (294 km s^{-1}). Its deceleration might be due to the influence of the wave running ahead and problems of measurements.

Our analysis does not pretend to be perfect, but it shows that even such a complex dynamic spectrum can be reconciled with EUV observations and CME expansion under assumption of the shock-wave nature of related disturbances. Oversimplified considerations of such a complex event can be misleading. In particular, Yang and Chen (2010) concluded that the EUV wave in this event ran slower in regions of stronger magnetic field that seemed to be a challenge for the wave hypothesis. However, *i*) the authors considered the radial component of the magnetic field only, whereas the Alfvén speed depends on its magnitude. *ii*) By taking the range of the magnetic field strengths $\leq 0.6 \text{ G}$, for which Yang and Chen obtained anticorrelation with the EUV wave speed, and a density of $\gtrsim 2 \times 10^8 \text{ cm}^{-3}$ from the Saito model, one obtains $\beta = (2/\gamma)C_s^2/V_A^2 \gtrsim 4$, *i.e.*, the wave must be almost insensitive to the magnetic field. *iii*) The fronts in their Figure 4 stretch west-southwestward and become sharply pointed at 12:59, whereas Long *et al.* (2008), Veronig, Temmer, and Vršnak (2008), and Attrill (2010) showed the front to be blunt in this direction at that time. *iv*) Usage of the Huygens plotting to find trajectories of the wave front resulted in a strange picture of intermittently condensed and rarefied ray trajectories in their Figure 4. Thus, the results of Yang and Chen (2010) do not offer problems for the shock-wave hypothesis.

3.4. Event 4: 24 September 1997

This event was associated with a short M5.9 flare (02:43–02:52, S31 E19). An H α Moreton wave and EUV wave in this event were first analyzed by Thompson *et al.* (2000). Warmuth *et al.* (2004a, 2004b) found kinematical closeness of both wave fronts to each other and their deceleration. The first EUV wave front (Figure 14a) was sharp and bright suggesting that the main EUV-emitting layer was low. A difference ratio image (Figure 14b) reveals weak wave manifestations south, southwest, and slightly west from drawn by outline of Warmuth *et al.* (2004a). The third front in Figure 14c is close to their outline. Deceleration of the EUV wave was therefore even slightly stronger than the authors estimated.

White and Thompson (2005) analyzed wave signatures in microwave images at 17 GHz but did not reveal any deceleration. They also found that *i*) the speed of the microwave disturbance was 830 km s^{-1} against $\approx 500 \text{ km s}^{-1}$ estimated for the Moreton wave; *ii*) the brightness temperature at 17 GHz was about five times higher than an estimate from EIT data, and the discrepancy could be reduced if the kinetic temperature at 17 GHz would be different (preferentially higher) from the characteristic temperature of the 195 Å channel. The authors also concluded that the timing of images should be corrected by $\approx 100 \text{ s}$ for EIT and by $\sim 180 \text{ s}$ for H α to reconcile all observations. These facts indicate that the layers emitting microwaves and EUV were not identical. The higher speed, lesser deceleration, and higher brightness temperature (*i.e.*, column emission measure) observed at 17 GHz with respect to EUV hint at a possibly higher location of the microwave-emitting layer. Figure 15 shows our suggestion in panel (c); panel (a) presents the distance–time plots from both papers. The corrected times of EIT images (+99 s) and H α ones (+170 s) are indicated at the corresponding data points.

To reconcile kinematics of the microwave and EUV/H α wave fronts, we shift the White and Thompson data by 40 Mm and fit both data sets with the same onset time of 02:46:50 but different power-law exponents. Figure 15c explains the idea: the lower part of the front propagating in high-density regions decelerated stronger ($\delta \approx 2.3$ from Warmuth *et al.* measurements), while microwaves were dominated by long cross sections of the wave front

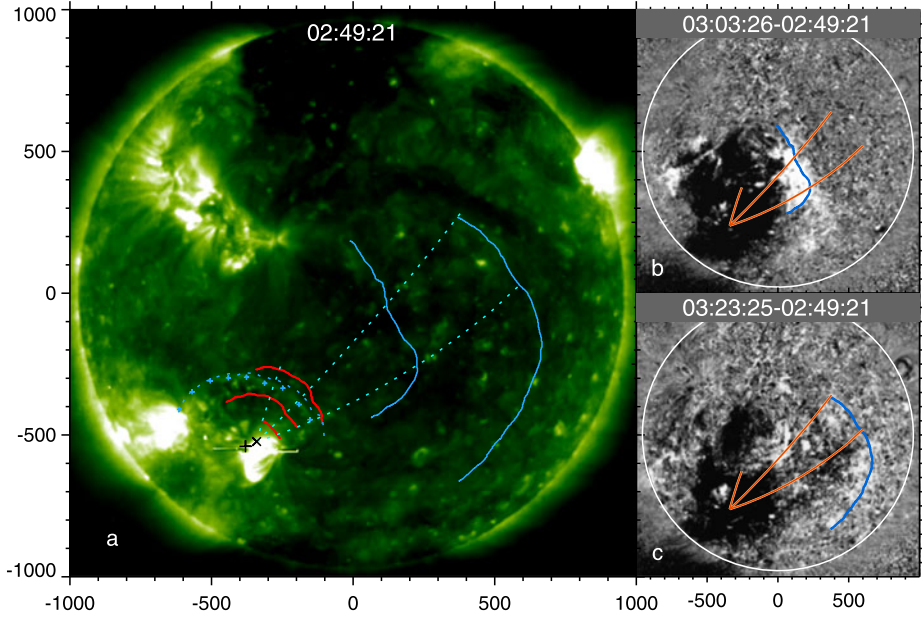


Figure 14 EUV wave (blue) and Moreton wave in the 24 September 1997 event. (a) Non-subtracted EIT 195 Å image with the first front (blue crosses). Blue dotted line outlines its foremost edge. Red fronts outline the Moreton wave. White broken lines trace the measurement great circles. Black crosses denote the origins of measurements. (b, c) Difference ratio images with blue outlines of EUV wave fronts and red measurement great circles. The outlines correspond to Warmuth *et al.* (2004a) (courtesy A. Warmuth).

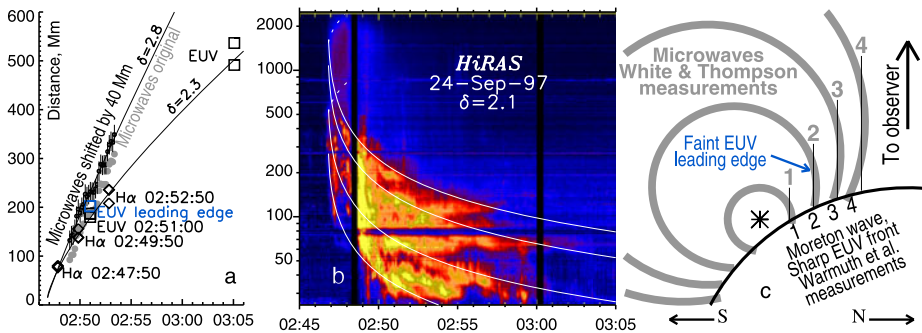


Figure 15 (a) Propagation of the EUV wave (squares) and Moreton wave (diamonds) measured by Warmuth *et al.* (2004a). Filled gray circles show the White and Thompson (2005) data, black open circles with error bars show them shifted by 40 Mm. Both data sets are outlined with shock-PL fit. (b) The HiRAS dynamic spectrum outlined with shock-PL fit and a negatively drifting continuum (dotted). (c) Presumable relation between the layers emitting microwaves and EUV/H α . Thin vertical lines show cross sections of the wave fronts of the largest column emission measure contributing at 17 GHz. The star is the origin of the wave.

(bars 1–4) running in lower-density regions, $\delta \approx 2.8$ (*cf.* Paper III). The large-height EUV wave’s leading edge detectable close to the eruption center diminished at large distances, where the EUV wave was almost exclusively due to response from low structures. The wave presumably appeared at a considerable height (the star). With a difference between the ori-

gins of measurements (black crosses in Figure 14a) of ≈ 32 Mm, our shift of 40 Mm, and spherical wave fronts, we get a height of 117 Mm. It seems to be overestimated; an estimate of about ≈ 75 Mm from the dynamic spectrum appears to be more plausible. Thus, the wave could be strongly anisotropic starting from its appearance, or the wave exciter was large, or both.

The complex dynamic spectrum in Figure 15b has a questionable harmonic structure, which is beyond our scope; we are only interested in the drift of the burst envelope. We have outlined presumable fundamental and second-harmonic bands. A possible higher-frequency band and the highest-frequency envelope of the burst are formally outlined as the fourth and sixth harmonics (this does not mean reality of emissions at such high harmonics). The outline corresponds to the initial height of 75 Mm, the same wave start time of 02:46:50, and $\delta \approx 2.1$ typical of streamers. A negatively drifting continuum (broken outline) at the initial stage indicates propagation of the shock front toward the chromosphere.

A poorly observed CME centered at 137° with a speed of 531 km s^{-1} was injected into a preceding CME. The CME Catalog estimates its acceleration to be positive with a remark about uncertainty. By adding the known origin of the wave (the filled circle in Figure 13c), we get a shock-PL fit of the measurements from the CME Catalog with an exponent $\delta \approx 2.5$ close to the Saito model.

Our considerations confirm the results of both Warmuth *et al.* (2004a) and White and Thompson (2005), reconcile them with each other and with the type II burst as well as the CME. Deceleration of the front portion detectable at 17 GHz was much less than its lowest part visible in EUV and H α had. It was not possible to reveal deceleration from microwave observations, which allowed detection of the wave within an interval as short as 4.5 min.

4. Discussion

TRACE observations of abrupt eruptions in events 1 and 2 have revealed plane-of-sky accelerations of magnetic rope structures of $4\text{--}7 \text{ km s}^{-2}$, *i.e.*, (15–25)-fold gravity acceleration. Then the eruptions in both events decelerated. Coronal waves appeared in events 1–3 approximately at the peak of acceleration. The onsets of the waves in all four events corresponded to the rise phases of HXR or microwave bursts (in event 4 according to White and Thompson, 2005). The wave in event 1 steepened into a shock within one minute and reached a Mach number of about 1.3 in a horizontal direction, while the upwards shock could be stronger. In the next section we consider which of known shock formation scenarios (see, *e.g.*, Vršnak and Cliver, 2008) appear to match the observations.

4.1. Comparison of Observations with Shock Formation Scenarios

A scenario of the shock formation by a flare pressure pulse is based on an idea that the β ratio of the plasma pressure to the magnetic pressure sharply changes from $\beta \ll 1$ to $\beta > 1$. Such a change of β is believed to be possible in a flare loop and considered as a cause of an omnidirectional disturbance. Dramatic changes of the volume of a loop or its abrupt motion are necessary to get a significant intensity of a wave excited in this way. Objections against this scenario do exist.

- i)* As Grechnev *et al.* (2006c) showed, the effect of a high β (even $\beta > 1$) in a flare loop is not dramatic, only results in an increase of all its dimensions by $\sqrt[4]{1 + \beta}$.
- ii)* The idea that a situation of $\beta \rightarrow 1$ can cause instability of a loop is not confirmed by observations. Ichimoto *et al.* (1993) and Grechnev *et al.* (2006a) showed that the $\beta < 1$ condition was not satisfied in long-lived hot coronal loops.

- iii) The flare pressures in events 1 and 2 rose gradually, without any signatures of the wave appearance.
- iv) RHESSI showed the SXR-emitting regions in events 1 and 2 to be fixed when the pressure increased.

Veronig, Temmer, and Vršnak (2008) concluded that the wave ignition in event 3 by the flare was unlikely. Thus, the theoretical considerations supported by the observational facts make the ignition of waves by flares doubtful in agreement with the conclusion of Cliver *et al.* (2004) (note that the authors implied the shocks to be driven by outer surfaces of CMEs, whereas we consider the shocks to appear inside CMEs).

This conclusion is seemingly opposed by the results of Magdalenic *et al.* (2008, 2010) who presented five events, in which shocks appeared during the flare impulsive phase, whereas related CMEs were slow. However, the authors did not consider a rare type of CME kinematics with very strong initial acceleration followed by deceleration. An example is our event 1 (Section 3.1, Figure 4). The acceleration stage in this event lasted three minutes. The fastest feature accelerated up to 470 km s^{-1} and continuously decelerated later on. From an overall height–time plot, including measurements from LASCO images, Grechnev *et al.* (2008) estimated the speed of this feature to approach 100 km s^{-1} far from the Sun. Nevertheless, the shock in this event was most likely excited just by this feature as an impulsive piston rather than by the flare. Thus, a slower motion of the main body of a CME well behind a shock front does not guarantee that the CME or its components were not implicated in excitation of the shock.

The maximum plane-of-sky speeds of the eruptions in events 1–3 appear to be well below the Alfvén speed expected at moderate heights ($< 100 \text{ Mm}$) above active regions (see, *e.g.*, Mann *et al.*, 2003), where the waves appeared. It is possible that the angles between the velocity vectors and the line of sight significantly differed from 90° , so that the real velocities could be higher, but the corresponding corrections are insufficient to increase the velocities above the Alfvén speed. The time profiles of the velocities estimated for the eruptions and waves were quite different. Thus, the bow-shock scenario is also unlikely.

4.2. Impulsive Piston Scenario

In the simplest scheme, a piston moving with a speed U has a box-like acceleration profile with a value a during the acceleration phase and zero before and afterwards. An important condition is that plasma cannot flow around the piston (this occurs, *e.g.*, in 3D expansion of an arcade). In a flat geometry and homogeneous medium the plasma flow ahead of the piston corresponds to a simple wave. The discontinuity appears at $t_{\text{sh}}^0 = V_{\text{fast}}/(\kappa a)$ at a distance $r_{\text{sh}}^0 = V_{\text{fast}} t_{\text{sh}}^0$ with $1/2 \leq \kappa \leq 3/2$ that is similar to a solution of an analogous gas-dynamic problem (Landau and Lifshitz, 1987). Then the speed jump in the discontinuity increases up to the piston's maximum speed U_{max} . The condition $U > V_{\text{fast}}$ essential for bow-shock formation is unnecessary in the impulsive piston scenario.

Accelerations and their durations before the wave onsets were (Section 3): 4 km s^{-2} and 90 s in event 1; 7 km s^{-2} and 70 s in event 2; $0.12\text{--}0.27 \text{ km s}^{-2}$ and 800 s in event 3. The stronger acceleration, the faster a shock appeared.

The shock waves in the four events were most likely excited by eruptive structures as impulsive pistons, which one might call the forming CMEs. Then the waves rapidly steepened into shocks, detached from the pistons, and freely propagated afterwards like blast waves. The shock excitation mechanism implies a source height to be nonzero, but rather low, probably $< 100 \text{ Mm}$, as suggested by all dynamic spectra and implied by event 4. Magdalenic *et al.* (2008, 2010) found the heights of sources of metric type II bursts to be between 70

and 280 Mm; however, the apparent heights of limb sources in the metric range could be noticeably reduced due to refraction (see, *e.g.*, Zheleznyakov, 1970). The shock character of the waves is supported by the correspondence of their kinematics to the expected propagation of shock waves as well as the drift rates of type II bursts and drifting continua. The shock-wave nature of EUV waves is supported with probable reflections and coupling of two shock waves in event 3. Expansion of leading edges of CMEs produced in three events corresponded to propagation of the lower skirts of the shock fronts observed as Moreton/EUV waves. Thus, the wave excitation by an impulsive piston appears to match all the considered observations, basically corresponding to a picture proposed by Uchida (1974).

So far we did not relate a piston with a particular structure or its surface. Presumable pistons could be either an eruptive filament (EF) or a CME frontal structure (FS). Both expand as an entire ensemble in a completely formed CME; only its outer sheath can be a piston. This sheath is believed to be both the surface of contact discontinuity and the outer FS surface. Expansion of such an FS-piston determines propagation of an interplanetary piston-driven wave and the drag force affecting a CME. The situation is different during the early CME formation inside an active region, when EF moves faster than it would be adequate for a self-similar expansion of the whole CME. The EF acts here as an impulsive piston. The piston excites a wave inside a future CME. The wave freely propagates outwards as a shock wave. In the four events we revealed just this excitation scenario of waves, which resembled blast ones. Propagating upwards, such a wave inevitably would pass through the FS and appear ahead of it.

4.3. CME Components and Waves

4.3.1. Particularities of Expansion

Expansion of magnetoplasma constituents of the CME is different from kinematics of a wave traced, *e.g.*, with a leading edge of a plasma flow driven by a shock. The CME expansion is known to be about self-similar at moderate distances from the Sun. *The self-similar approach does not apply to early stages of expansion, when the structure and shape of a CME have not yet been established.* When an instability driving an eruption is over and drag from the solar wind is not yet significant, self-similar CME kinematics can be obtained from considerations of forces affecting a CME (Low, 1982; Uralov, Grechnev, and Hudson, 2005).

Expansion of magnetoplasma structures is governed by magnetic forces, plasma pressure, and gravity as long as the effect of the solar wind is small. With the polytropic index $\gamma \approx 4/3$ all the forces integrated over the boundary and volume of a CME scale with distance r by the same factor of r^{-2} . This leads to an expression for the CME velocity $V_{\text{CME}}^2 = V_0^2 + (V_\infty^2 - V_0^2)(1 - R_0/r)$, $V_{\text{CME}} = dr/dt$ (Grechnev *et al.*, 2008). Here R_0 is the initial size of self-similar expansion, V_0 the initial velocity at R_0 , and V_∞ the asymptotic velocity in infinity. At large distances acceleration $\propto r^{-2} \rightarrow 0$ and $V_{\text{CME}} \rightarrow V_\infty$. The expression for the CME velocity describes different types of kinematics. The situation $V_\infty \gg V_0 \sim 0$ appears to be typical. Event 1 showed a different behavior, $V_0 > V_\infty$, resembling an explosion with an impulsive acceleration followed by deceleration. A special type $V_0 \approx V_\infty$ (an impulsive acceleration is required to reach V_0) might correspond to some jet-like ejections, where magnetic reconnection destroys a structure of an eruption (Meshalkina *et al.*, 2009; Filippov, Golub, and Koutchmy, 2009; Liu *et al.*, 2011). Event 2 might have belonged to this type.

Since a FS starts to expand practically from a static equilibrium in a typical situation $V_\infty \gg V_0 \sim 0$, the FS-piston usually either accelerates or moves with a nearly constant

speed at the self-similar stage. By contrast, shock waves in all considered events decelerated. Hence, a typical FS-piston is expected to eventually approach the wave front. What does such a relation between the speeds of the shock front and piston mean? Do MHD equations allow a decelerating shock wave to run for a long time ahead of a non-decelerating FS-piston? We search answers in a theory developed by Low (1984) in solving a problem of self-similar expansion of a CME preceded by a strong shock wave. Though the problem was solved in a limit of very strong shock propagating in plasma with too steep density falloff $r^{-26/7}$, the solution correctly relates accelerations of the piston and piston-driven shock. Assuming a common linear profile of the plasma velocity in the whole region from the expansion center up to the shock front, it is possible to relate kinematics of the shock front and the contact discontinuity, *i.e.*, the FS-piston, without a complete solution of the problem. By fitting the motion of the piston with a function $r_{\text{pist}} = bt^m$, we express the sign of the shock acceleration a_{sh} vs. m : $a_{\text{sh}} \propto (\alpha m - 1)t^{\alpha m - 2}$ with $\alpha = (\gamma + 1)/2$. Thus, the conditions $a_{\text{sh}} < 0$ and $a_{\text{pist}} = d^2 r_{\text{pist}}/dt^2 > 0$ are incompatible. Such an FS-piston and the shock front expand in different ways, which cannot be coordinated with each other, unlike a bow shock. An impulsively excited freely propagating shock wave must eventually change to a piston-driven mode. Presumably this typically occurs at large distances, probably beyond the LASCO/C3 field of view. The transformation of a blast shock wave into a piston-driven one marks switch-on the aerodynamic drag and termination of the self-similar expansion regime. The drag force becomes significant, which means establishment of a continuous energy transport from the FS-piston to the shock wave. By contrast, a blast-like wave excited by an EF and running ahead of FS, which does not yet act as a piston, facilitates expansion of a CME into the solar wind. The shock wave forwards a part of its energy to the FS-piston, and the drag force is absent.

Most likely, real shock waves are neither purely blast waves nor purely piston ones. A shock front is sensitive to any events occurring behind it, *e.g.*, changes of the FS-piston speed, because the fast-mode speed behind the shock front is higher than its phase speed. To produce one more shock wave, an FS-piston has to repeat the maneuver, which produced the first shock. This is improbable when an instability driving an eruption has completed and a CME left the Sun.

4.3.2. Distinguishing Between Shock Signatures and CME Components

Sheeley, Hakala, and Wang (2000) and Vourlidas *et al.* (2003) considered distortions of coronal streamers as a morphological suggestion of presumable shocks. Indeed, moving wave-like kinks or deflections of coronal rays resemble an expected effect of a propagating shock wave. Some fast “CMEs” in difference images might be actually combinations of coronal rays deflected by shock waves. However, Filippov and Srivastava (2010) demonstrated that deflection of coronal rays could be due to expansion of a CME in magnetized corona without a shock. Irrespective of the particular type of possible shock, a more reliable morphological suggestion might be a spike-like leading feature due to deviation of a coronal ray by a wave. Magdalenic *et al.* (2008) showed such a situation in their Figure 4, where deflected coronal rays were visible well ahead of trailing CME structures.

We remind the reader that the conic bow-shock shape is not expected, at least, for wide super-Alfvénic CMEs. The shock front must cling to its foremost edge and closest flanks, while far flanks and a rear part can be constituted by a freely propagating shock front, so that the shape of the whole front would resemble an egg.

An attractive way to detect a shock front is to search for discontinuity in the density distribution shown by coronagraph images (Vourlidas *et al.*, 2003). However, this is model depen-

dent. Besides modeling the coronal density, one has to distinguish between the shock discontinuity and the contact surface separating the CME and environment. The three-dimensional contact surface should be also modeled. Thus, identifying a shock front in coronagraph images does not seem to be a simple task. Combinations of different indications seem to be useful. A non-structured faint density enhancement forming the envelope of a transient could be among them (Vourlidis *et al.*, 2003). Fast decelerating halo CMEs with such edges might be shock candidates. An effective shock indication might be such a halo edge crossing a distorted streamer. An important complement of morphological suggestions is kinematics of an expected shock wave and its correspondence to the drift of a type II burst. We also address in Paper III changes in shape of a shock front occurring in its propagation in the corona.

4.4. Presumable Scenario

Our observations and considerations suggest the following presumable scenario of a flare-related eruptive event. An eruption occurs due to a rapid development of an instability in a magnetic structure. An abruptly accelerating eruption destroys a pre-existing magnetic configuration, thus causing a flare, and produces an MHD disturbance as an impulsive piston. The disturbance appears at a height of ~ 50 Mm during the rise phase of an HXR/microwave burst, leaves the piston, rapidly steepens into a shock, and then freely propagates like a blast wave. Its lower trail might be observed as a decelerating Moreton wave as well as an EUV wave, and the wave dome is sometimes observed to expand above the limb.

The motion of the shock front shows up in radio spectra as a drifting continuum and, when the shock front reaches the current sheet of a coronal streamer, as a type II burst. For the fundamental emission this usually occurs at ~ 100 MHz ($r \sim 1.5R_{\odot}$). Metric type II bursts are expected to cease due to damping of shock waves that typically occurs above 20 MHz ($r < 3R_{\odot}$). Revival of a shock is possible at a few R_{\odot} due to decreasing Alfvén speed, and decametric/hectometric type II emission can appear. The complex piston-blast-piston transformations of shock waves traveling in the corona with significantly varying parameters and possible coupling of multiple shocks imply well-known disagreement between metric and interplanetary type II events (see, *e.g.*, Cane and Erickson, 2005).

Expanding shock fronts can form envelopes of CMEs. Measurements in the CME Catalog referring to a fastest feature might be related to shock waves for fast decelerating CMEs, especially halos. As a shock wave decelerates, a trailing mass must eventually approach its front. The shock becomes a piston-driven one presumably at distances $r > 20R_{\odot}$. The aerodynamic drag becomes important. This picture is consistent with results of several cited papers. The story of shock waves associated with flare-related CMEs appears to be more complex than often assumed, in fact combining different scenarios.

5. Concluding Remarks

Our seemingly simplified approach has resulted in surprisingly fine reconciliation of EUV waves, Moreton waves, metric type II bursts, and leading edges of CMEs. The first consequence is that independent of the quality of our approximation, all these phenomena are really manifestations of a common agent, *i.e.*, a traveling coronal shock wave excited by an eruption. Second, our approach indeed provides a promising instrument for analyses of slow-drifting bursts and their comparison with other eruption-related phenomena. The power-law approximation turns out to work well beyond conditions, for which it was derived. An results clarify relations between flares, traveling coronal shocks, CMEs, associated wave-like

manifestations, type II bursts, and provide a common quantitative description for some of these phenomena. An important by-product is an indication of the leading role of eruptions with respect to flares, *i.e.*, the acceleration of an eruption occurs almost independently of the flare reconnection rate.

Our approach and analysis needs elaboration and continuation. There remains a number of issues to be addressed. Low heights, at which type II emission sometimes appears, indicate that our consideration of its generation in the current sheet of a coronal streamer needs elaboration. Data sets similar to those analyzed in our paper should be compared with imaging observations in the metric range. The analysis of decimetric to metric drifting bursts should be extended to longer radio waves in conjunction with coronagraphic observations. Despite the success of our self-similar shock approximation, a more realistic weak shock approximation should be considered. The latter issue is a subject of our paper II.

Acknowledgements We thank A. Warmuth for data, which he made available to us, and M. Eselevich, E. Ivanov, E. Schmahl, M. Temmer, V. Eselevich, A. Altyntsev, G. Rudenko, L. Kashapova, V. Fainshtein, N. Prestage, S. Pohjolainen, S. White, A. Zhukov, and J. Magdalenic for fruitful discussions and cooperation. We gratefully remember Mukul Kundu who inspired a significant part of our study. We thank an anonymous referee for valuable remarks.

We thank the teams operating all instruments whose data are used in our study for their efforts and open data policies: the ESA & NASA EIT, LASCO, and MDI instruments on SOHO; TRACE and STEREO/SECCHI telescopes; the Mauna Loa Solar Observatory; the NOAA/SEC GOES satellites; the NICT HIRAS (Japan), the IPS Radio and Space Services Learmonth Observatory (Australia), and the USAF RSTN radio telescopes. We appreciatively use the CME catalog generated and maintained at the CDAW Data Center by NASA and the Catholic University of America in cooperation with the Naval Research Laboratory. This research was supported by the Russian Foundation of Basic Research under grant 09-02-00115.

References

- Afanasyev, A.N., Uralov, A.M.: 2011, *Solar Phys.* doi:[10.1007/s11207-011-9730-9](https://doi.org/10.1007/s11207-011-9730-9). this issue.
- Attrill, G.D.R.: 2010, *Astrophys. J.* **718**, 494.
- Biesecker, D.A., Myers, D.C., Thompson, B.J., Hammer, D.M., Vourlidas, A.: 2002, *Astrophys. J.* **569**, 1009.
- Brueckner, G.E., Howard, R.A., Koomen, M.J., Korendyke, C.M., Michels, D.J., Moses, J.D., *et al.*: 1995, *Solar Phys.* **162**, 357.
- Cane, H.V., Erickson, W.C.: 2005, *Astrophys. J.* **623**, 1180.
- Chen, P.F., Fang, C., Shibata, K.: 2005, *Astrophys. J.* **622**, 1202.
- Chertok, I.M., Grechnev, V.V.: 2005, *Solar Phys.* **229**, 95.
- Chertok, I.M., Grechnev, V.V., Uralov, A.M.: 2009, *Astron. Rep.* **53**, 355.
- Cliver, E.W., Nitta, N.V., Thompson, B.J., Zhang, J.: 2004, *Solar Phys.* **225**, 105.
- Cohen, O., Attrill, G.D.R., Manchester, W.B., Wills-Davey, M.J.: 2009, *Astrophys. J.* **705**, 587.
- Delaboudinière, J.-P., Artzner, G.E., Brunaud, J., Gabriel, A.H., Hochedez, J.F., Millier, F., *et al.*: 1995, *Solar Phys.* **162**, 291.
- Delannée, C.: 2000, *Astrophys. J.* **545**, 512.
- Filippov, B., Srivastava, A.K.: 2010, *Solar Phys.* **266**, 123.
- Filippov, B., Golub, L., Koutchmy, S.: 2009, *Solar Phys.* **254**, 259.
- Gallagher, P.T., Long, D.M.: 2010, *Space Sci. Rev.* doi:[10.1007/s11214-010-9710-7](https://doi.org/10.1007/s11214-010-9710-7).
- Gopalswamy, N., Yashiro, S., Temmer, M., Davila, J., Thompson, W.T., Jones, S., McAteer, R.T.J., Wuelser, J.-P., Freeland, S., Howard, R.A.: 2009, *Astrophys. J. Lett.* **691**, 123.
- Grechnev, V.V., Kuzin, S.V., Urnov, A.M., Zhitnik, I.A., Uralov, A.M., Bogachev, S.A., Livshits, M.A., Bugaenko, O.I., *et al.*: 2006a, *Solar Syst. Res.* **40**, 286.
- Grechnev, V.V., Uralov, A.M., Zandanov, V.G., Baranov, N.Y., Shibasaki, K.: 2006b, *Publ. Astron. Soc. Japan* **58**, 69.
- Grechnev, V.V., Uralov, A.M., Zandanov, V.G., Rudenko, G.V., Borovik, V.N., Grigorieva, I.Y., Slemzin, V.A., Bogachev, S.A., *et al.*: 2006c, *Publ. Astron. Soc. Japan* **58**, 55.
- Grechnev, V.V., Uralov, A.M., Slemzin, V.A., Chertok, I.M., Kuzmenko, I.V., Shibasaki, K.: 2008, *Solar Phys.* **253**, 263.

- Grechnev, V.V., Afanasyev, A.N., Uralov, A.M., Chertok, I.M., Eselevich, M.V., Eselevich, V.G., Rudenko, G.V., Kubo, Y.: 2011, *Solar Phys.* doi:[10.1007/s11207-011-9781-y](https://doi.org/10.1007/s11207-011-9781-y) this issue.
- Handy, B.N., Acton, L.W., Kankelborg, C.C., Wolfson, C.J., Akin, D.J., Bruner, M.E., Carvalho, R., Catura, R.C., et al.: 1999, *Solar Phys.* **187**, 229.
- Howard, R.A., Moses, J.D., Vourlidas, A., Newmark, J.S., Socker, D.G., Plunkett, S.P., Korendyke, C.M., Cook, J.W., et al.: 2008, *Space Sci. Rev.* **136**, 67.
- Hudson, H.S., Warmuth, A.: 2004, *Astrophys. J. Lett.* **614**, 85.
- Hudson, H.S., Khan, J.I., Lemen, J.R., Nitta, N.V., Uchida, Y.: 2003, *Solar Phys.* **212**, 121.
- Ichimoto, K., Sakurai, T., Flare Telescope, Norikura Teams: 1993, In: *Proc. 2nd Japan–China Seminar on Sol. Phys.* 151.
- Kaiser, M.L., Kucera, T.A., Davila, J.M., St. Cyr, O.C., Guhathakurta, M., Christian, E.: 2008, *Space Sci. Rev.* **136**, 5.
- Khan, J.I., Aurass, H.: 2002, *Astron. Astrophys.* **383**, 1018.
- Klassen, A., Aurass, H., Mann, G., Thompson, B.J.: 2000, *Astron. Astrophys. Suppl. Ser.* **141**, 357.
- Landau, L.D., Lifshitz, E.M.: 1987, *Fluid Mechanics*, 2nd edn., Pergamon, Oxford.
- Lin, R.P., Dennis, B.R., Hurford, G.J., Smith, D.M., Zehnder, A., Harvey, P.R., et al.: 2002, *Solar Phys.* **210**, 3.
- Liu, W., Berger, T.E., Title, A.M., Tarbell, T.D., Low, B.C.: 2011, *Astrophys. J.* **728**, article id. 103.
- Long, D.M., Gallagher, P.T., McAteer, R.T.J., Bloomfield, D.S.: 2008, *Astrophys. J. Lett.* **680**, L81.
- Low, B.C.: 1982, *Astrophys. J.* **254**, 796.
- Low, B.C.: 1984, *Astrophys. J.* **281**, 381.
- Magdalenic, J., Vršnak, B., Pohjolainen, S., Temmer, M., Aurass, H., Lehtinen, N.J.: 2008, *Solar Phys.* **253**, 305.
- Magdalenic, J., Marqué, C., Zhukov, A.N., Vršnak, B., Žic, T.: 2010, *Astrophys. J.* **718**, 266.
- Mancuso, S., Abbo, L.: 2004, *Astron. Astrophys.* **415**, L17.
- Mancuso, S., Raymond, J.C.: 2004, *Astron. Astrophys.* **413**, 363.
- Mann, G., Klassen, A., Aurass, H., Klassen, H.-T.: 2003, *Astron. Astrophys.* **400**, 329.
- Meshalkina, N.S., Uralov, A.M., Grechnev, V.V., Altyntsev, A.T., Kashapova, L.K.: 2009, *Publ. Astron. Soc. Japan* **61**, 791.
- Moreton, G.E.: 1960, *Astron. J.* **65**, 494.
- Nakajima, H., Sekiguchi, H., Sawa, M., Kai, K., Kawashima, S.: 1985, *Publ. Astron. Soc. Japan* **37**, 163.
- Newkirk, G. Jr.: 1961, *Astrophys. J.* **133**, 983.
- Pohjolainen, S., Hori, K., Sakurai, T.: 2008, *Solar Phys.* **253**, 291.
- Pomoell, J., Vainio, R., Kissmann, R.: 2008, *Solar Phys.* **253**, 249.
- Reiner, M.J., Vourlidas, A., St. Cyr, O.C., Burkepile, J.T., Howard, R.A., Kaiser, M.L., Prestage, N.P., Bougeret, J.-L.: 2003, *Astrophys. J.* **590**, 533.
- Rudenko, G.V.: 2001, *Solar Phys.* **198**, 5.
- Rudenko, G.V., Grechnev, V.V.: 1999, In: *Astronomical Data Analysis Software and Systems VIII CS-172*, Astron. Soc. Pac., San Francisco, 421.
- Saito, K.: 1970, *Ann. Tokyo Astron. Obs.* **12**, 53.
- Schmidt, J.M., Ofman, L.: 2010, *Astrophys. J.* **713**, 1008.
- Sheeley, N.R. Jr., Hakala, W.N., Wang, Y.-M.: 2000, *J. Geophys. Res.* **105**(A3), 5081.
- Temmer, M., Veronig, A.M., Vršnak, B., Rybák, J., Gömöry, J., Stoiser, S., Maričić, D.: 2008, *Astrophys. J. Lett.* **673**, 95.
- Thompson, B.J., Plunkett, S.P., Gurman, J.B., Newmark, J.S., St. Cyr, O.C., Michels, D.J.: 1998, *Geophys. Res. Lett.* **25**, 2465.
- Thompson, B.J., Gurman, J.B., Neupert, W.M., Newmark, J.S., Delaboudinière, J.-P., St. Cyr, O.C., Stezelberger, S., Dere, K.P.: 1999, *Astrophys. J. Lett.* **517**, L151.
- Thompson, B.J., Reynolds, B., Aurass, H., Gopalswamy, N., Gurman, J.B., Hudson, H.S., Martin, S.F., St. Cyr, O.C.: 2000, *Solar Phys.* **193**, 161.
- Torii, C., Tsukiji, Y., Kobayashi, S., Yoshimi, N., Tanaka, H., Enome, S.: 1979, *Proc. Res. Inst. Atmos. Nagoya Univ.* **26**, 129.
- Uchida, Y.: 1968, *Solar Phys.* **4**, 30.
- Uchida, Y.: 1974, *Solar Phys.* **39**, 431.
- Uralov, A.M., Grechnev, V.V., Hudson, H.S.: 2005, *J. Geophys. Res.* **110**, A05104.
- Uralova, S.V., Uralov, A.M.: 1994, *Solar Phys.* **152**, 457.
- Veronig, A.M., Temmer, M., Vršnak, B.: 2008, *Astrophys. J. Lett.* **681**, L113.
- Veronig, A.M., Muhr, N., Kienreich, I.W., Temmer, M., Vršnak, B.: 2010, *Astrophys. J. Lett.* **716**, L57.
- Vourlidas, A., Wu, S.T., Wang, A.H., Subramanian, P., Howard, R.A.: 2003, *Astrophys. J.* **598**, 1392.
- Vršnak, B., Cliver, E.W.: 2008, *Solar Phys.* **253**, 215.
- Vršnak, B., Aurass, H., Magdalenic, J., Gopalswamy, N.: 2001, *Astron. Astrophys.* **377**, 321.

- Wang, Y., Zhang, J., Shen, C.: 2009, *J. Geophys. Res.* **114**, 10104.
- Warmuth, A.: 2007, In: *Lecture Notes in Physics* **725**, Springer, Berlin, 107.
- Warmuth, A.: 2010, *Adv. Space Res.* **45**, 527.
- Warmuth, A., Vršnak, B., Aurass, H., Hanslmeier, A.: 2001, *Astrophys. J. Lett.* **560**, L105.
- Warmuth, A., Vršnak, B., Magdalenic, J., Hanslmeier, A., Otruba, W.: 2004a, *Astron. Astrophys.* **418**, 1101.
- Warmuth, A., Vršnak, B., Magdalenic, J., Hanslmeier, A., Otruba, W.: 2004b, *Astron. Astrophys.* **418**, 1117.
- Wills-Davey, M.J., Attrill, G.D.R.: 2009, *Space Sci. Rev.* **149**, 325.
- Wills-Davey, M.J., DeForest, C.E., Stenflo, J.O.: 2007, *Astrophys. J.* **664**, 556.
- White, S.M., Thompson, B.J.: 2005, *Astrophys. J. Lett.* **620**, L63.
- Yang, H.Q., Chen, P.F.: 2010, *Solar Phys.* **266**, 59.
- Yashiro, S., Gopalswamy, N., Michalek, G., St. Cyr, O.C., Plunkett, S.P., Rich, N.B., Howard, R.A.: 2004, *J. Geophys. Res.* **109**, A07105.
- Zheleznyakov, V.V.: 1970, *Radio Emission of the Sun and the Planets*, Pergamon, Oxford.
- Zhukov, A.N., Auchère, F.: 2004, *Astron. Astrophys.* **427**, 705.
- Zhukov, A.N., Rodriguez, L., de Patoul, J.: 2009, *Solar Phys.* **259**, 73.